

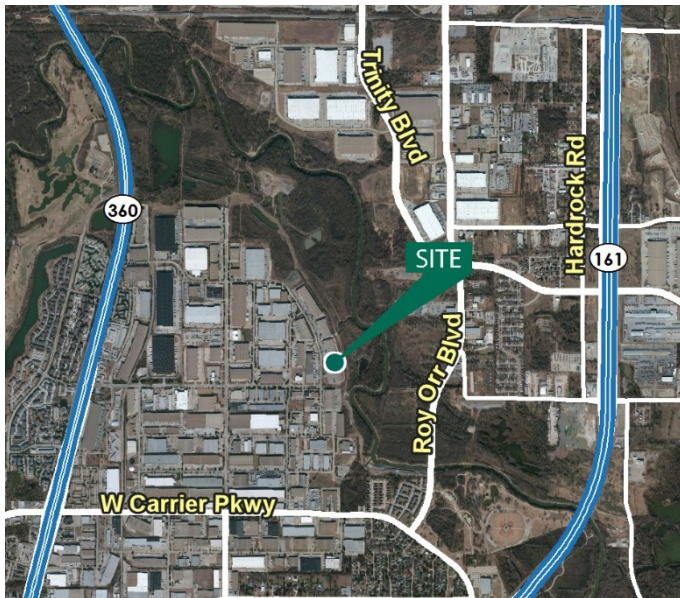
146,748 SF

Industrial Space For Lease



Prologis Great Southwest

2750 114th Street, Suite 100
Grand Prairie, Texas 75050 USA



LOCATION

- Situated in the highly desirable North Great Southwest industrial submarket
- Excellent access to major highways SH-360, SH-183 and SH-161

FACILITY

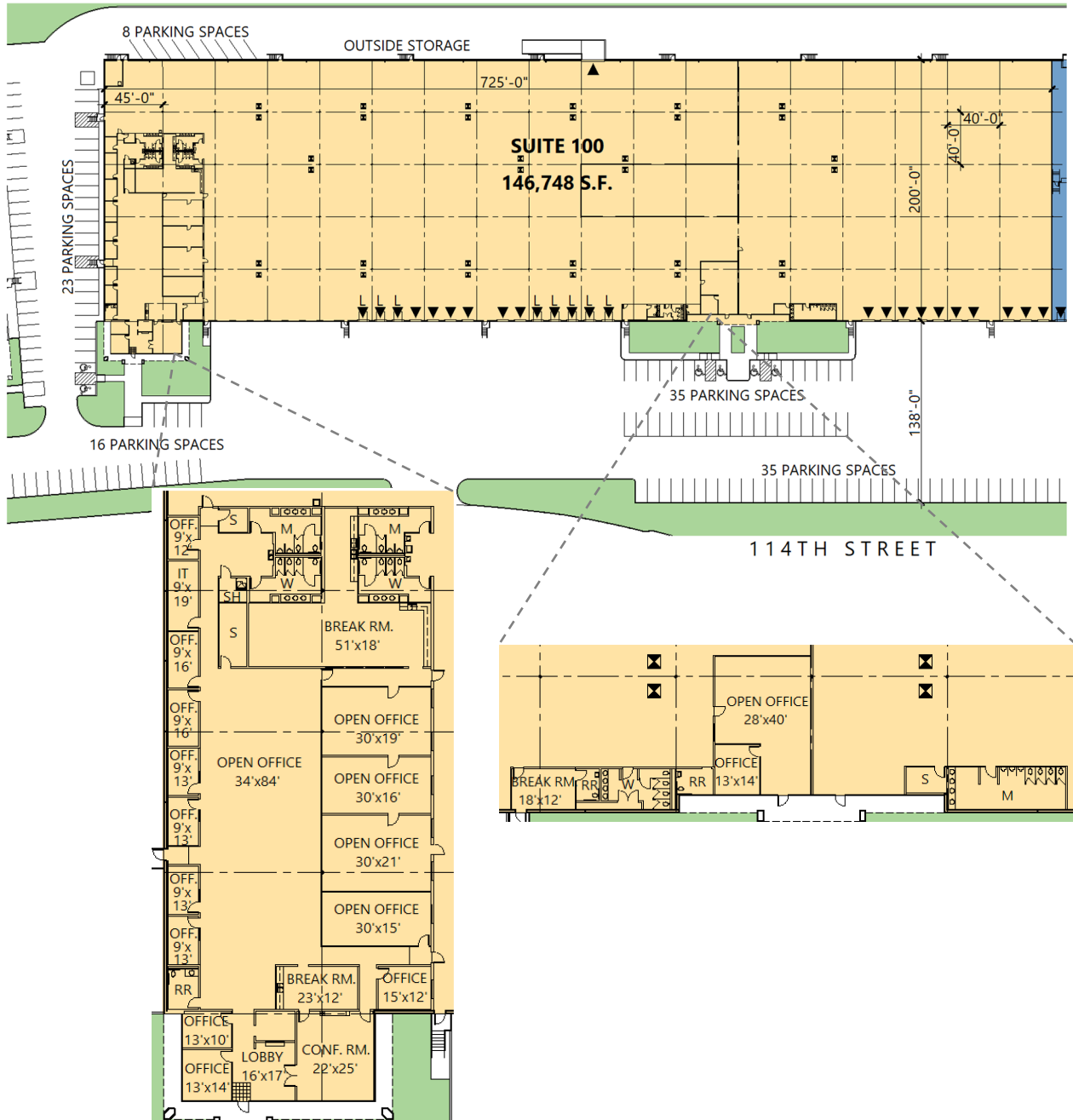
- 146,748 sf available
- 12,357 sf office
- 4,840 sf warehouse work room
- 28' clear height
- 40' x 40' typical bay spacing
- 24 (9' x 10') overhead dock doors, 8 with levelers
- 1 (18'x10') drive in dock door
- ESFR sprinkler system

ADVANTAGES AND AMENITIES

- End cap space
- 99K+ HVAC warehouse space (±2006 installation)
- Outside storage available

146,748 SF

Industrial Space For Lease



Lee & Associates

Mark Graybill, SIOR, CCIM
 mgraybill@lee-associates.com
 ph +1 972 934 4007
 cell +1 214 914 5537
 14950 Quorum Drive
 Suite 100
 Dallas, TX 75254 USA

Lee & Associates

Reed Parker, SIOR
 rparker@lee-associates.com
 ph +1 972 934 4020
 cell +1 214 558 5558
 14950 Quorum Drive
 Suite 100
 Dallas, TX 75254 USA

Prologis

Ryan McNaughton
 rmcnaughton@prologis.com
 ph +1 972 884 9218
 cell +1 214 673 9489
 2021 McKinney Avenue
 Suite 1050
 Dallas, TX 75201 USA