

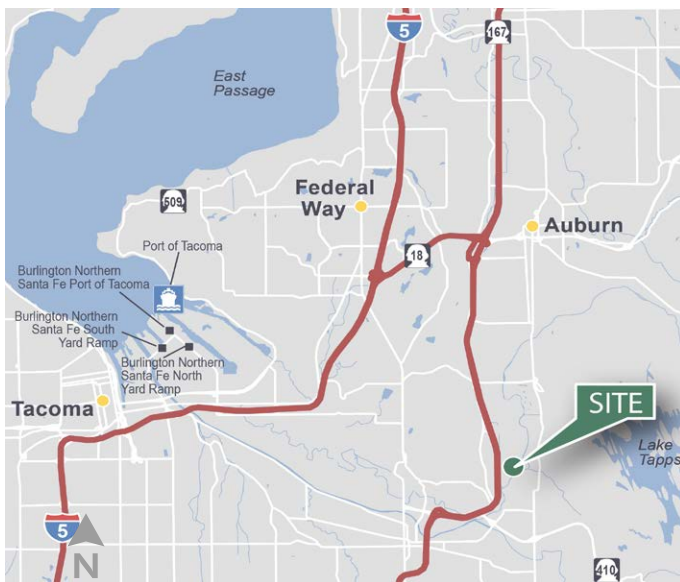
6,240 SF

Industrial Space For Lease



Prologis Park Sumner

3104 142nd Avenue East, Suite 100
Sumner, Washington 98134



LOCATION

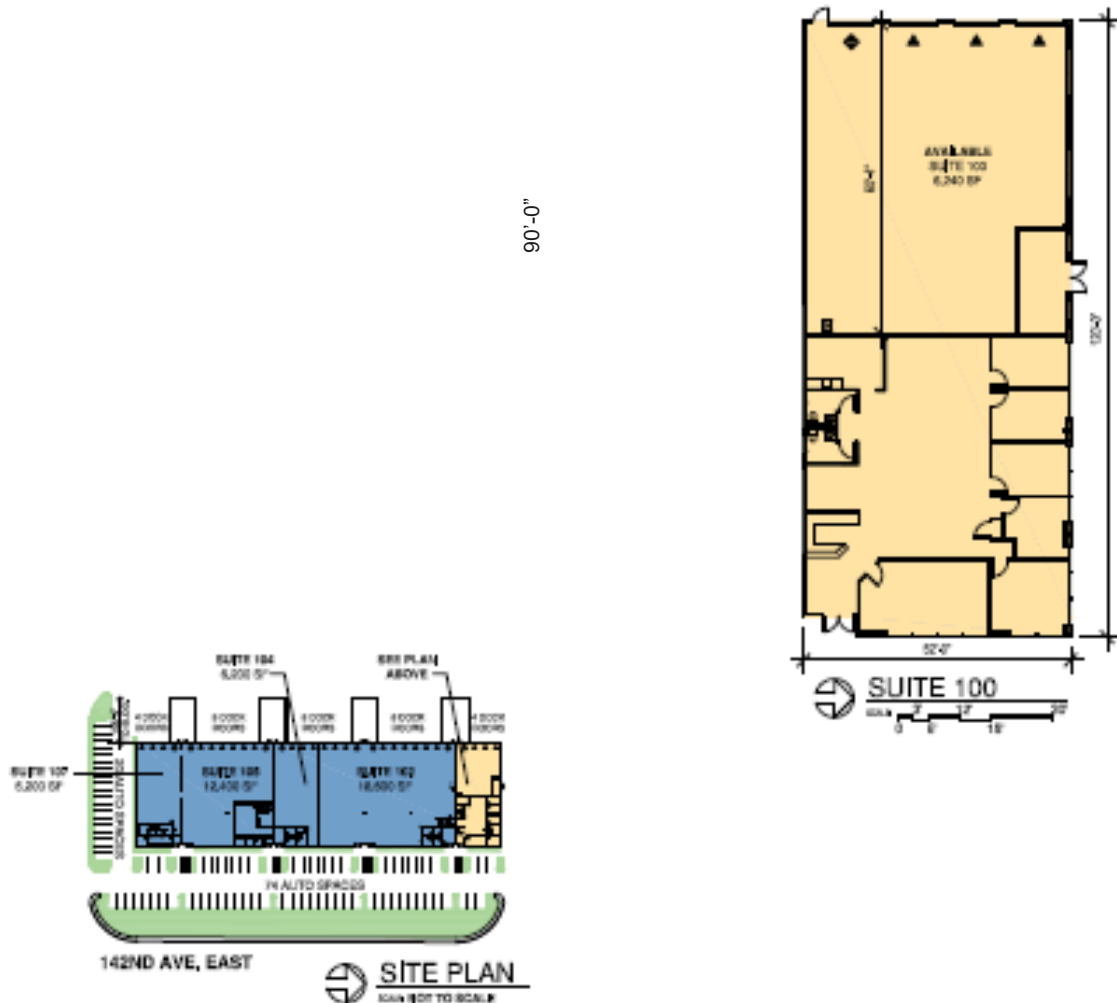
- Located in Prologis Park Sumner
- Approximately only 12 miles from the Port of Tacoma
- Direct access to SR-167 via 24th Street
- Visibility to 142nd Street

FACILITY

- 6,240 SF Total available
- Includes 3,000 SF Office
- 3 Dock high doors
- 1 Grade level door
- 24' Clear height
- End cap space
- Corporate image
- Available 30 days' notice

6,240 SF

Industrial Space For Lease



CBRE

CBRE, Inc.

John Sullivan

john.sullivan@cbre.com

ph +1 206 442 2744

cell +1 206 719 2902

1420 5th Ave, Ste 1700

Seattle, WA 98101

CBRE, Inc.

John Gilliland

john.gilliland@cbre.com

ph +1 206 442 2745

cell +1 206 226 7930

1420 5th Ave, Ste 1700

Seattle, WA 98101

Prologis

Mark Roddy

mroddy@prologis.com

ph +1 206 414 7617

dir +1 253 514 0299

12720 Gateway Drive, Ste 110

Tukwila, WA 98168

No warranty or representation, expressed or implied, is made as to the accuracy of the information contained herein, and same is submitted subject to error and omissions.

www.prologis.com www.cbre.us

© 2021 CBRE, Inc. All rights reserved. This information has been obtained from sources believed reliable, but has not been verified for accuracy or completeness. You should conduct a careful, independent investigation of the property and verify all information. Any reliance on this information is solely at your own risk. CBRE and the CBRE logo are service marks of CBRE, Inc. All other marks displayed on this document are the property of their respective owners. Photos herein are the property of their respective owners. Use of these images without the express written consent of the owner is prohibited. ar07621