

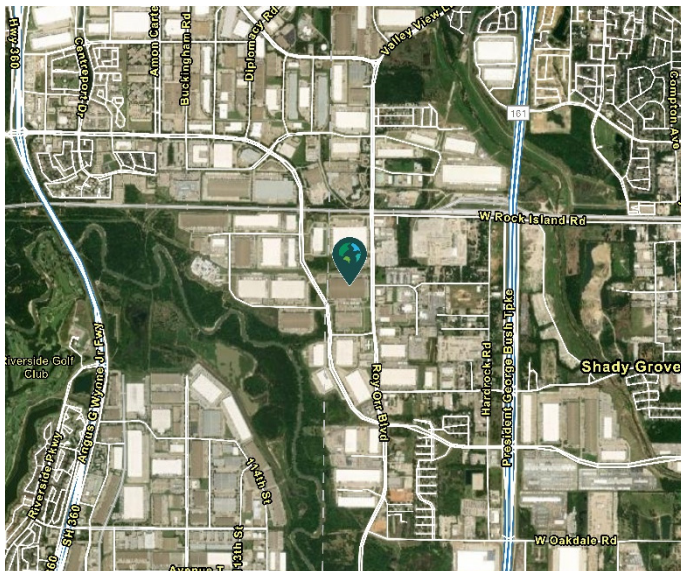
# 507,984 SF

## Industrial Space For Lease



## Prologis Great Southwest

3450 Roy Orr Boulevard  
Grand Prairie, TX 75050 USA



### LOCATION

- In the heart of the North Great Southwest Industrial submarket with easy access to SH 360, I-30 and TX-161

### FACILITY

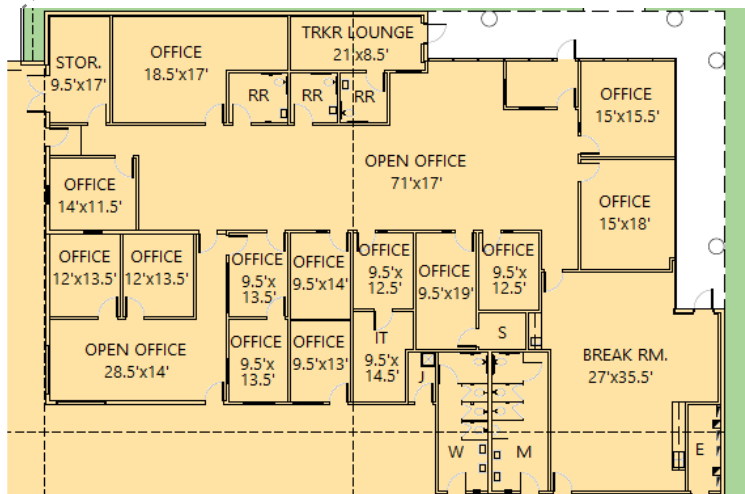
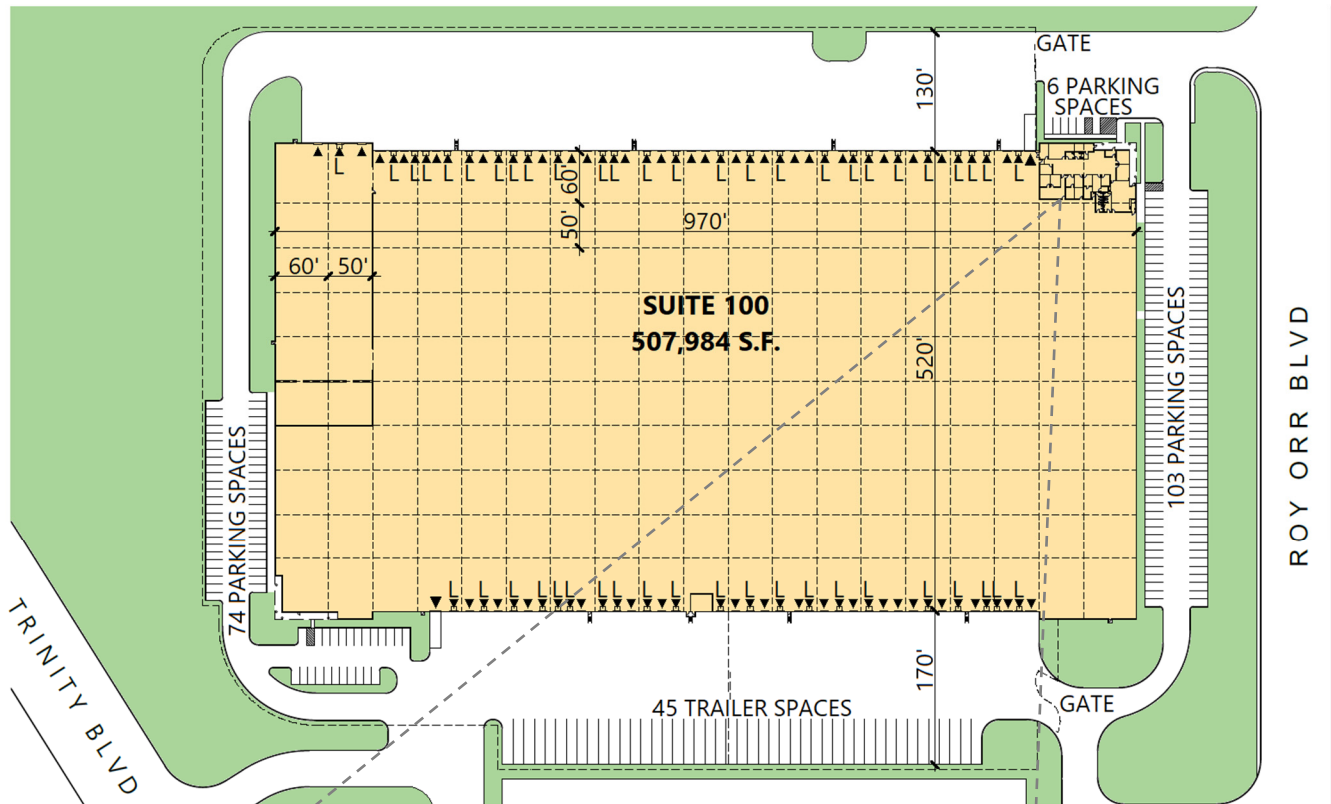
- 507,984 sf available
- 6,962 sf office
- 5,537 sf a/c warehouse
- 30' clear height
- Cross-dock configuration
- 83 (9'x10') dock doors, 47 with levelers
- 2 (12'x14') dock doors
- 2 (12'x14') dock doors with ramp
- 183 auto parking spaces
- ESFR sprinkler system

### ADVANTAGES AND AMENITIES

- 45 trailer spaces
- Secured truck court

# 507,984 SF

## Industrial Space For Lease



### Lee & Associates

Trey Fricke, SIOR  
tfricke@lee-associates.com  
ph +1 972 934 4010  
cell +1 817 991 1800  
14950 Quorum Drive  
Suite 100  
Dallas, TX 75254 USA

### Lee & Associates

Reid Bassinger, SIOR  
rbassinger@lee-associates.com  
ph +1 972 934 4013  
cell +1 214 208 3194  
14950 Quorum Drive  
Suite 100  
Dallas, TX 75254 USA

### Prologis

Ryan McNaughton  
rmcnaughton@prologis.com  
ph +1 972 884 9218  
cell +1 214 673 9489  
2021 McKinney Avenue  
Suite 1050  
Dallas, TX 75201 USA