

# 19,200 SF

Industrial Space For Lease



## Prologis NW Corporate Park



3529 NW Yeon Avenue - Bldg 5  
Portland, OR 97210 USA

### LOCATION

- Guilds Lake / NW Industrial Area
- Eleven (11) Buildings; 887,935 SF Park

### FACILITY

- Approximately 19,200 SF with 1,798 SF Office
- Three (3) Dock-High Doors with LL
- One (1) Grade-Level Door
- Fully Sprinklered
- 24' Clear Height

### ADVANTAGES AND AMENITIES

- Close-In NW Location
- Minutes to Downtown Portland
- Immediate Access to I-405 and I-5
- Park Amenities Include Food and Convenience Services
- Please Call Brokers for Current Rates

Your single-source service for efficient move-in and operations: [prologisessentials.com](https://www.prologisessentials.com)

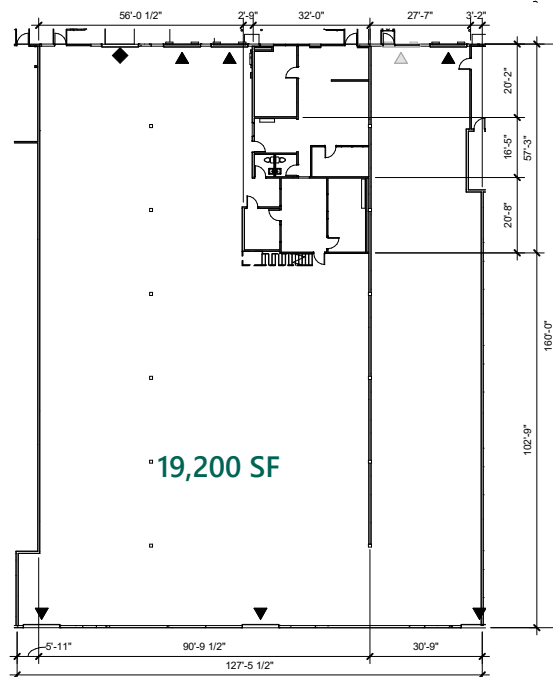
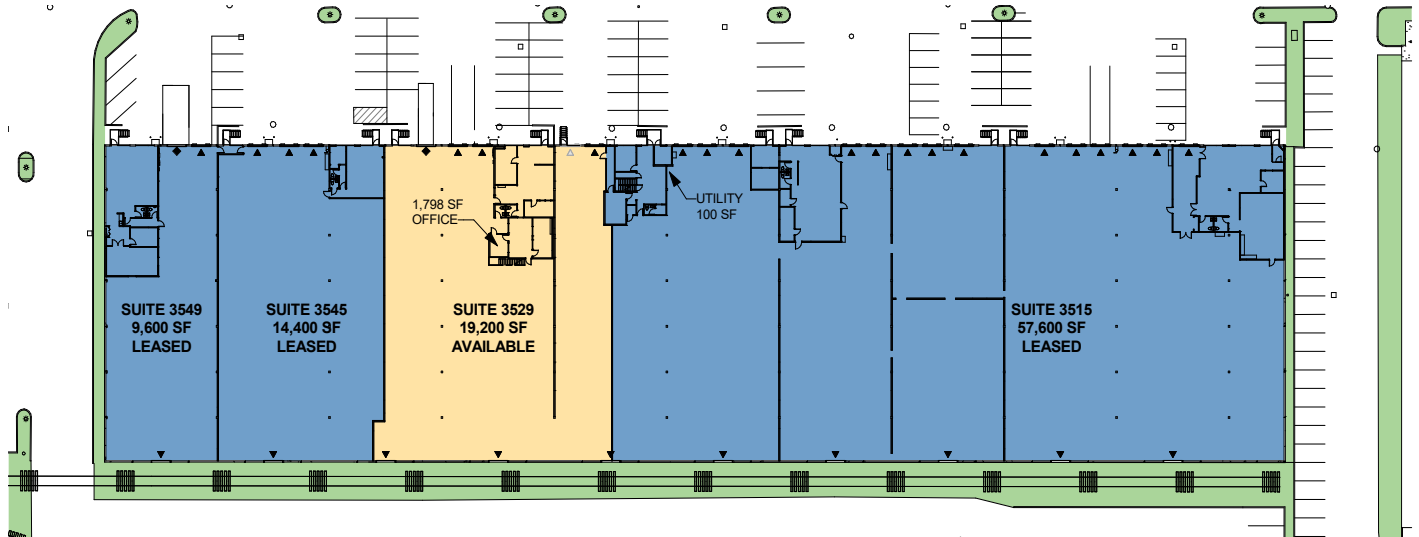


# 19,200 SF

Industrial Space For Lease



## Prologis NW Corporate Park



Capacity Commercial Group  
Scott Kappes, SIOR  
scottk@capacitycommercial.com  
ph +1 503 517 9877  
cell +1 503 816 4201  
805 SW Broadway Street,  
Suite 600,  
Portland, OR 97205 USA

Capacity Commercial Group  
Kenny Houser, SIOR  
kenny@capacitycommercial.com  
ph +1 503 517 9875  
cell +1 503 385 6080  
805 SW Broadway Street,  
Suite 600,  
Portland, OR 97205 USA

Prologis  
Sean Colletta  
scolletta@prologis.com  
ph +1 503 276 7375  
4380 SW Macadam Avenue,  
Suite 285,  
Portland, OR 97239 USA