

NORTHWEST CORPORATE PARK





PORTLAND, OR

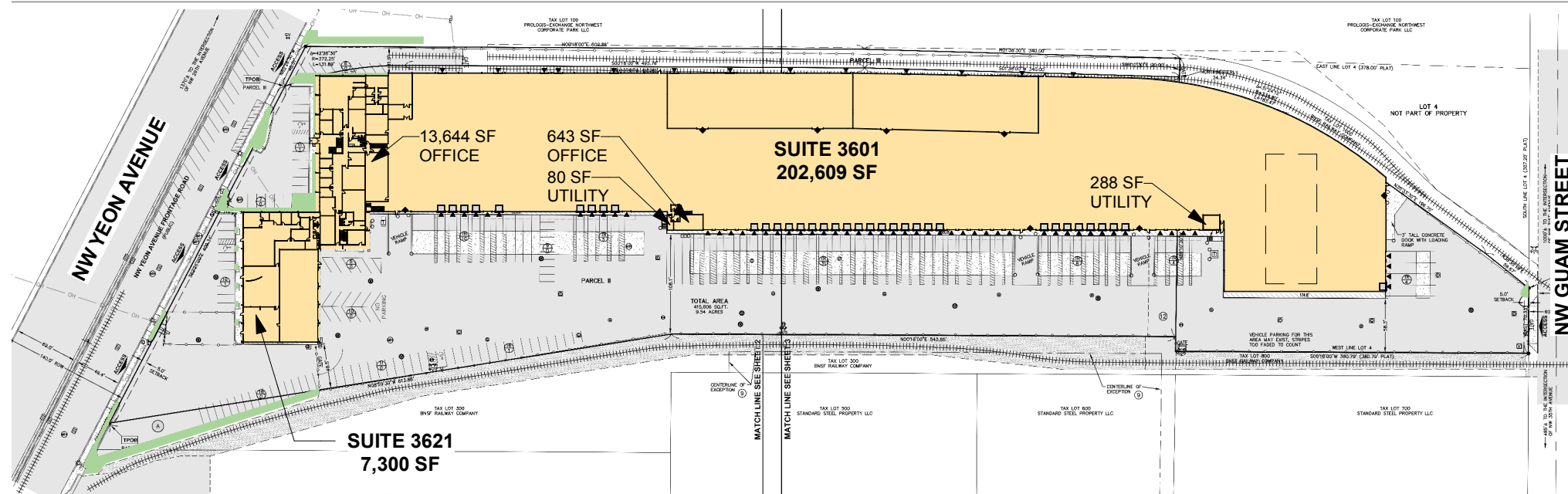
BUILDING 11

BUILDING FOOTPRINT:	209,909 SF
1ST FLOOR OFFICE AREA:	21,587 SF
2ND FLOOR OFFICE AREA:	13,684 SF
TOTAL OFFICE AREA:	35,271 SF

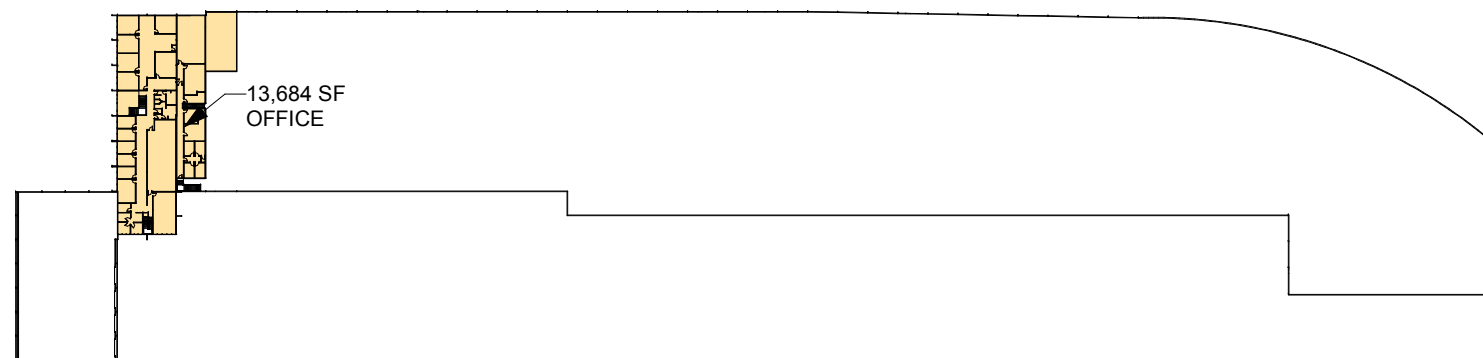
DOCK DOORS:	54
DRIVE IN DOORS:	8

LEGEND

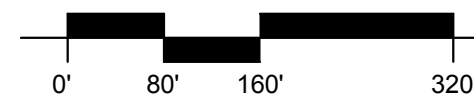
-  DRIVE IN DOOR
-  DOCK DOOR
-  LAND
-  BUILDING



GROUND FLOOR



SECOND FLOOR



4380 SW Macadam Ave, Suite 285,
 Portland, Oregon 97239
 Telephone: (503) 276.7373
 Facsimile: (503) 276.7372

