

12,000 SF

Industrial Space For Lease



Prologis Atlanta South



760 Atlanta South Parkway, Suite 250
College Park, GA 30349 USA

LOCATION

- Immediate access to Hartsfield-Jackson International Airport
- Convenient access to I-75 (< 1 mi.), I-285 (1.9 mi.) and I-85 (4.6 mi.)
- Connectivity to public transportation
- Clayton County Tier 1 Tax Incentives

FACILITY

- 68,712 SF building
- 12,000 SF available
 - 2,987 SF office
- 20' minimum clear height
- Four (4) dock doors; two (2) with levelers
- One (1) drive-in door
- Rear load configuration
- 40' x 50' column spacing
- LED office and warehouse lighting
- Power: 120/208 V, 200 amps

ADVANTAGES AND AMENITIES

- Access to the Prologis Essentials platform, which includes:
 - [Operations Essentials](#)
 - [Energy Essentials](#)
 - [Workforce Essentials](#)
 - [Mobility Essentials](#)



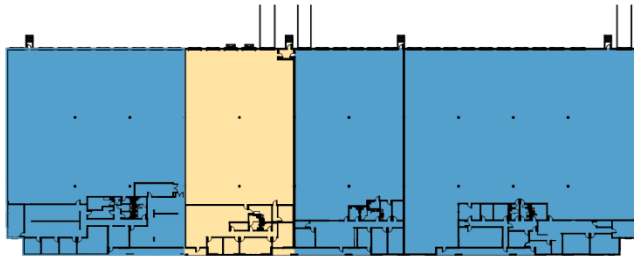
Prologis Essentials: your single-source service for efficient move-in and operations at prologisessentials.com

12,000 SF

Industrial Space For Lease



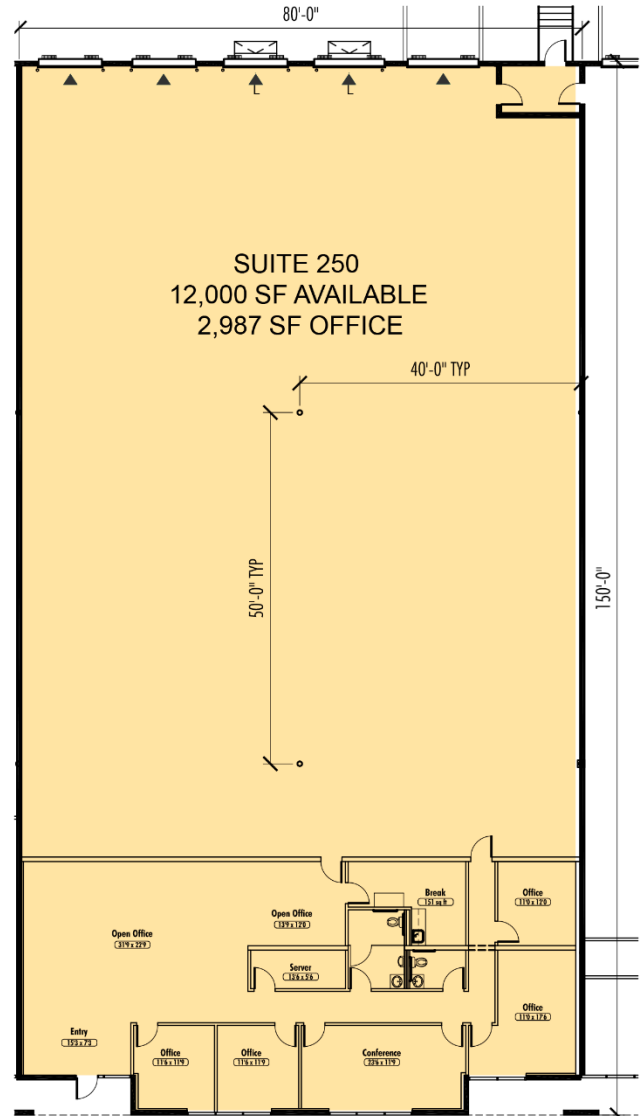
Prologis Atlanta South



KEY PLAN

LEGEND:

- ▲ DOCK DOOR
- ▲ L DOCK DOOR W/LEVELER
- ◆ DRIVE-IN DOOR
- ▲ G ON-GRADE DOOR
- ▭ EDGE OF DOCK LEVELER
- ▭ PIT LEVELER
- LAND
- LEASED AREA
- VACANT AREA



Reliant

Alex McArthur

amcarthur@reliant-re.com
ph +1 404 760 7420
cell +1 404 405 0290
3490 Piedmont Road NE
Suite 1025
Atlanta, GA 30305 USA

Reliant

Mike Weinberger

mweinberger@reliant-re.com
ph +1 404 760 7183
cell +1 770 891 7235
3490 Piedmont Road NE
Suite 1025
Atlanta, GA 30305 USA

Reliant

Drew Venable

dvenable@reliant-re.com
ph +1 404 760 7186
cell +1 229 392 8745
3490 Piedmont Road NE
Suite 1025
Atlanta, GA 30305 USA

Prologis

Sarah Stafford

sstafford@prologis.com
ph +1 404 760 7214
cell +1 404 561 8378
3475 Piedmont Road NE
Suite 650
Atlanta, GA 30305 USA

Prologis Essentials: your single-source service for efficient move-in and operations at prologisessentials.com

No warranty or representation, expressed or implied, is made as to the accuracy of the information contained herein, and same is submitted subject to error and omissions.