

±37,266 SF

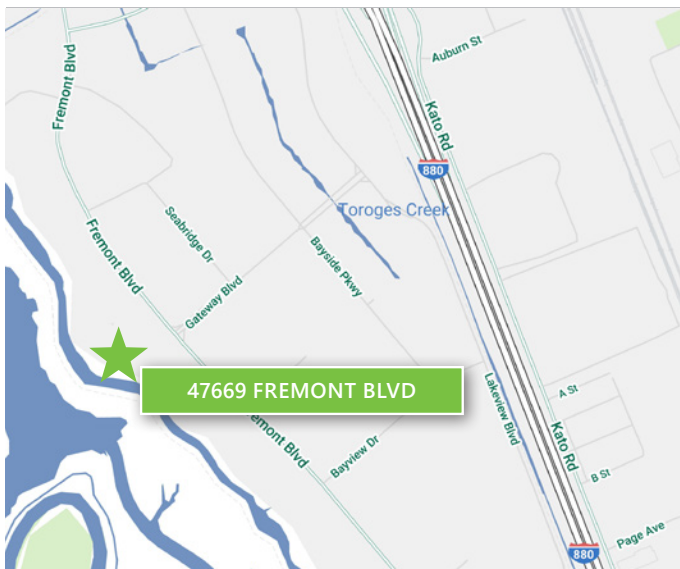


Life Science/Medical Device R&D Space For Lease



Prologis Park Bayside

47669 Fremont Blvd
Fremont, CA 94538



LOCATION

- Situated in the desirable Bayside area of Fremont
- Easy access to I-880, I-680, and Hwy 237
- Minutes from new Warm Springs BART station

FACILITY

- Existing Labs for Life Science/Medical Device Uses
- ±37,266 SF
- Dock & Grade Level Loading
- Significant Glassline & Impressive Entry
- 1,200 Amps @ 277/480V

ADVANTAGES AND AMENITIES

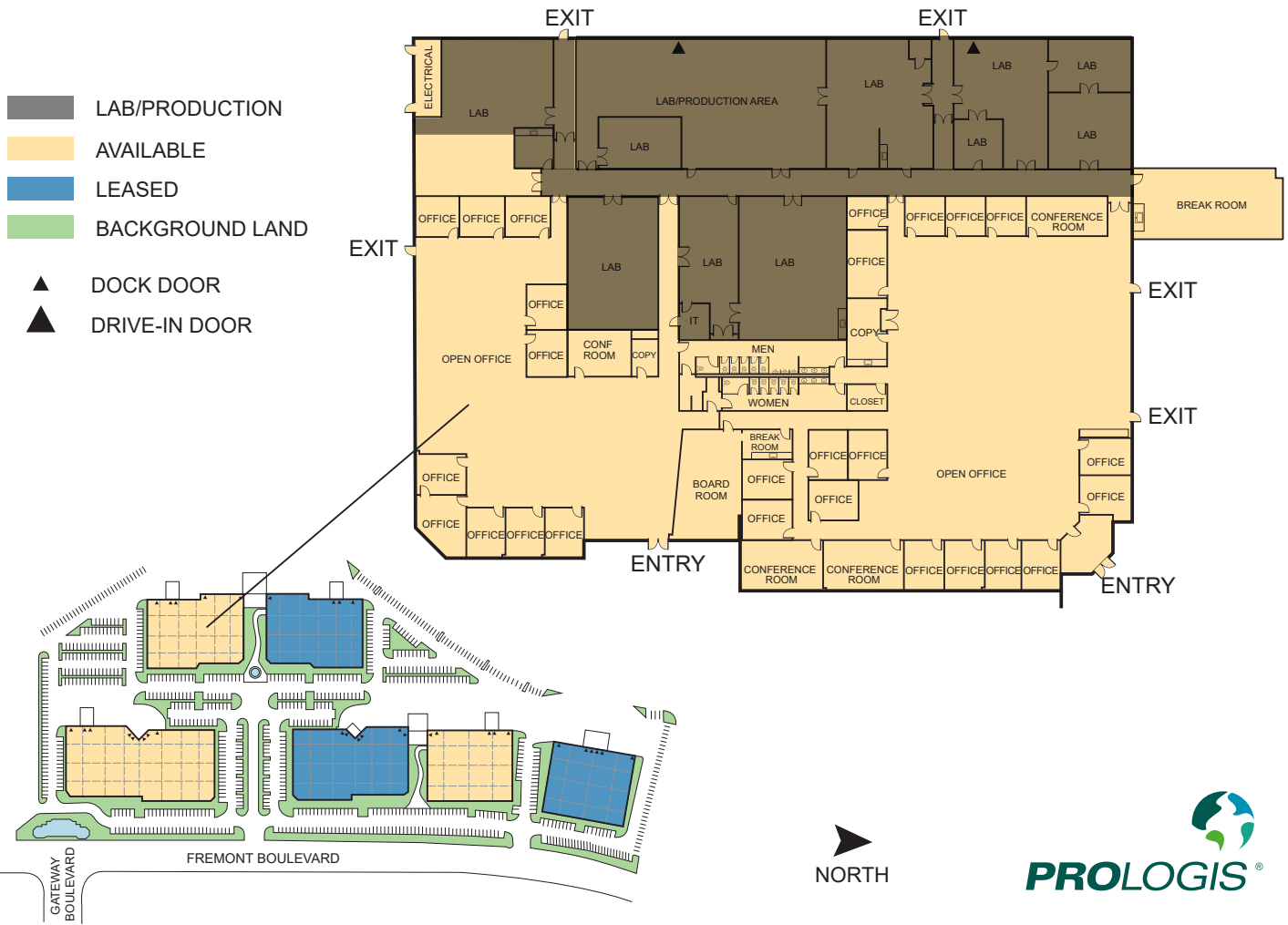
- New park amenities in place with additional amenities on the horizon
- Expansion opportunities available within the 1.3M SF park.

±37,266 SF



Life Science/Medical Device R&D Space For Lease

47669 FREMONT BOULEVARD



NOT TO SCALE

www.prologis.com www.cbre.us

±37,266 SF



Life Science/Medical Device R&D Space For Lease

Amenities Map



±37,266 SF



Life Science/Medical Device R&D Space For Lease



FOR MORE INFORMATION PLEASE CONTACT:

Thomas Taylor
Executive Vice President
Lic. 00944083
thomas.taylor@cbre.com
ph +1 408 453 7417

Sherman Chan
Senior Vice President
Lic. 01046769
sherman.chan@cbre.com
ph +1 408 453 7488

Vince Machado
Executive Vice President
Lic. 01317553
vince.machado@cbre.com
ph +1 408 453 7411

Matthew Taylor
Senior Vice President
Lic. 01897355
matthew.taylor@cbre.com
ph +1 408 453 7469



www.prologis.com www.cbre.us

© 2020 CBRE, Inc. All rights reserved. This information has been obtained from sources believed reliable, but has not been verified for accuracy or completeness. You should conduct a careful, independent investigation of the property and verify all information. Any reliance on this information is solely at your own risk. CBRE and the CBRE logo are service marks of CBRE, Inc. All other marks displayed on this document are the property of their respective owners. Photos herein are the property of their respective owners. Use of these images without the express written consent of the owner is prohibited.