

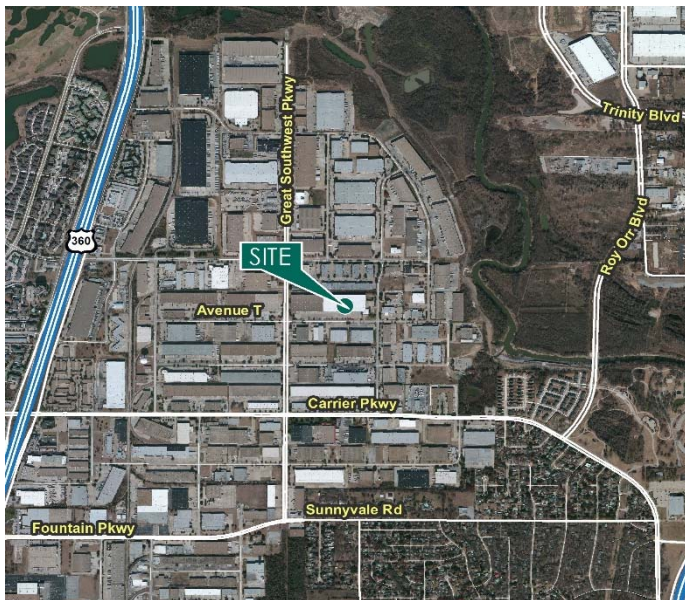
210,000 SF

Industrial Space For Lease



Prologis Great Southwest

1301 Avenue T
Grand Prairie, TX 75050 USA



LOCATION

- Easy access to SH 360, I-30 and TX 161
- Located at the intersection of Avenue T and Great Southwest Parkway in the heart of the North Great Southwest industrial submarket

FACILITY

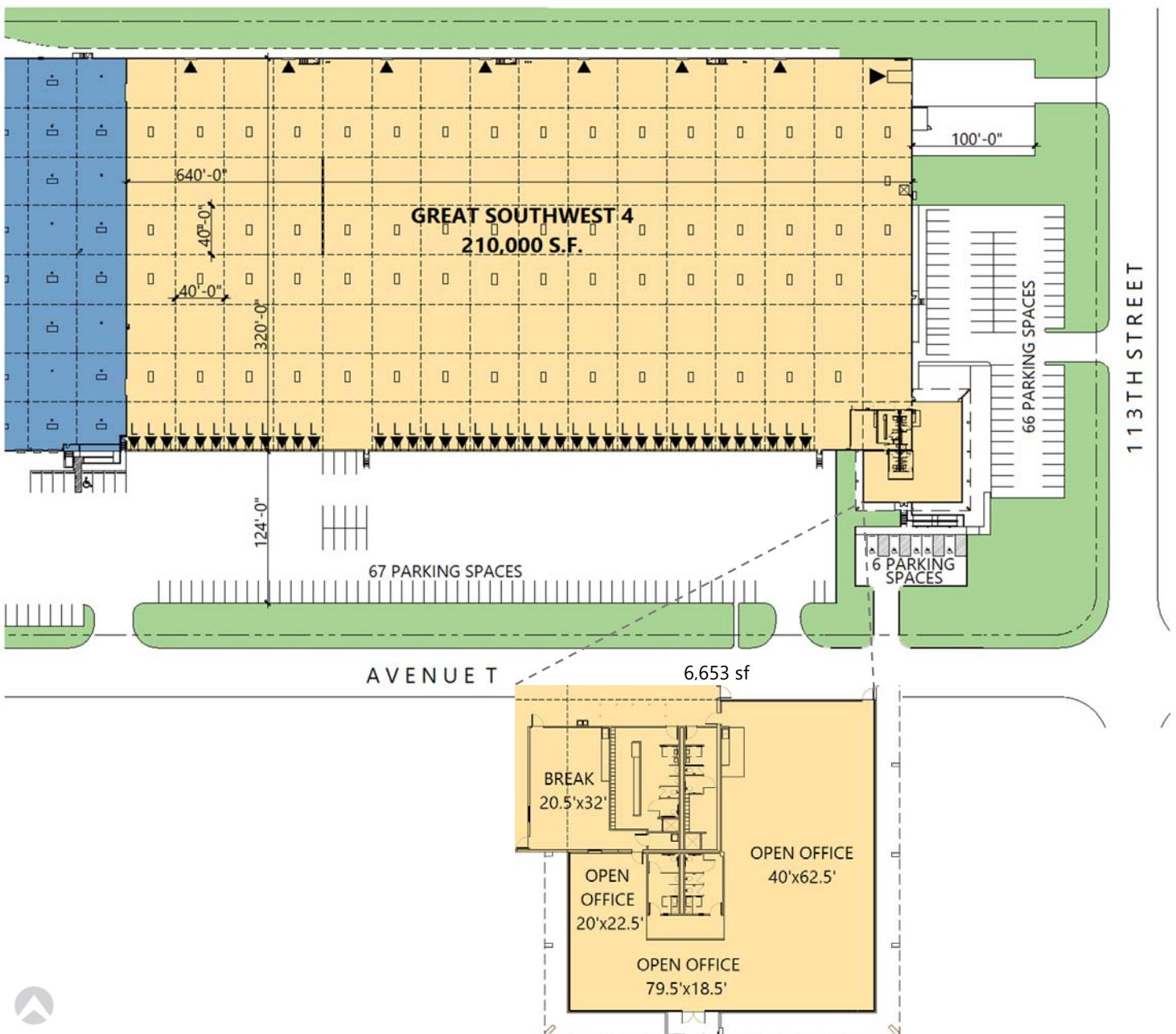
- 210,000 sf available
- 6,653 sf office
- 30' clear height
- 39 (9' x 10') dock doors with levelers
- 1 (10'x14') drive-in door with ramp
- 7 (10'x10') rail doors
- 139 auto parking spaces
- Class IV sprinkler system (Density: 0.45 over 3,000 sf)
- Power: 1,600 amps, 277/480V
500kVA Transformer

ADVANTAGES AND AMENITIES

- Potentially rail served
- LED lighting (30 F.C. @ 36" AFF w. 15' whips)

210,000 SF

Industrial Space For Lease



CBRE

Steve Koldyke

steve.koldyke@cbre.com
ph +1 214 979 6381
cell +1 214 850 4963
2100 McKinney Avenue
Suite 700
Dallas, TX 75201 USA

CBRE

Brian Gilchrist

brian.gilchrist@cbre.com
ph +1 214 979 6394
cell +1 817 907 1774
2100 McKinney Avenue
Suite 700
Dallas, TX 75201 USA

Prologis

Ryan McNaughton

rmcnaughton@prologis.com
ph +1 972 884 9218
cell +1 214 673 9489
2021 McKinney Avenue
Suite 1050
Dallas, TX 75201 USA