

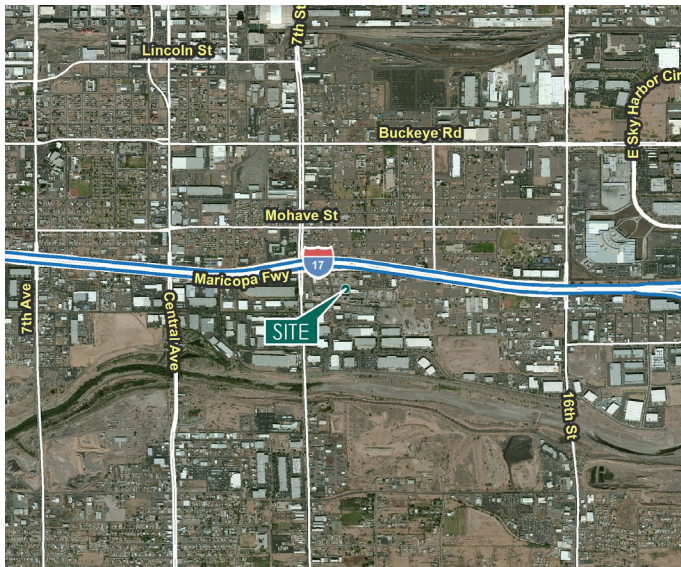
±57,892 SF

Industrial Space For Lease



Prologis I-17 Logistics Center 1

2111 S. 7th Street, Suite 100
Phoenix, AZ 85034 USA



LOCATION

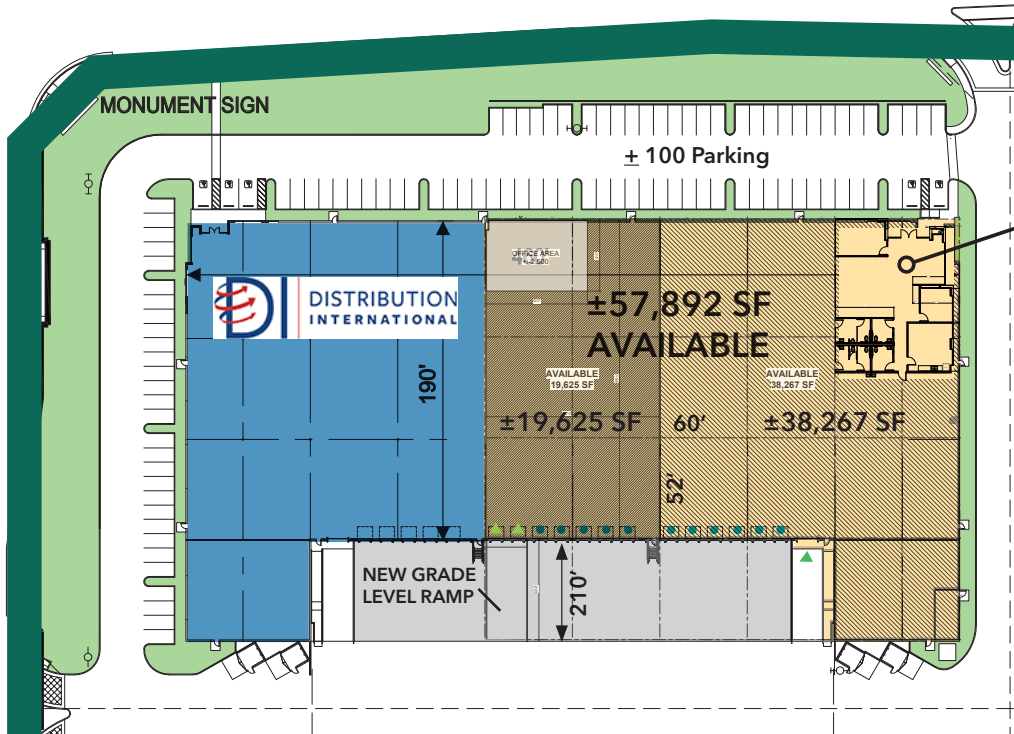
- 7 minutes to Sky Harbor International Airport
- 9 points of ingress/egress
- Freeway frontage
- I-17 traffic count: 125,000 VPD
- A-2 Zoning, City of Phoenix

FACILITY

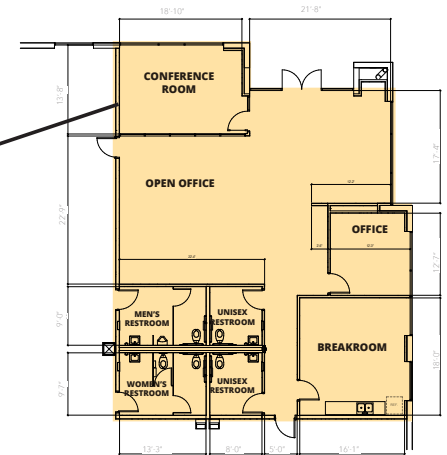
- ±96,048 SF building
- ±57,892 SF available (Divisible to ±19,625 SF)
- ±2,374 SF spec suite
- 32' minimum clear height
- 11 dock-high doors
- 3 grade level doors
- ESFR sprinkler system
- 210' truck court depth
- 2,000 amps, 277/480 volt
- 52' x 60' typical column spacing
- Parking ratio: 1.1:1,000 SF

±57,892 SF

Industrial Space For Lease



- Dock high door
- ▲ Grade level door



Lee & Associates
Ken McQueen
 kmcqueen@leearizona.com
 ph +1 602 474 9564
 cell +1 602 920 6042

Lee & Associates
Stein Koss, SIOR
 skoss@leearizona.com
 ph +1 602 912 3520
 cell +1 602 510 1999

Lee & Associates
Chris McClurg, SIOR
 cmclurg@leearizona.com
 ph +1 602 954 3766
 cell +1 602 741 2665

Lee & Associates
Tom Louer, SIOR
 tlouer@leearizona.com
 ph +1 602 954 3779
 cell +1 602 684 6909



Prologis
Jeff Foster
 VP, Market Officer
 jfoster@prologis.com
 ph +1 602 474 8383
 cell +1 480 280 4919
 2525 E Camelback Rd
 Suite 400
 Phoenix, AZ 85016 USA

Prologis
Alicia Hardwick
 Leasing Manager
 ahardwick@prologis.com
 ph +1 602 474 8364
 cell +1 602 284 3435
 2525 E Camelback Rd
 Suite 400
 Phoenix, AZ 85016 USA