

16,800 SF



Prologis NW Corporate Park



3461 NW Yeon Avenue - Bldg 4
Portland, OR 97210 USA

LOCATION

- Guilds Lake / NW Industrial Area
- Ten (10) Buildings; 678,026 SF Park

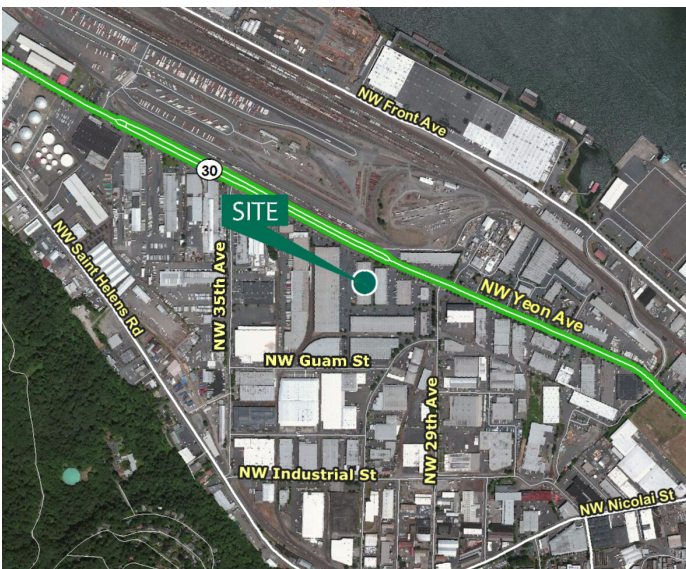
FACILITY

- Approximately 16,800 SF with TBD SF Office
- Six (6) Dock-High Doors with LL
- Fully Sprinklered
- 18' Clear Height

ADVANTAGES AND AMENITIES

- Close-In NW Location
- Minutes to Downtown Portland
- Immediate Access to I-405 and I-5
- Park Amenities Include Food and Convenience Services
- Please Call Brokers for Current Rates

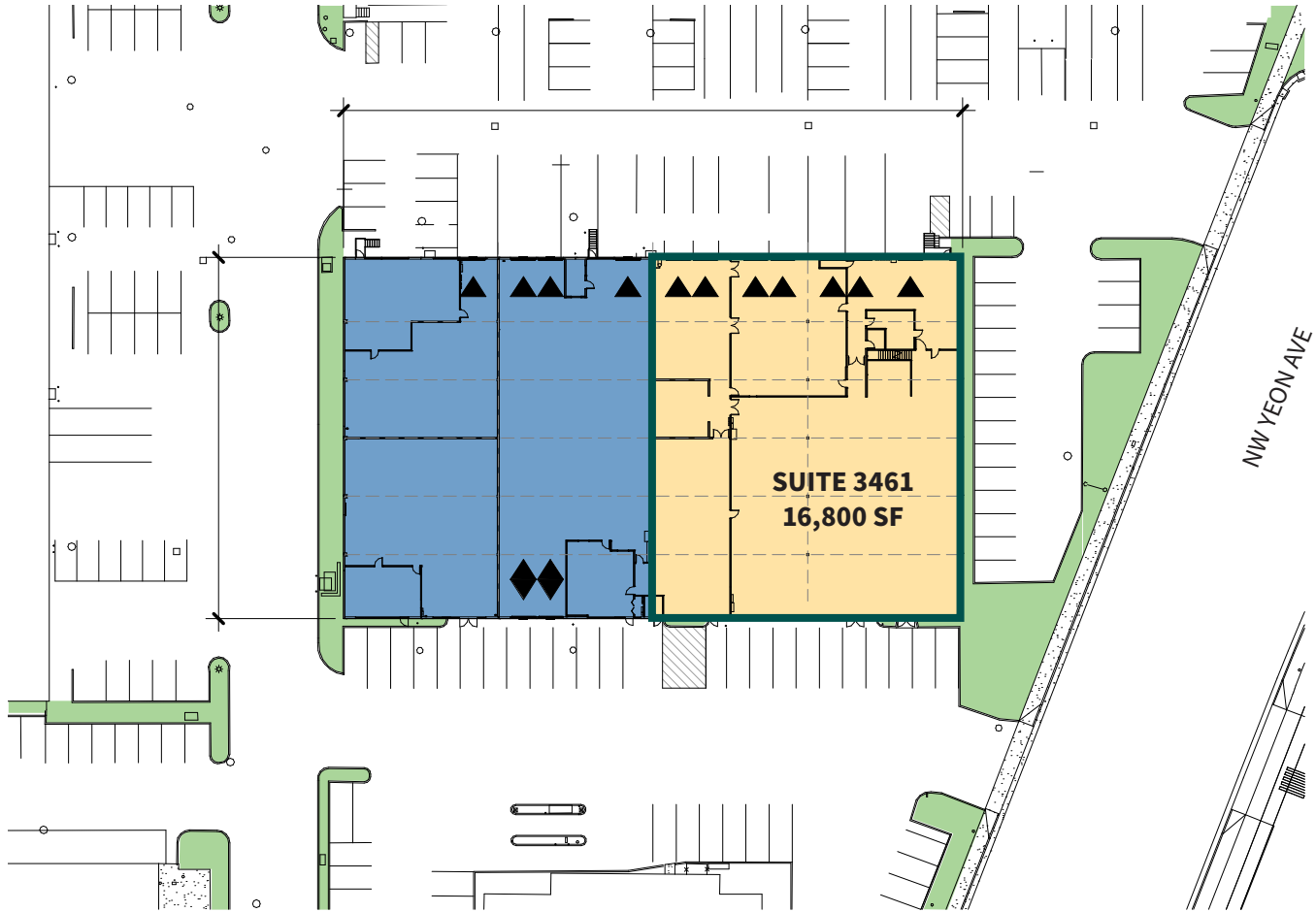
Your single-source service for efficient move-in and operations: prologisessentials.com



16,800 SF



Prologis NW Corporate Park



Capacity Commercial Group
Scott Kappes, SIOR
scottk@capacitycommercial.com
ph +1 503 517 9877
cell +1 503 816 4201
805 SW Broadway Street,
Suite 600,
Portland, OR 97205 USA

Capacity Commercial Group
Kenny Houser, SIOR
kenny@capacitycommercial.com
ph +1 503 517 9875
cell +1 503 385 6080
805 SW Broadway Street,
Suite 600,
Portland, OR 97205 USA

Prologis
Sean Colletta
scolletta@prologis.com
ph +1 503 276 7375
4380 SW Macadam Avenue,
Suite 285,
Portland, OR 97239 USA