

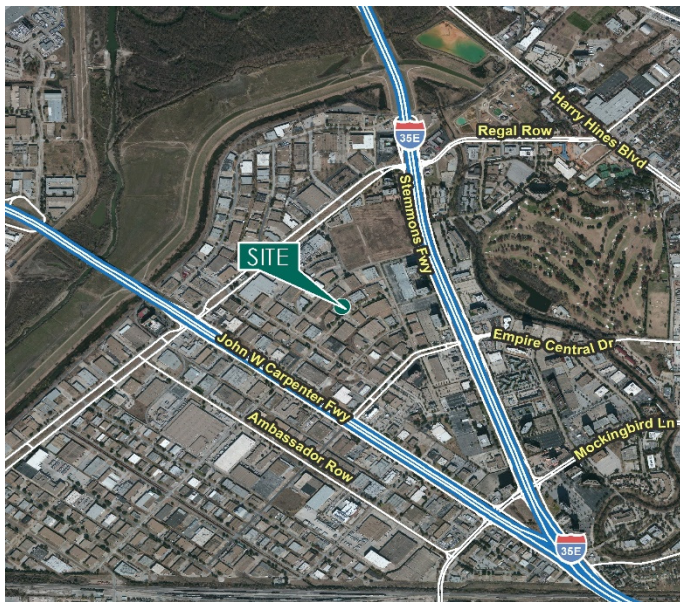
# 23,976 SF

## Industrial Space For Lease



## Prologis Stemmons

1235 Profit Drive  
Dallas, TX 75247 USA



### LOCATION

- Easy access to major highways including I-35E (0.3 mi.), TX-183 (0.4 mi.) and TX-12 (2.7 mi.)
- Four miles to Love Field

### FACILITY

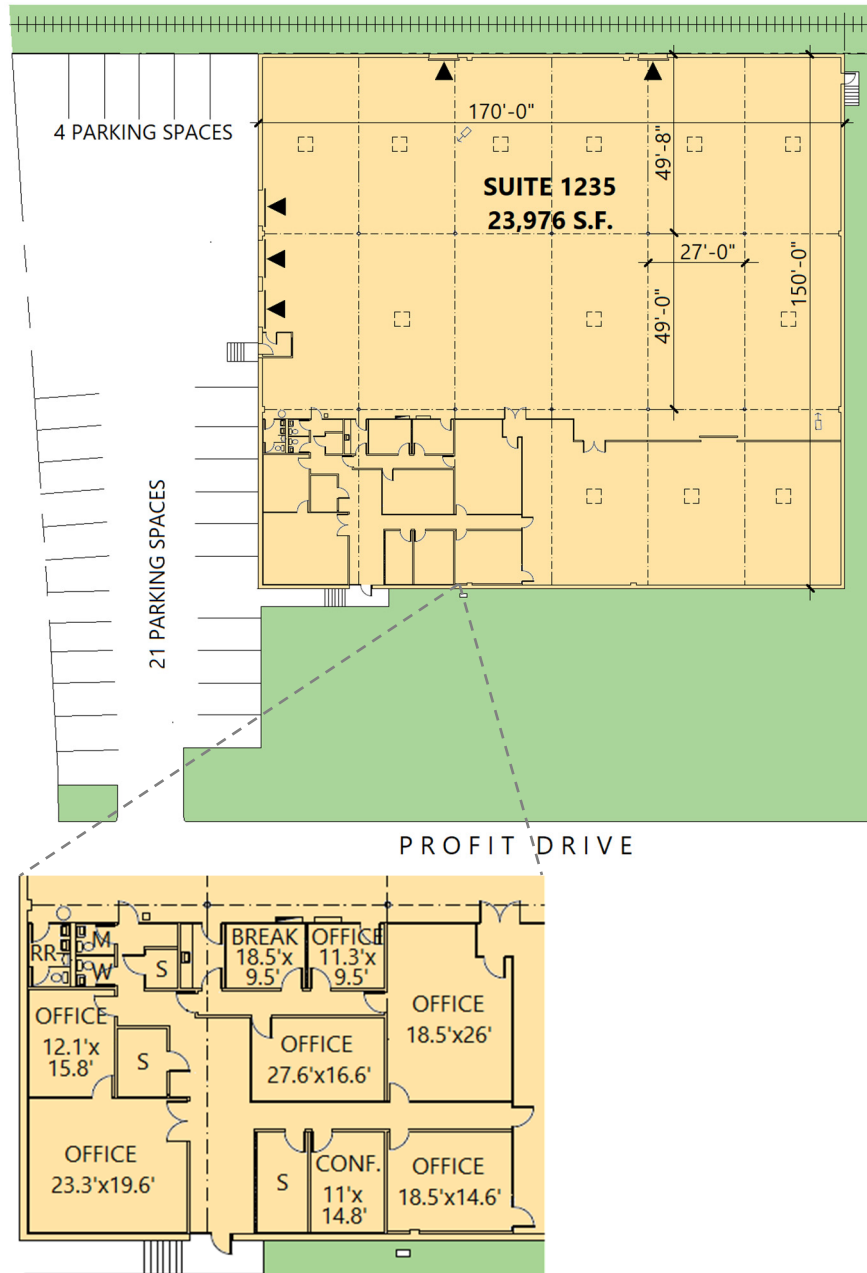
- 23,976 sf available
- 5,738 sf office
- 18' clear height
- 27' x 49' column spacing
- 3 (10' x 10') overhead dock doors
- 2 (8' x 10') rail doors

### ADVANTAGES AND AMENITIES

- Secured truck court
- Stand alone building
- 3,090 sf of HVAC warehouse

# 23,976 SF

## Industrial Space For Lease



**NAI Robert Lynn**

**Randy Wood**

rwood@nairl.com  
ph +1 214 256 7163  
cell +1 214 284 1255  
4851 LBJ Freeway  
10<sup>th</sup> Floor  
Dallas, TX 75244 USA

**NAI Robert Lynn**

**Chase Miller**

cmiller@nairl.com  
ph +1 214 256 7131  
cell +1 214 770 5495  
4851 LBJ Freeway  
10<sup>th</sup> Floor  
Dallas, TX 75244 USA

**Prologis**

**Sal Giunta**

sgiunta@prologis.com  
ph +1 972 884 9247  
cell +1 970 443 7574  
2021 McKinney Avenue  
Suite 1050  
Dallas, TX 75201 USA