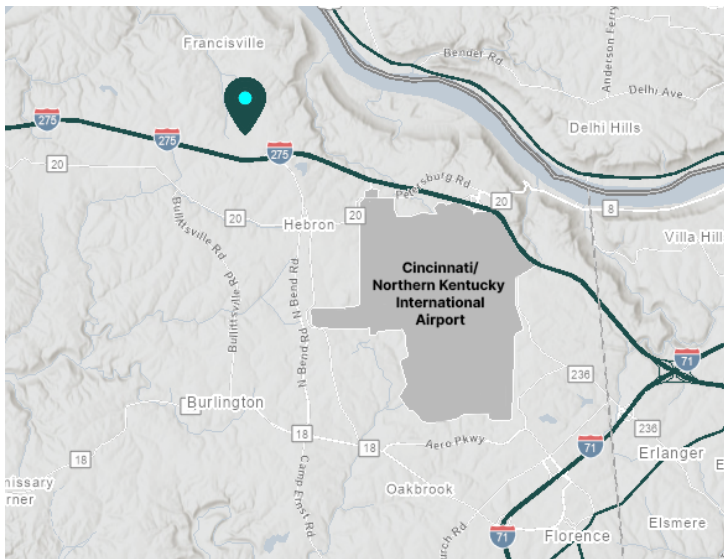


# 47,512 SF

**2090 Global Way  
Hebron, KY 41048**

Prologis Park West B



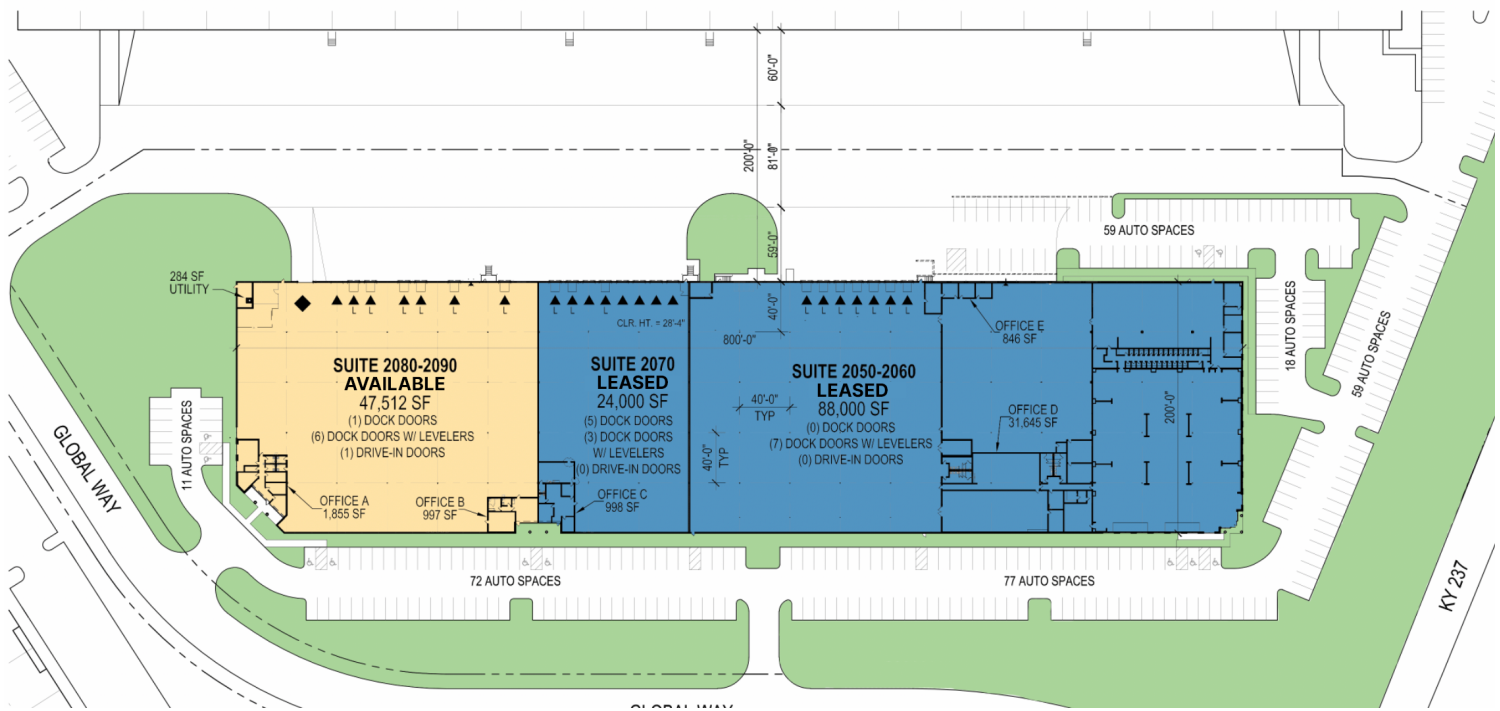
- Direct access to Interstate-275 and nearby I-71/I-75, providing unmatched connectivity for regional and national transportation
- Dedicated [Prologis Customer Experience Team](#)

## Property Features

Available Space	47,512 SF
Office SF	2,852 SF
Clear Height	28'
Column Spacing	40' x 40'
Dock Doors	7
Drive-in Doors	1
Trailer Parking Spaces	0
Car Parking Spaces	88
Electrical Service	325 amps
Sprinkler	ESFR
Lighting	LED Motion Sensor



Unlock the full potential of your warehouse with one strategic, single-source partner.



**LEGEND:**

- ▲ DOCK POSITION
- ▲ DOCK POSITION W/ LEVELER
- ◆ DRIVE-IN DOOR



**Colliers**  
**John Gartner**

john.gartner@colliers.com  
ph +1 513 562 2207

**Colliers**  
**Erin Casey**

erin.casey@colliers.com  
ph +1 513 562 2225

**Colliers**  
**Andrew Jacob**

andrew.jacob@colliers.com  
ph +1 513 562 2254

**Prologis**  
**Dan Colletto**

dcolletto@prologis.com  
ph +1 513 346 6317  
prologis.com