

22,400 SF

Industrial Space For Lease



Prologis Walnut Creek 9



8701 Wall Street, Suite 980
Austin, TX 78754 USA

LOCATION

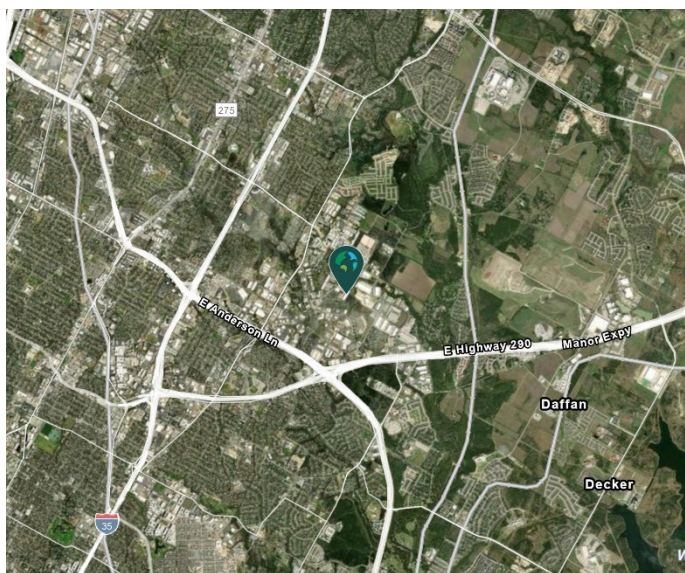
- Located in Walnut Creek Business District Park, Austin's largest master-planned, mixed use business park
- Located near Hwy 183 and Hwy 290 intersection, just east of IH-35
- Convenient to major employers: Applied Materials, US Farathane, Flextronics, HID Global, and Samsung Semiconductor

FACILITY

- 22,400 sf available
- 5,904 sf office
- 27' clear height
- 40' x 40' column spacing
- 4 dock high doors, 2 with EOD levelers
- 1 drive-in door
- ESFR Sprinkler System

ADVANTAGES AND AMENITIES

- Front load configuration
- Fully conditioned warehouse
- End cap space
- Access to the [Prologis Essentials](#) platform, which includes:
 - [Operations Essentials](#)
 - [Energy + Sustainability Essentials](#)
 - [Mobility Essentials](#)
 - [Workforce Essentials](#)



Your single-source service for efficient move-in and operations: [prologisessentials.com](https://www.prologisessentials.com)

www.prologis.com

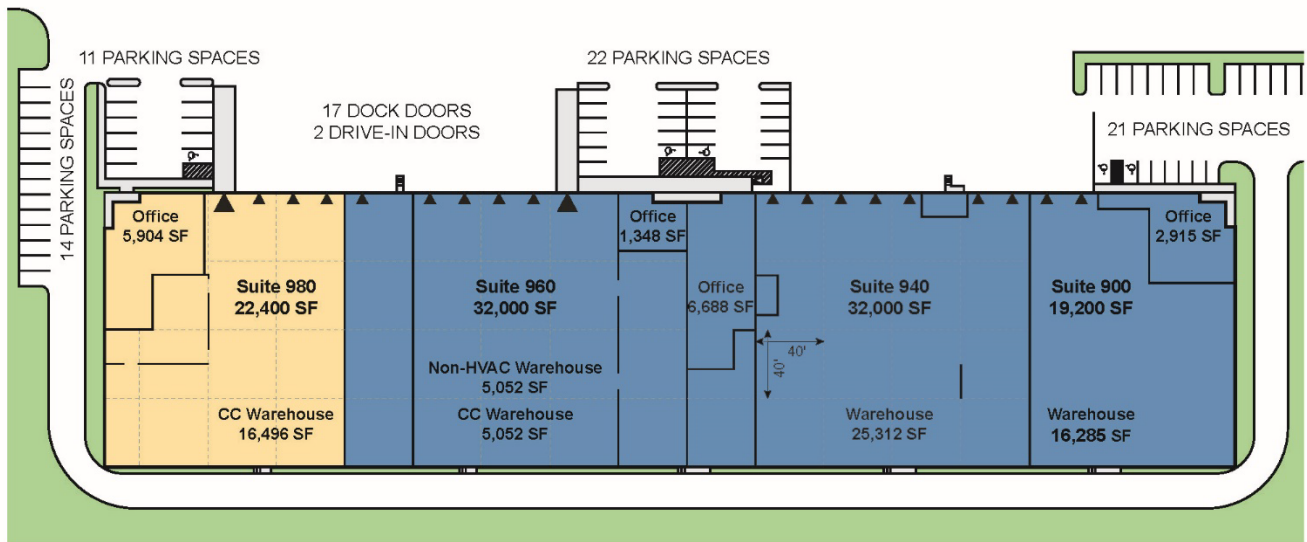
22,400 SF

Industrial Space For Lease



Prologis Walnut Creek 9

**Prologis Walnut Creek
Building 9**
105,600 SF



- AVAILABLE AREA
 - LEASED AREA
 - BACKGROUND LAND
 - DOCK DOOR
 - DRIVE-IN DOOR
- NORTH



Live Oak

Ryan Whalen
rwhalen@liveoak.com
ph +1 512 472 5000
cell +1 512 803 9928
2725 Bee Cave Road
Austin, TX 78746 USA

Live Oak

Doug Thomas
doug@liveoak.com
ph +1 512 472 5000
cell +1 512 695 3985
2725 Bee Cave Road
Austin, TX 78746 USA

Prologis

Natalie Hardy
nhardy@prologis.com
ph +1 972 884 9246
cell +1 662 574 6755
600 Congress Avenue, 16th Floor
Austin, TX 78701 USA