

16,146 SF

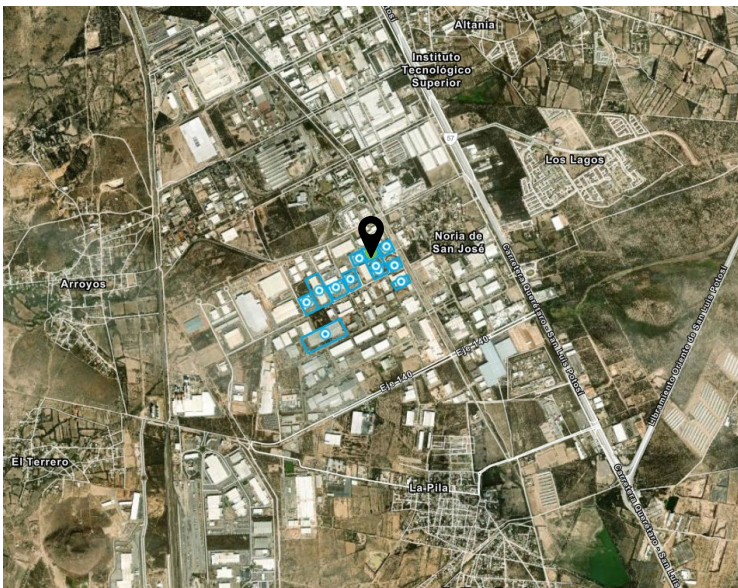
Industrial Space For Lease



Prologis Park San Luis Potosi 16 B



Circuito Interior Avenue 115
San Luis Potosi 78395 Mexico



LOCATION

- Situated along Circuito Interior Avenue, the property benefits from seamless access to San Luis Potosí's main transportation corridors, including Federal Highway 57 and major routes connecting to Mexico City, Monterrey, and Querétaro. This central position ensures efficient logistics and distribution.
- San Luis Potosí is part of the Bajío industrial corridor, known for its robust automotive, aerospace, and manufacturing sectors. Being in this dynamic region offers access to a thriving business ecosystem and potential partnerships with industry leaders.

FACILITY

- Clear Height 28' / 8.5 m
- Column Spacing 68' x 32' / 21 x 10 m
- 4 Loading Docks
- 40 Parking Spaces
- Til-up concrete Walls
- Transformer 200 KVA 's

ADVANTAGES AND AMENITIES

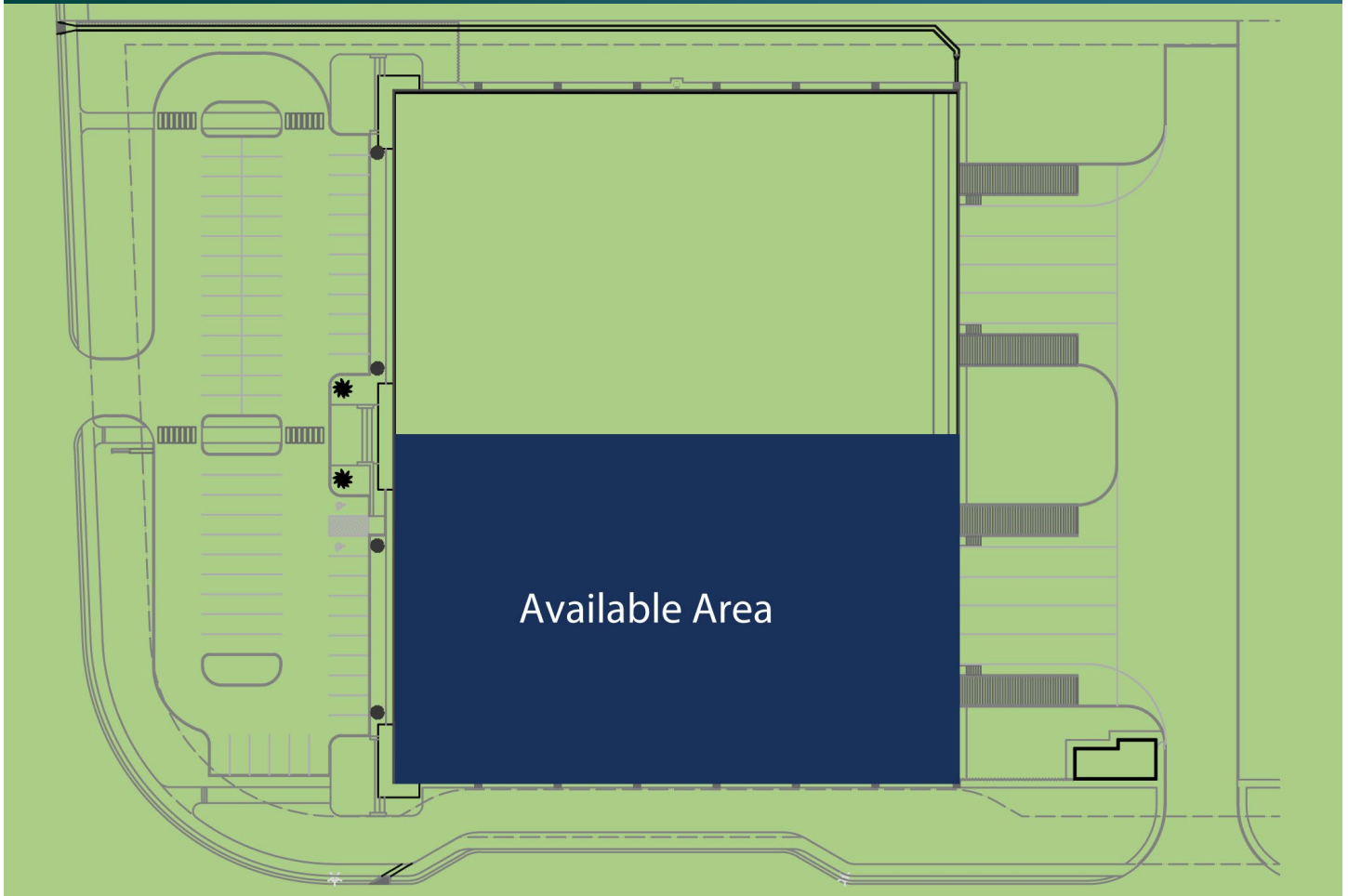
- The property features advanced utilities, including high-capacity electricity, water access, and telecommunications, designed to support diverse industrial and commercial operations.
- The area is well-served by essential services, including hotels, restaurants, and healthcare facilities, ensuring convenience for employees and visitors.

16,146 SF

Industrial Space For Lease



Prologis Park San Luis Potosi 16 B



Prologis

Beatriz Baez
Leasing Manager
bbaez@prologis.com
ph +52 33 3134 5453

Prologis

Sandra Solis
VP Market Officer
sesolis@prologis.com