

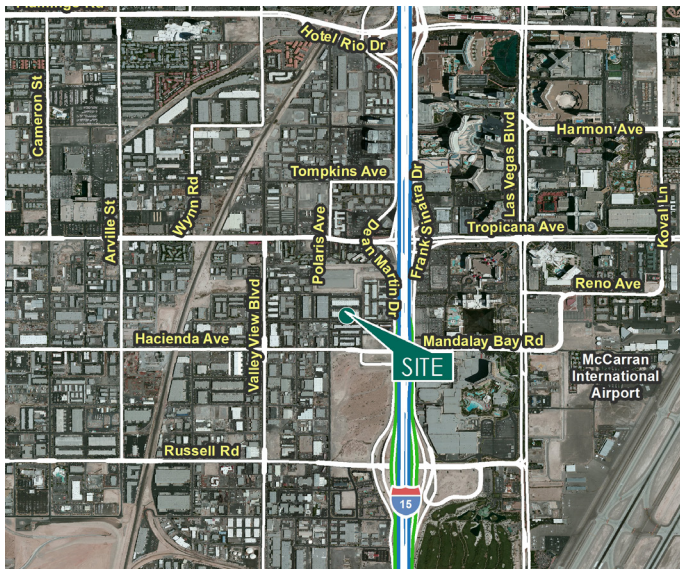
10,400 SF

Industrial Space For Lease



Prologis West One Business Center - Building #3

3250 W. Ali Baba Lane, Suite A
Las Vegas, NV 89118 USA



LOCATION

- Convenient Freeway Access to I-15 via Tropicana Avenue
- Zoned Industrial: M-1 (Clark County)

FACILITY

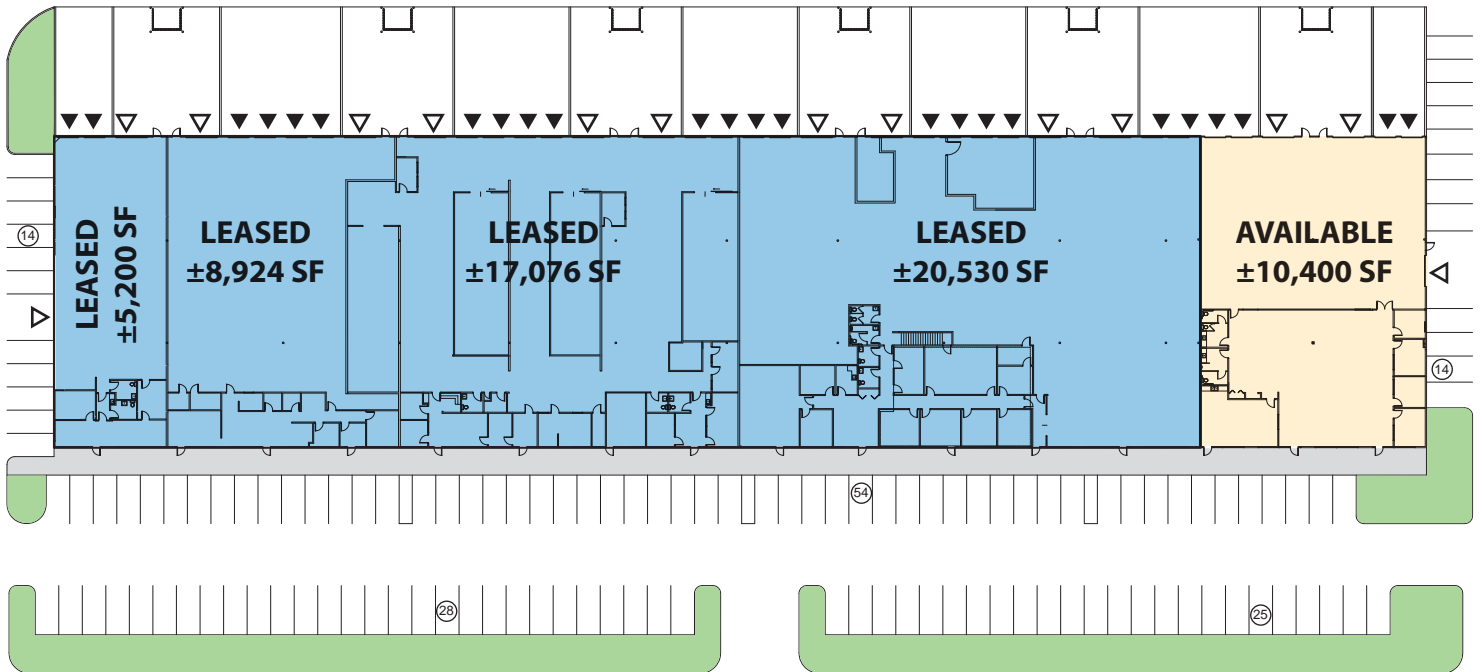
- Total Building Square Footage - ±62,130 SF
- Available Square Footage - ±10,400 SF
- ±4,500 SF of Existing Office Space
- Four (4) Dock High Loading Doors
- Three (3) Drive-In Door
- Fire Sprinkler System (115.8gpm/57.8 sf)
- 21' Minimum Clear Height
- Rear Loading
- 200 Amps, 120/208 Volts, 3-Phase Power

ADVANTAGES AND AMENITIES

- Near an abundance of restaurants, service amenities and industrial owner/users and manufacturing/distribution facilities.

10,400 SF

Industrial Space For Lease



C&W - Nick Abraham

Associate
nick.abraham@cushwake.com
ph +1 702 605 1620
Lic. S.00176348
6725 Via Austi Parkway
Suite 275
Las Vegas, NV 89119 USA

C&W - Greg Tassi, SIOR

Executive Managing Director
greg.tassi@cushwake.com
ph +1 702 605 1713
Lic. S.0056472
6725 Via Austi Parkway
Suite 275
Las Vegas, NV 89119 USA

Prologis - Mathias Hughes

VP - Market Office Nevada
mhughes@prologis.com
ph +1 775 829 3035
Lic. S.0073128
3800 Howard Hughes Parkway
Suite 1250
Las Vegas, NV 89169 USA

Prologis - Renee Carroll

Leasing Manager
rcarroll@prologis.com
ph +1 702 891 9503
Lic. S.168458 & PM.0164416
3800 Howard Hughes Parkway
Suite 1250
Las Vegas, NV 89169 USA

No warranty or representation, expressed or implied, is made as to the accuracy of the information contained herein, and same is submitted subject to error and omissions.

www.prologis.com

www.cushmanwakefield.com

© 2020 Cushman & Wakefield U.S., Inc. All rights reserved. This information has been obtained from sources believed reliable, but has not been verified for accuracy or completeness. You should conduct a careful, independent investigation of the property and verify all information. Any reliance on this information is solely at your own risk. Cushman & Wakefield U.S., Inc. and the C&W logo are service marks of Cushman & Wakefield U.S., Inc. All other marks displayed on this document are the property of their respective owners. Photos herein are the property of their respective owners. Use of these images without the express written consent of the owner is prohibited.