

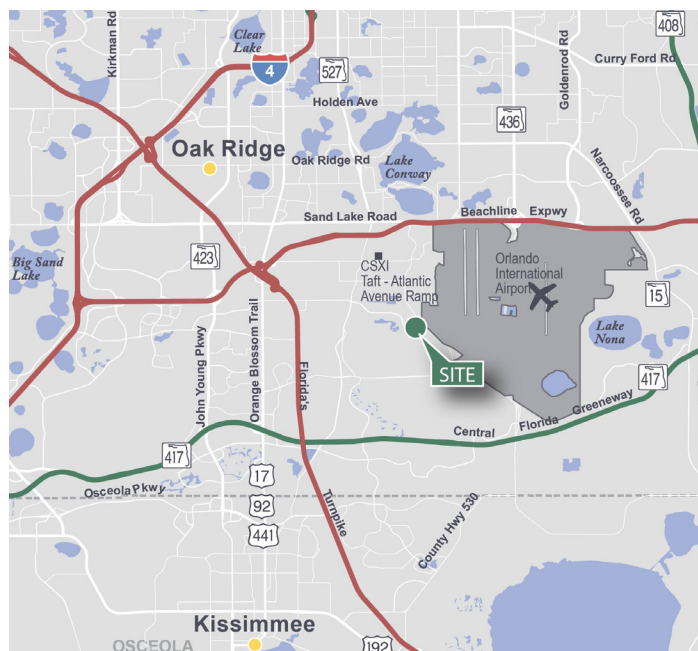
# 7.70 Acres

## Industrial Land For Development



## Prologis Park at AIPO

Tradeport Drive at Boggy Creek Road  
Orlando, FL 32824 USA



### LAND PARCEL T-27.1

- 7.70 acres available

### T-27.1 SITE PLAN OPTION

- 124,740 SF building
- Rear loading
- 36' clear height
- 210' building depth
- ESFR sprinkler system

### LOCATION

- South of the Beachline Expressway (SR 528) and immediately adjacent to Orlando International Airport
- Excellent access to Boggy Creek Road, S. Orange Avenue, Florida's Turnpike and Orange Blossom Trail (US 441)

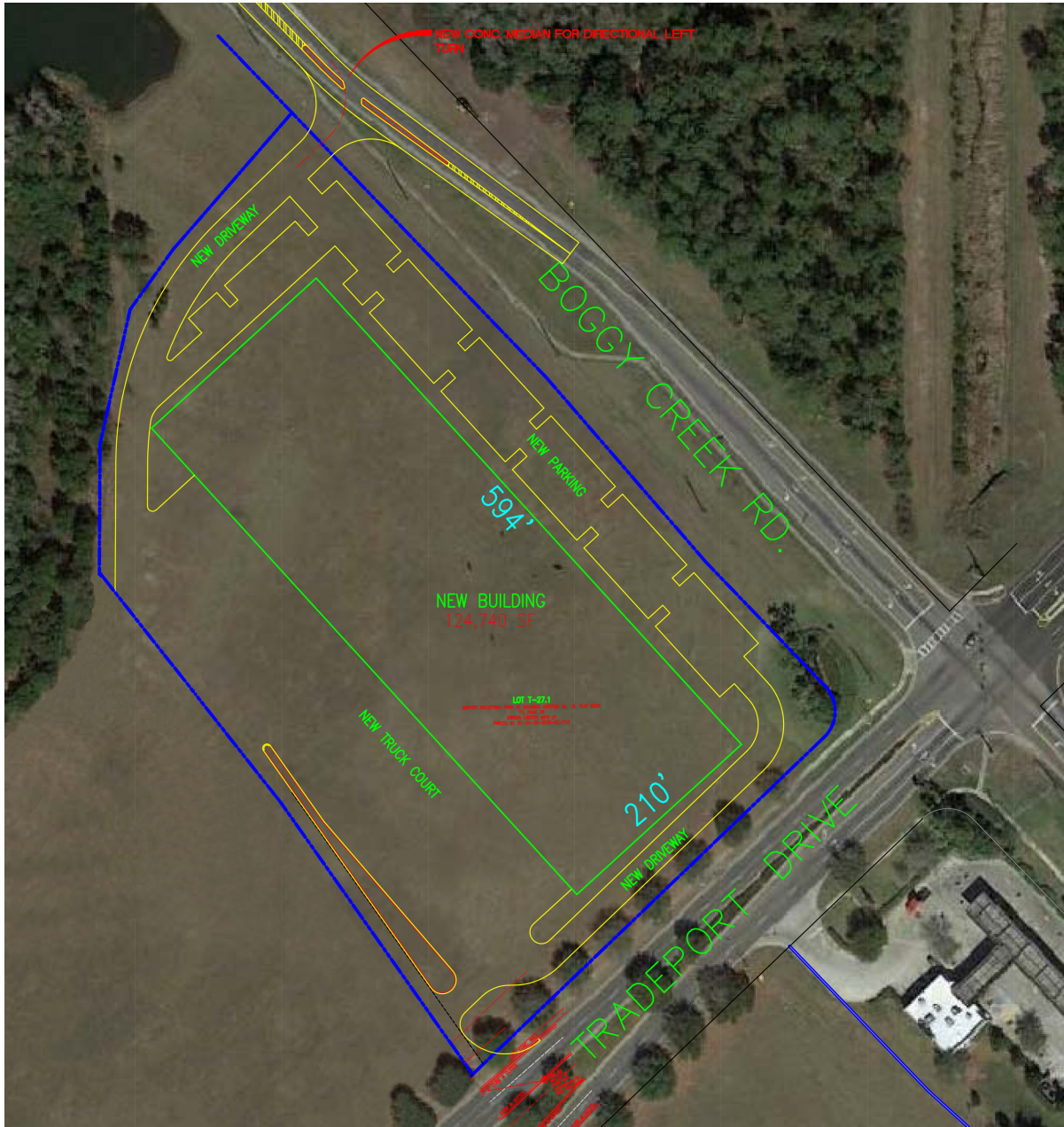


# 7.70 Acres

## Industrial Land For Development



T-27.1 124,740 SF SITE PLAN OPTION



### AIPO

Paul Sabga

psabga@aipo.net

+1 407.927.3981

255 S. Orange Avenue, Suite 725  
Orlando, FL 32801 USA

### Prologis

Brendon Dedekind, CCIM

bdedekind@prologis.com

+1 407.244.7105

300 S. Orange Avenue, Suite 1110  
Orlando, FL 32801 USA