

# 41,600 SF

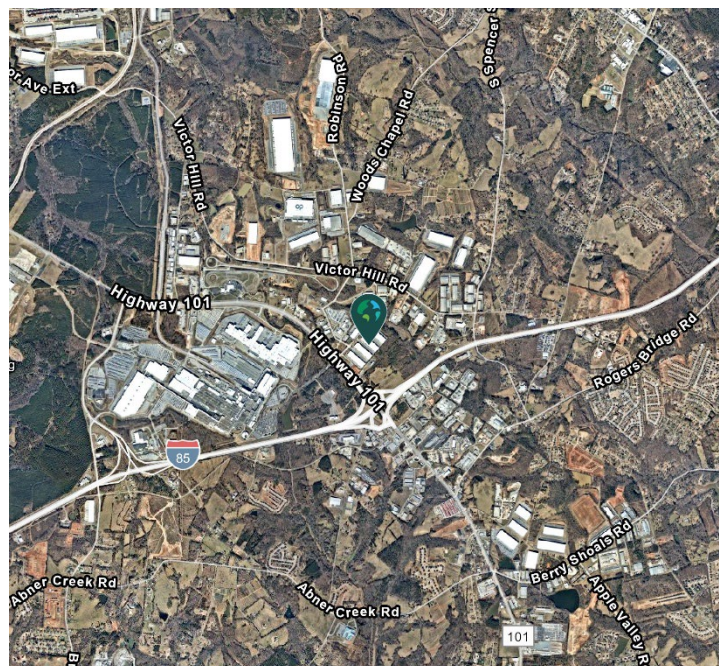
Industrial Space For Lease



## Prologis Caliber Ridge 130



130 Caliber Ridge Drive, Suite 131  
Greer, SC 29651 USA



### LOCATION

- Located at the interchange of Highway 101 and I-85
- Directly across from the BMW Manufacturing Plant
- 5 miles to Greer Inland Port rail service
- 4 miles to Greenville-Spartanburg International Airport

### FACILITY

- 156,000 total SF
- 41,600 available SF
- 3,880 office SF
- 30' clear height
- 50' x 50' column spacing
- 5 dock doors
- 1 drive-in door
- 4 potential dock doors
- ESFR sprinkler system
- LED lighting
- 1200 amp 277/480v 3 phase power

### ADVANTAGES AND AMENITIES

- First class, Professionally landscaped, controlled park environment
- Prologis Clear Lease – a simplified lease that fixes operating and capital expenses for the entire lease term
- Efficient and cost effective warehouse solutions through Prologis Essentials.

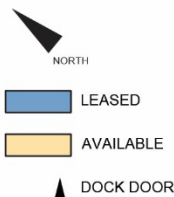
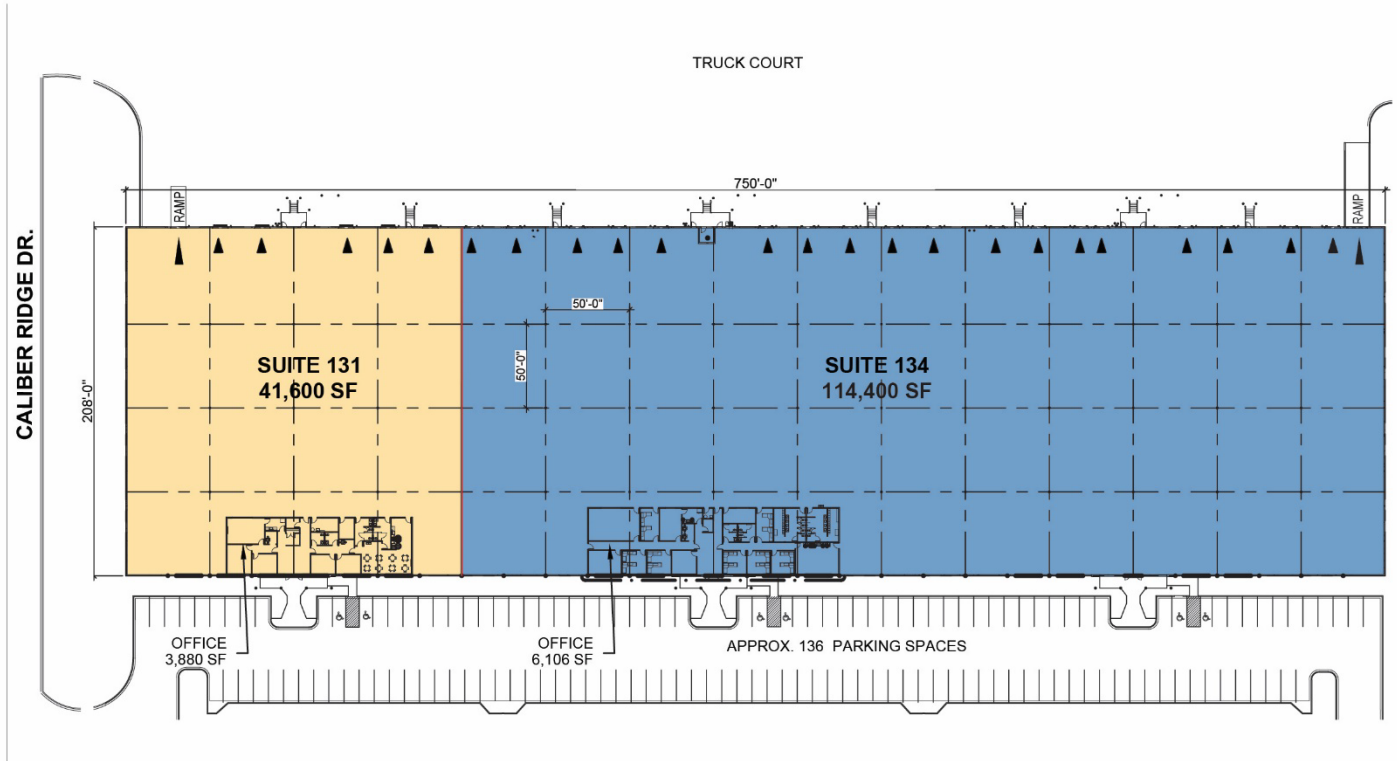
**Prologis Essentials: your single-source service for efficient move-in and operations at [prologisessentials.com](https://www.prologisessentials.com)**

# 41,600 SF

Industrial Space For Lease



## Prologis Caliber Ridge 130



SCAN ME

**Cushman & Wakefield**  
Brian Young, CCIM, SIOR  
Brian.young@thalhimer.com  
ph +1 864 370 8087  
cell +1 864 787 7530  
Wells Fargo Center  
15 South Main Street, Suite 502  
Greenville, SC 29601 USA

**Cushman & Wakefield**  
Elliot Fayssoux  
Elliot.fayssoux@thalhimer.com  
ph +1 864 370 8190  
cell +1 864 430 0349  
Wells Fargo Center  
15 South Main Street, Suite 502  
Greenville, SC 29601 USA

**Cushman & Wakefield**  
Kacie Jackson, SIOR  
Kacie.jackson@thalhimer.com  
ph +1 864 370 8193  
cell +1 864 430 0142  
Wells Fargo Center  
15 South Main Street, Suite 502  
Greenville, SC 29601 USA

**Prologis**  
Todd Summerfield  
tsummerfield@prologis.com  
ph +1 704 426 8002  
cell +1 410 441 1145  
1900 South Blvd  
Suite 302  
Charlotte, NC 28203 USA

**Prologis Essentials: your single-source service for efficient move-in and operations at [prologisessentials.com](https://prologisessentials.com)**

No warranty or representation, expressed or implied, is made as to the accuracy of the information contained herein, and same is submitted subject to error and omissions.