

48,789 SF

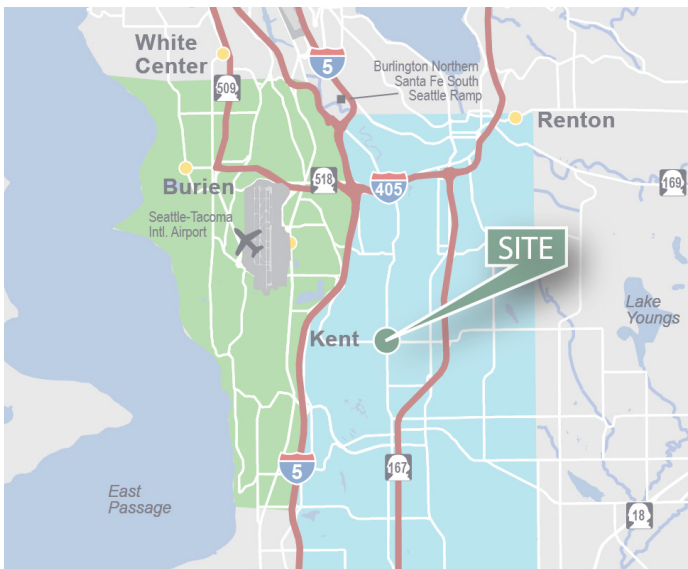
Industrial Space For Lease



Prologis Park O'Donnell - Building 3



7015 S 212th St
Kent, WA 98032 USA



LOCATION

- Last Mile location in Kent Valley Industrial Market
- Driving Distances:
 - 3 miles to I-5
 - 1 miles to Hwy 167
 - 16 miles to Downtown Seattle
 - 20 miles to Downtown Tacoma
 - 18 miles to Port of Seattle
 - 19 miles to Port of Tacoma

FACILITY

- 48,789 total square feet available
- 7,189 SF existing Office area (Modifications underway reducing office area to +/- 3,009 SF)
- 24' Clear Height
- 12 Dock High doors (2 mechanical pit levelers)
- 3 Grade Level doors
- Available for immediate occupancy

ADVANTAGES AND AMENITIES

- Abundant car parking
- Four building project consisting of over 300,000 SF
- Concrete aprons
- Zoned M1 (City of Kent)

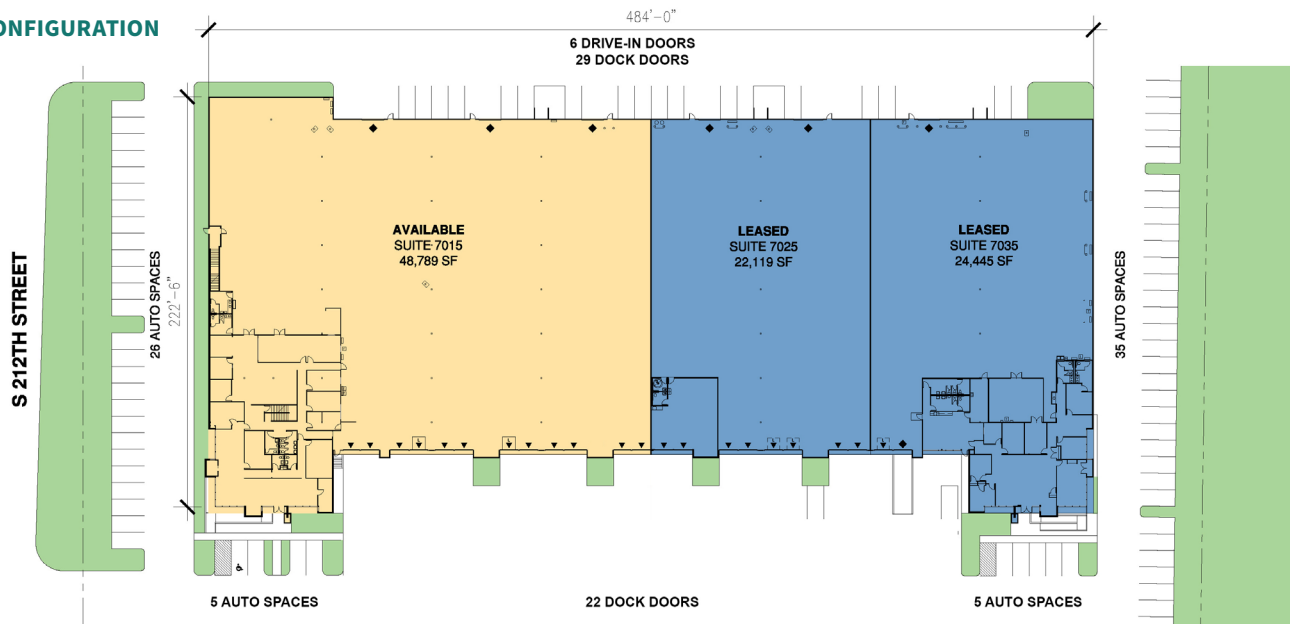
48,789 SF

Industrial Space For Lease

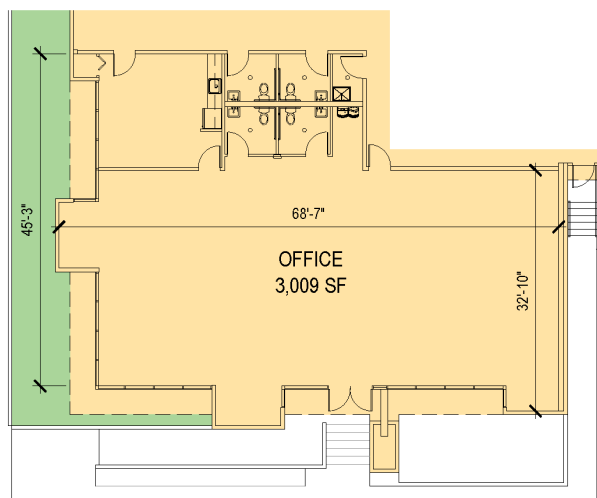


Prologis Park O'Donnell - Building 3

EXISTING CONFIGURATION



CONCEPTUAL OFFICE PLAN (AVAILABLE JULY 2023)



Lee & Associates Commercial Real Estate Services

Tony Kusak
tkusak@lee-associates.com
ph +1 425.818.1539
cell +1 206.295.4753
170 120th Avenue NE
Suite 203
Bellevue, WA 98005 USA

Billy Moultrie
bmoultrie@lee-associates.com
ph +1 253.444.3022
cell +1 206.228.1847
950 Pacific Avenue
Suite 200
Tacoma, WA 98402 USA

Christian Mattson
cmattson@lee-associates.com
ph +1 253.444.3021
cell +1 206.930.5020
950 Pacific Avenue
Suite 200
Tacoma, WA 98402 USA

Andrew Hull
ahull@lee-associates.com
ph +1 253.444.3023
cell +1 425.559.3244
950 Pacific Avenue
Suite 200
Tacoma, WA 98402 USA

Prologis

Mark Roddy
mroddy@prologis.com
ph +1 206.414.7617
cell +1 253.514.0299
33930 Weyerhaeuser Way S
Suite 100
Federal Way, WA 98001 USA