

# 107,585 SF

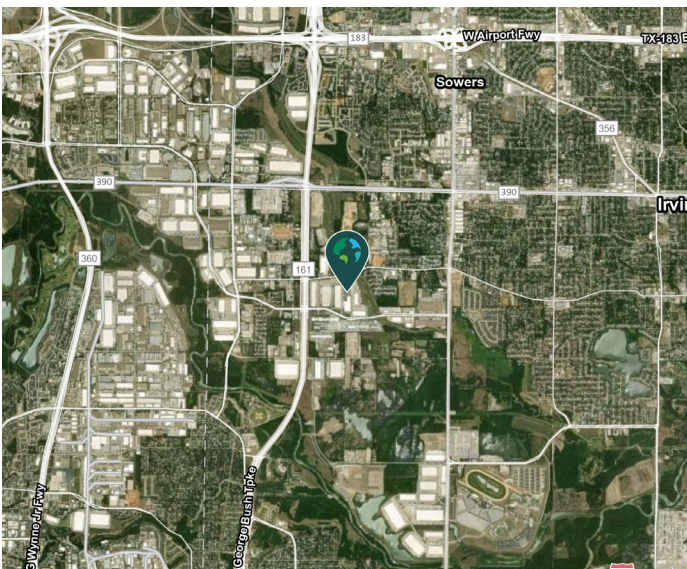
Industrial Space For Lease



## Prologis Great Southwest 48



410 W Trinity Boulevard, Suite 150  
Grand Prairie, TX 75050 USA



### LOCATION

- Easy access to SH 360, I-30, and TX 161
- Located in the heart of the North Great Southwest industrial submarket with frontage on W. Trinity Blvd.

### FACILITY

- 107,585 sf available
- 1,556 sf office
- 30' clear height
- 50' x 50' typical bay spacing
- 10 (9' x 10') dock doors with levelers
- 1 (14' x 16') overhead dock door with ramp
- ESFR sprinkler system
- One (1) HVLS fan
- Additional trailer parking available

### ADVANTAGES AND AMENITIES

- Access to the [Prologis Essentials](#) platform, which includes:
  - [Operations Essentials](#)
  - [Energy + Sustainability Essentials](#)
  - [Mobility Essentials](#)
  - [Workforce Essentials](#)



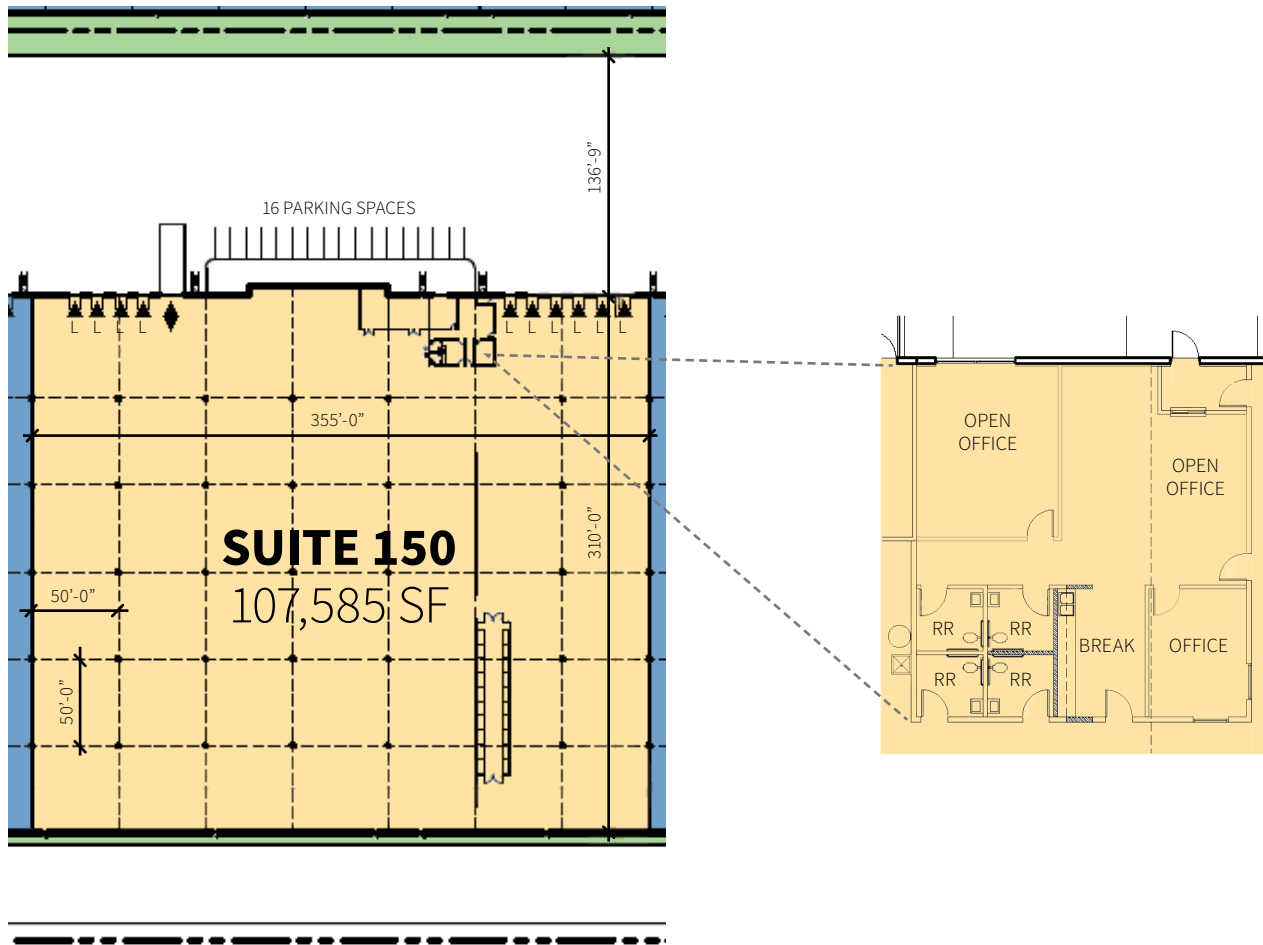
Scan to watch the property video!

# 107,585 SF

Industrial Space For Lease



## Prologis Great Southwest 48



### Cushman & Wakefield

David Eseke  
david.eseke@cushwake.com  
ph +1 972 663 9852  
cell +1 805 637 9966  
2021 McKinney Avenue  
Suite 900  
Dallas, TX 75201 USA

### Cushman & Wakefield

Clay Balch  
clay.balch@cushwake.com  
ph +1 972 663 9853  
cell +1 972 742 9234  
2021 McKinney Avenue  
Suite 900  
Dallas, TX 75201 USA

### Prologis

Ryan McNaughton  
rmcnaughton@prologis.com  
ph +1 972 884 9218  
cell +1 214 673 9489  
2021 McKinney Avenue  
Suite 1050  
Dallas, TX 75201 USA