

# 53,988 SF

Warehouse Space For Lease



## Prologis San Leandro



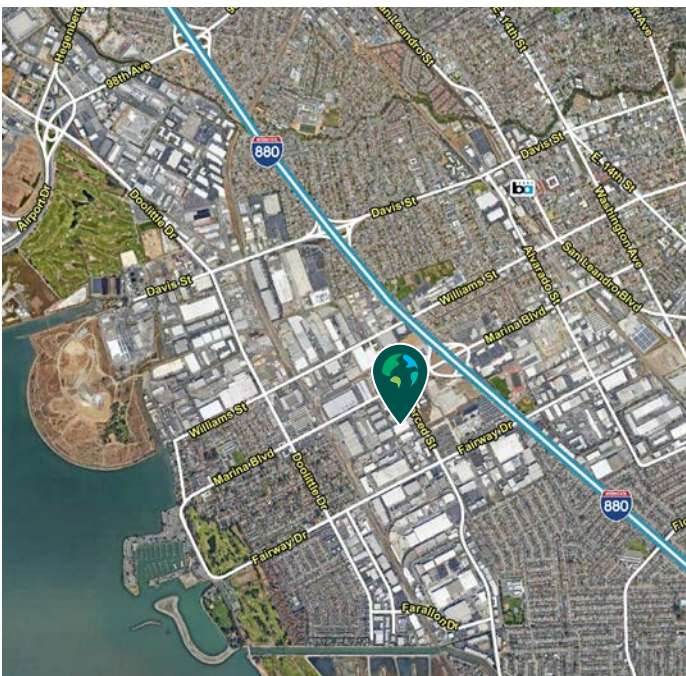
2480-2486 Verna Court  
San Leandro, California 94577, USA

### LOCATION

- Close proximity to Oakland International Airport and the Port of Oakland, with excellent access to Interstate 880 via Marina Boulevard.

### FACILITY

- ±53,988 SF Warehouse
- ±6,488 SF Office
- ±24' Clear Height
- 9 Dock-High Doors (5 Pit Levelers & 4 Edge-of-Dock Levelers)
- 3 Grade Level Doors
- 400 Amps @ 277/480 Volts Power (200 Amps in Each Unit)
- 0.37 GPM / 3,000 SF Sprinkler System
- ±50' x 20' Column Spacing
- Additional Parking/Yard at Rear of Building
- Call Broker for Rate & Touring Instructions
- Available August 1, 2023



**Prologis Essentials: your single-source service for efficient move-in and operations at [prologisessentials.com](https://www.prologisessentials.com)**

# 53,988 SF

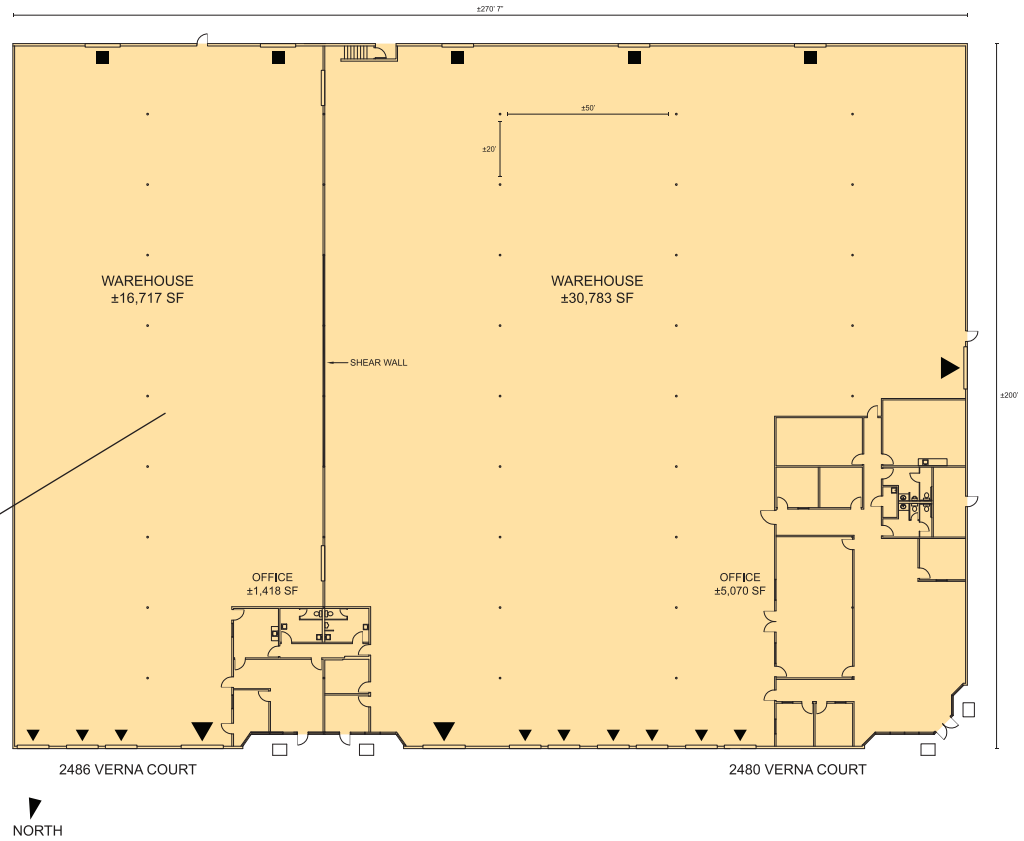
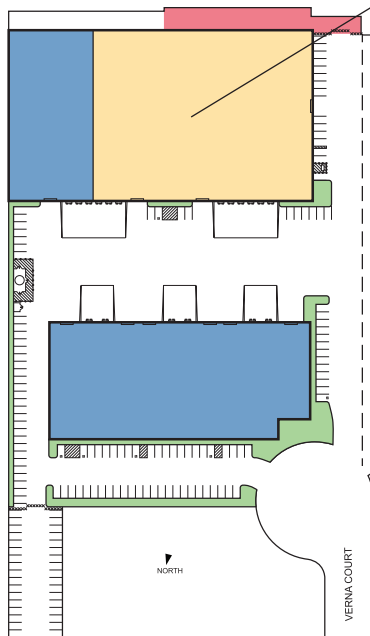
## Warehouse Space For Lease



# Prologis San Leandro

2480-2486 VERNA COURT  
SAN LEANDRO  
±53,988 SF

- AVAILABLE
  - LEASED
  - BACKGROUND LAND
  - PARKING/YARD AREA
  - DOCK DOOR
  - DRIVE-IN DOOR
  - RAIL DOOR - NOT ACTIVE
- NORTH



**KBC Advisors**  
Tom Damaschino  
tom.damaschino@kbcadvisors.com  
cell +1 510 599 1189  
312 Clay Street, Suite 180  
Oakland, CA 94607 USA  
DRE License# 01261227



**KBC Advisors**  
Sam Higgins, SIOR  
sam.higgins@kbcadvisors.com  
cell +1 415 987 8798  
312 Clay Street, Suite 180  
Oakland, CA 94607 USA  
DRE License# 01329023



**Cushman & Wakefield**  
Jeff Starkovich, SIOR  
jeff.starkovich@cushwake.com  
cell +1 510 409 1111  
555 12th Street, Suite 1400  
Oakland, CA 94607 USA  
DRE License# 00644571



**Prologis**  
Jesse Becerra  
jbecerra@prologis.com  
ph +1 510 661 4039  
3353 Gateway Boulevard  
Fremont, CA 94538 USA

**Prologis Essentials: your single-source service for efficient move-in and operations at [prologisessentials.com](http://prologisessentials.com)**

No warranty or representation, expressed or implied, is made as to the accuracy of the information contained herein, and same is submitted subject to error and omissions.

# GO BEYOND THE BUILDING

**Prologis Essentials** is the single source for warehouse solutions to keep facilities running at a high level of efficiency. Our offerings are easy and convenient to procure and implement, providing support for move-in, moving forward, and growing any business.

## MATERIAL HANDLING

- A. Racking & Shelving
  - I. Layout and Design
  - II. New and Used Material
  - III. Permitting Services
  - IV. Buybacks and Liquidations
- B. Forklifts
  - I. Electric and Propane
  - II. New, Used, and Refurbished
  - III. Rentals
  - IV. Service



## ENERGY

- A. Solar
- B. LED Lighting
- C. EV Charging
- D. Generators



## AUTOMATION/ ADVANCED SOLUTIONS

- A. Conveyor and Sortation
- B. Locus Robotics
- C. VLMs, Shuttles, Carousels, AS/RS
- D. Pick Modules/Mezzanine

## SMART BUILDING

- A. Fiber Backbone
- B. Network and Cabling
- C. Internet Service
- D. Access Points
- E. Security Cameras and Monitoring Services
- F. Badge Access and Control
- G. Barcode Scanning



## PRODUCTS AND SERVICES

- A. Moving and Relocation Services
- B. HVLS Fans
- C. Office Furniture
- D. In-Plant Modular Offices
- E. Yard Ramps
- F. Janitorial Service
- G. Pest Control



**John Kenley**  
Essentials Solutions Manager  
jkenley@prologis.com  
415-733-9402

 **PROLOGIS<sup>®</sup>**  
ESSENTIALS

[www.prologisessentials.com](http://www.prologisessentials.com)