

28,891 SF

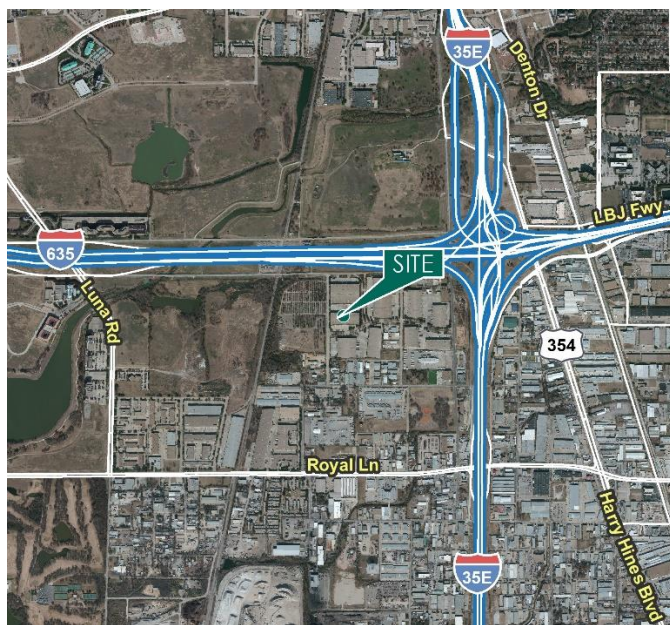
Industrial Space For Lease



Prologis Dallas Corporate Center



11625 Columbia Center Drive, Suite 400
Dallas, TX 75229 USA



LOCATION

- Easy access to I-35E, I-635 and the George Bush Tollroad
- Close proximity to the North Dallas Tollroad and DFW International Airport

FACILITY

- 28,891 sf available
- 1,761 sf office
- 24' clear height
- 5 (9' x 10') overhead dock doors, 1 with leveler
- 1 (9' x 10') overhead dock door with ramp
- ESFR sprinkler system

ADVANTAGES AND AMENITIES

- Front load configuration
- 180' shared truck court
- Access to the [Prologis Essentials](#) platform, which includes:
 - [Operations Essentials](#)
 - [Energy Essentials](#)
 - [Workforce Essentials](#)
 - [Transportation Essentials](#)
 - [Digital Essentials](#)

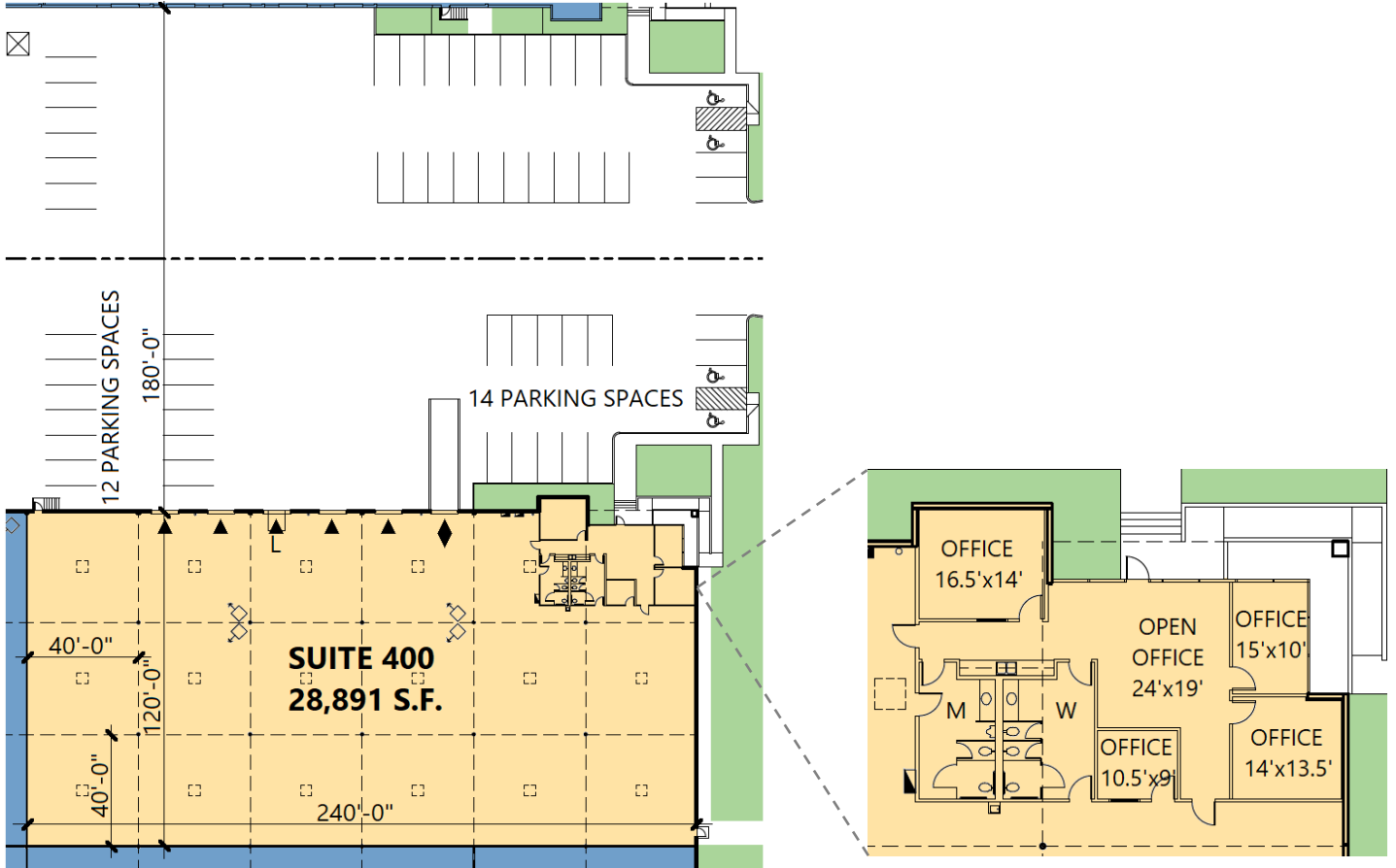
Prologis Essentials: your single-source service for efficient move-in and operations at prologisessentials.com

28,891 SF

Industrial Space For Lease



Prologis Dallas Corporate Center



Prologis

Mitch Pruitt
mpruitt@prologis.com
ph +1 972 884 9221
cell +1 214 518 9292
2021 McKinney Avenue
Suite 1050
Dallas, TX 75201 USA

Prologis Essentials: your single-source service for efficient move-in and operations at [prologisessentials.com](https://www.prologisessentials.com)

No warranty or representation, expressed or implied, is made as to the accuracy of the information contained herein, and same is submitted subject to error and omissions.