

# 195,000 SF

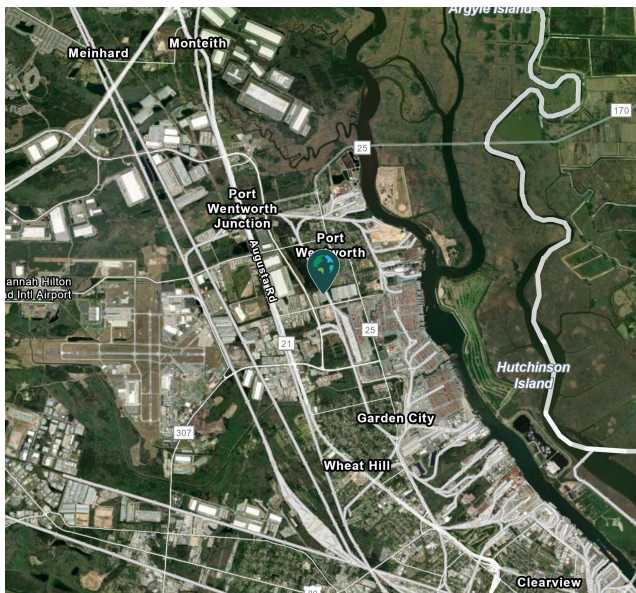
Industrial Space For Lease



## Prologis Portside



318 Grange Road  
Savannah, Georgia 31407 USA



### LOCATION

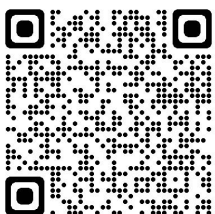
- ±2.5 miles from the Port of Savannah
- ±4.3 miles from I-95
- ±4.5 miles from the Savannah/Hilton Head International Airport
- ±6.9 miles from I-16

### FACILITY

- 195,000 SF available
- 2,027 SF office
- 25' minimum clear height
- 60' x 30' column spacing
- Twelve (12) 10' x 10' dock high doors with levelers
- Two (2) 20' x 10' oversized dock high doors
- Two (2) 20' x 18' oversized drive-in doors
- ESFR sprinkler system
- 480/277V, 800 amps
- Trailer storage available

### ADVANTAGES AND AMENITIES

- Prologis Clear Lease® – Know your lease expenses and capital costs with greater certainty before you sign



Scan the QR code for more info!

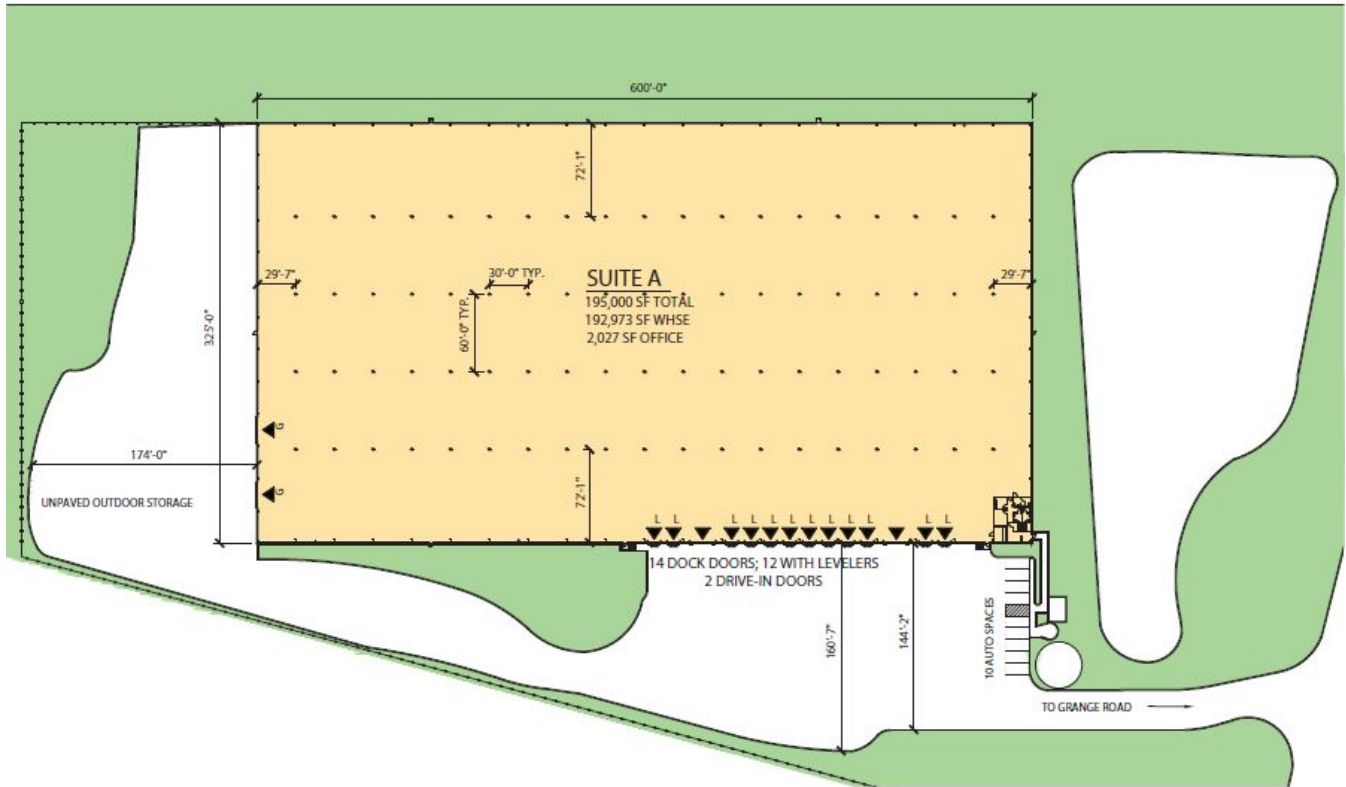
Your single-source service for efficient move-in and operations: [prologisessentials.com](https://www.prologisessentials.com)

# 195,000 SF

## Industrial Space For Lease



### Prologis Portside



#### LEGEND:

- ▲ DOCK DOOR
- ▲ DOCK DOOR W/LEVELER
- ◆ DRIVE-IN DOOR
- ▲ ON-GRADE DOOR
- ▭ EDGE OF DOCK LEVELER
- ▽ PIT LEVELER
- LAND
- LEASED AREA
- VACANT AREA



**JLL**  
Chris Tomasulo, SIOR  
chris.tomasulo@jll.com  
ph +1 404 995 2462  
cell +1 770 330 3263  
3344 Peachtree Rd NE Ste 1200  
Atlanta, GA 30326 USA

**JLL**  
Bennett Rudder, SIOR  
bennett.rudder@jll.com  
ph +1 912 250 4595  
cell +1 404 960 0080  
347 Abercorn Street  
Savannah, GA 31401 USA

**JLL**  
Lindsey Wilmot  
lindsey.wilmot@jll.com  
ph +1 912 250 4595  
cell +1 912 663 9394  
347 Abercorn Street  
Savannah, GA 31401 USA

**Prologis**  
Cassie Hanavich  
chanavich@prologis.com  
ph +1 404 760 7256  
cell +1 404 449 5356  
3475 Piedmont Road NE Ste 650  
Atlanta, GA 30305 USA