

33,299 SF

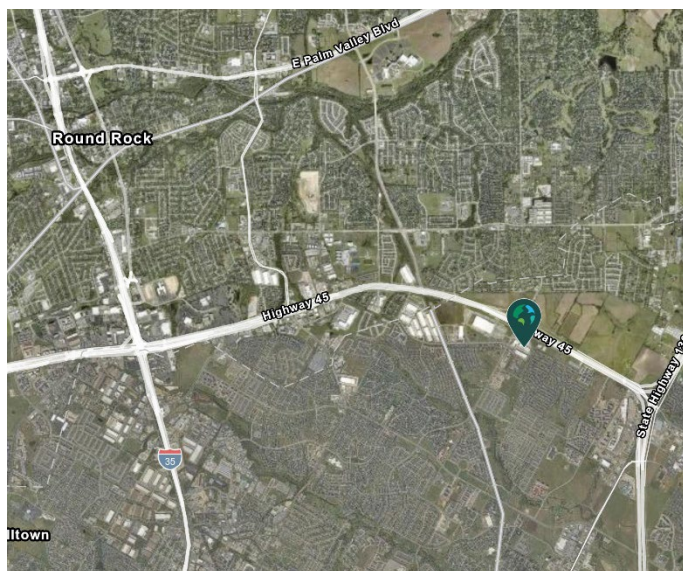
Industrial Space For Lease



Prologis Heatherwilde 45 Bldg 2



19025 Heatherwilde Blvd, Suite 100
Pflugerville, TX 78660 USA



LOCATION

- Located off the frontage road of SH 45 and Heatherwilde Blvd.
- Convenient to major employers: UPS, Living Spaces and BAE Systems
- Approximately 20 miles to Central Business District

FACILITY

- 33,299 sf available
- 24,641 sf office
- 28' clear height
- 50' x 52' column spacing
- 7 dock high doors, 2 with EOD levelers
- 1 drive-in door
- ESFR sprinkler system
- 100% HVAC
- Heavy power

ADVANTAGES AND AMENITIES

- End cap space
- Rear load configuration
- Access to the [Prologis Essentials](#) platform, which includes:
 - [Operations Essentials](#)
 - [Energy + Sustainability Essentials](#)
 - [Mobility Essentials](#)
 - [Workforce Essentials](#)

Your single-source service for efficient move-in and operations: [prologisessentials.com](https://www.prologisessentials.com)

33,299 SF

Industrial Space For Lease



Prologis Heatherwilde 45 Bldg 2



Live Oak

Ryan Whalen
rwhalen@liveoak.com
ph +1 512 472 5000
cell +1 512 803 9928
2725 Bee Cave Road
Austin, TX 78746 USA

Live Oak

Doug Thomas
doug@liveoak.com
ph +1 512 472 5000
cell +1 512 695 3985
2725 Bee Cave Road
Austin, TX 78746 USA

Live Oak

Dax Benkendorfer
dax@liveoak.com
ph +1 512 472 5000
cell +1 512 848 2581
2725 Bee Cave Road
Austin, TX 78746 USA

Prologis

Whitney Williamson
wwilliamson@prologis.com
ph +1 972 884 9244
cell +1 817 781 5186
600 Congress Avenue, Suite 14026
Austin, TX 78701 USA

