

198,466 SF

Industrial Space For Lease



Prologis Park 70 - Building #15

22905 E. 19th Avenue
Aurora, CO USA



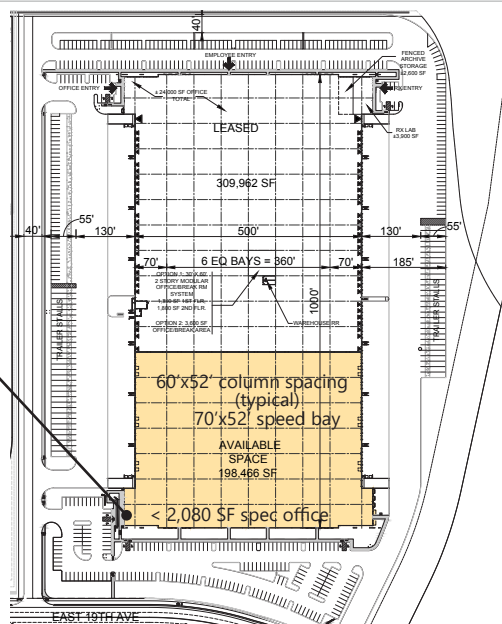
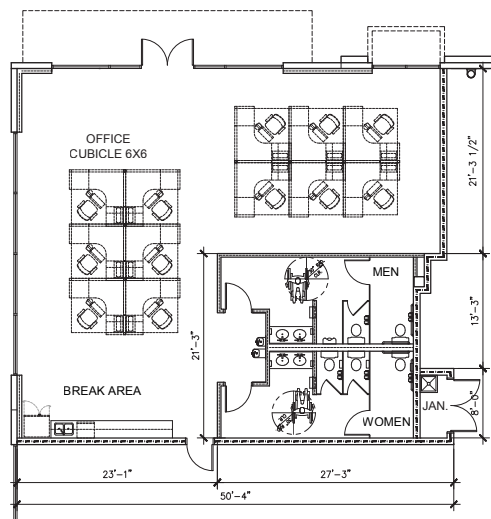
LOCATION

- Premier 5.7 million SF master planned bulk distribution park
- Located at the intersection of I-70 and E-470 with excellent visibility
- Minutes from Denver International Airport
- Excellent access to I-70, I-225, I-25 and E-470
- Prologis owned and operated
- Prologis Park 70 is home for GM Service Parts Distribution Center, Furniture Row, O'Reilly Auto Parts, US Foods, Niagara Bottling, Interline Brands and Master Craft

FEATURES

- 198,466 SF Speculative development for lease
- Divisible
- 34 dock-high doors; 2 drive-in doors
- 80 auto stalls; 30 trailer stalls
- 36' minimum clear
- 60'x52' column spacing (typical) 70'x52' speed bay
- 2,080 SF spec office
- Planned LEED Certification
- Energy efficient building features and design
- Building Nearing Completion
- Available now!

Industrial Space For Lease

**CBRE**

Executive Vice President

james.bolt@cbre.com

ph +1 720 528 6310

cell +1 303 960 6310

5455 Landmark Place

Suite C102

Greenwood Village, CO 80111 USA

Mike Camp, SIOR

Senior Vice President

mike.camp@cbre.com

ph +1 720 528 6313

cell +1 303 960 6313

5455 Landmark Place

Suite C102

Greenwood Village, CO 80111 USA

Prologis

Wayne Barrett

wbarrett@prologis.com

ph +1 303 567 5688

cell +1 720 320 1760

1800 Wazee Street

Suite 500

Denver, CO 80202 USA

No warranty or representation, expressed or implied, is made as to the accuracy of the information contained herein, and same is submitted subject to error and omissions.

www.prologis.com