

216,350 SF

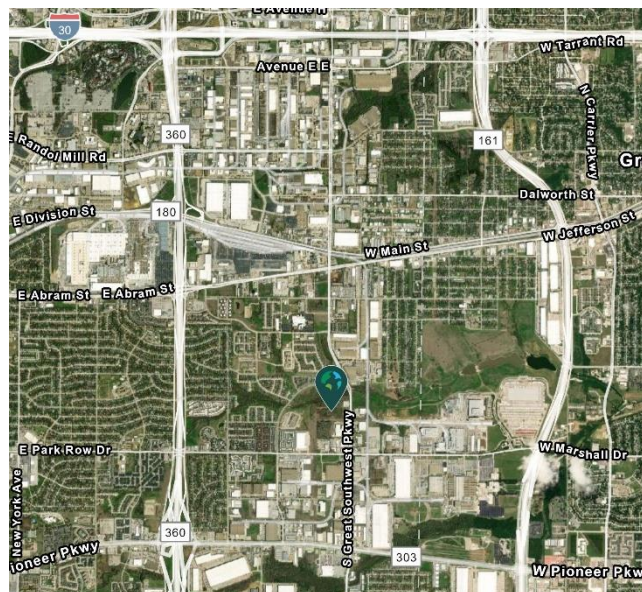
Industrial Space For Lease



Prologis Great Southwest



1400 S. Great Southwest Parkway
Grand Prairie, TX 75051 USA



LOCATION

- In the highly desirable Great Southwest industrial submarket with easy access to SH 360 and I-20

FACILITY

- 216,350 sf available
- Build-to-suit office
- 36' clear height
- 42 (9' x 10') overhead dock doors
- 2 (14' x 16') drive in doors
- ESFR sprinkler system

ADVANTAGES AND AMENITIES

- 176 auto spaces & 33 trailer spaces
- 130' truck court
- Access to the [Prologis Essentials](#) platform, which includes:
 - [Operations Essentials](#)
 - [Energy Essentials](#)
 - [Workforce Essentials](#)
 - [Transportation Essentials](#)
 - [Digital Essentials](#)

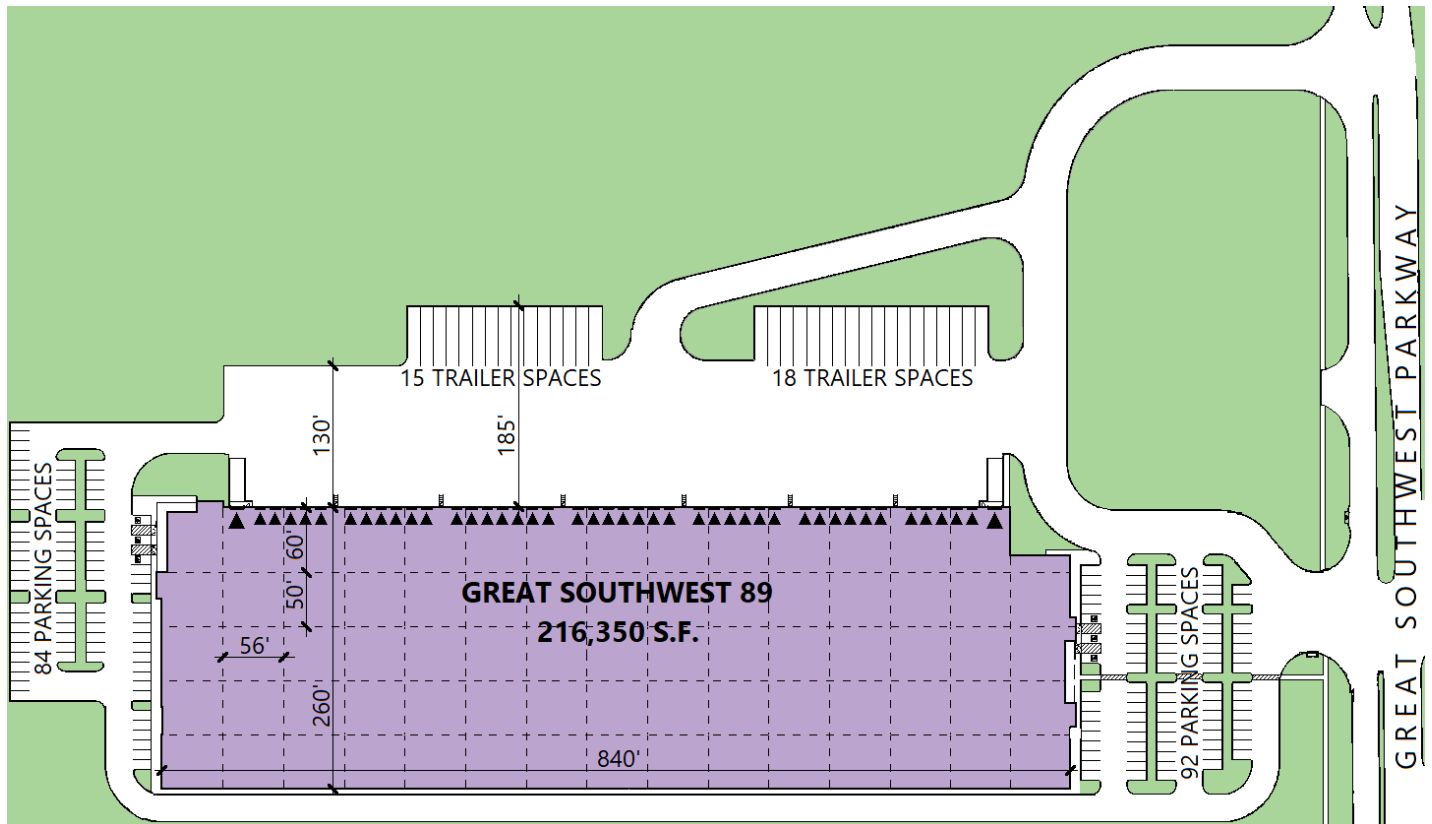
Prologis Essentials: your single-source service for efficient move-in and operations at prologisessentials.com

216,350 SF

Industrial Space For Lease



Prologis Great Southwest



Prologis

Ryan McNaughton
rmcnaughton@prologis.com
ph +1 972 884 9218
cell +1 214 673 9489
2021 McKinney Avenue
Suite 1050
Dallas, TX 75201 USA

Prologis Essentials: your single-source service for efficient move-in and operations at [prologisessentials.com](https://www.prologisessentials.com)

No warranty or representation, expressed or implied, is made as to the accuracy of the information contained herein, and same is submitted subject to error and omissions.