

10,318 SF

Industrial Space For Lease



Prologis Park Periferico Center 1



Periférico Sur Manuel Gómez Morín #7999 Guadalajara
JAL 45601

LOCATION

This 10,318 SF back office space warehouse is part of Prologis Park Periferico Center inside the Continental Building. The facility is strategically located in Periferico Sur, between Av. López Mateos and Colon. With easy access and public transportation.

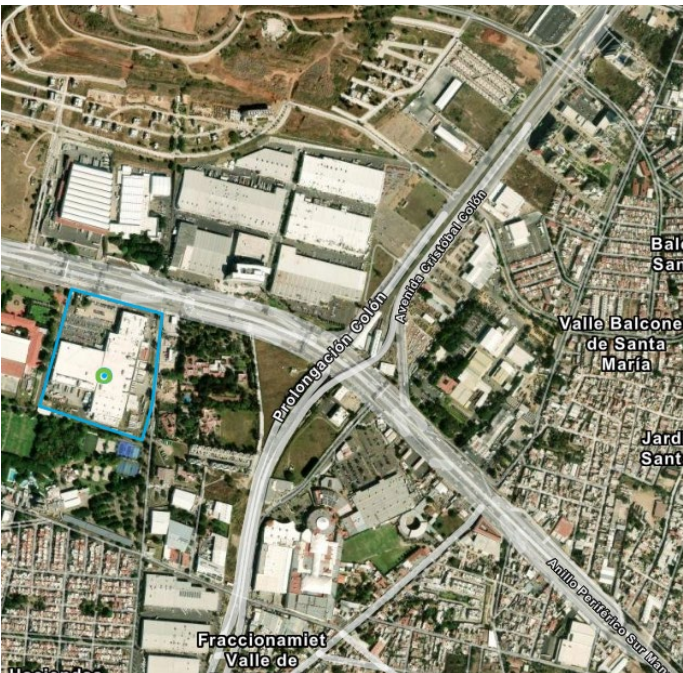
FACILITY

Fully equipped office space
Located in the second floor
Sprinklers
Parking space available

ADVANTAGES AND AMENITIES

The area is well-served by public transportation, with several bus routes and the Periférico Sur station of the Guadalajara light rail system in close proximity, facilitating convenient access for employees and visitor

Your single-source service for efficient move-in and operations: [prologisessentials.com](https://www.prologisessentials.com)

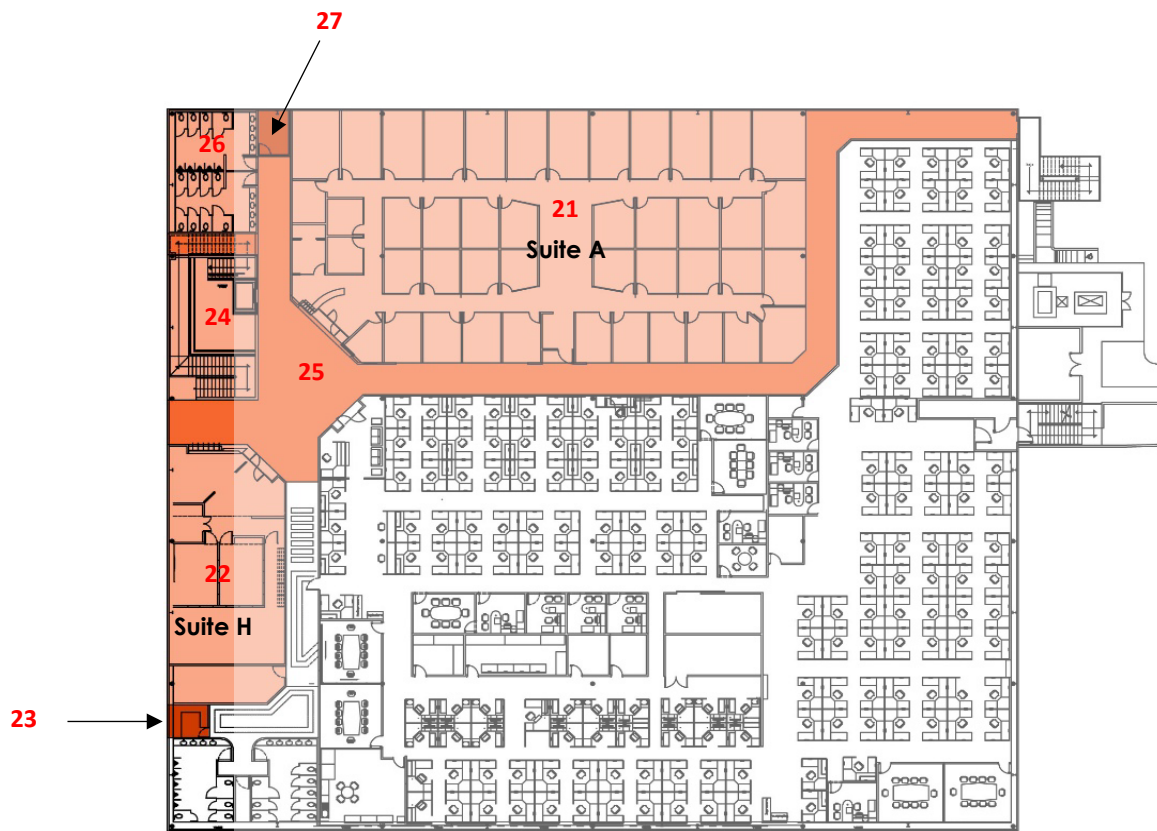


10,318 SF

Industrial Space For Lease



Prologis Park Periferico Center 1



2nd Floor Office

Prologis

Sandra Solis
VP Market Officer
sesolis@prologis.com

Prologis

Beatriz Baez
Leasing Manager
bbaez@prologis.com
ph +52 33 3134 5453