

# 7,575 SF

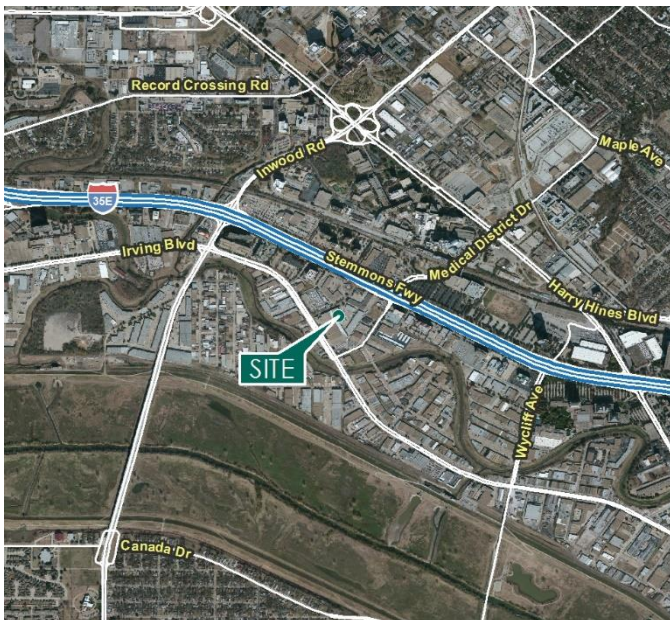
## Industrial Space For Lease



### Prologis Stemmons Circle



1212 Dolton Drive, Suite 302  
Dallas, TX 75207 USA



#### LOCATION

- Centrally located in South Stemmons industrial submarket
- Easy access to major highways including I-35E (0.3 mi.), I-30 (3.7 mi.), TX-183 (2 mi.) and TX-12 (4.7 mi.) and within nine minutes of Love Field Airport.

#### FACILITY

- 7,575 sf available
- 683 sf office
- 18' clear height
- 33' x 40' column spacing
- 1 (10' x 10") overhead dock door
- 1 (10' x 10") drive in ramp

#### ADVANTAGES AND AMENITIES

- Front load distribution
- Immediate proximity to Design District, Uptown and Downtown Dallas
- Access to the [Prologis Essentials](#) platform, which includes:
  - [Operations Essentials](#)
  - [Energy Essentials](#)
  - [Transportation Essentials](#)

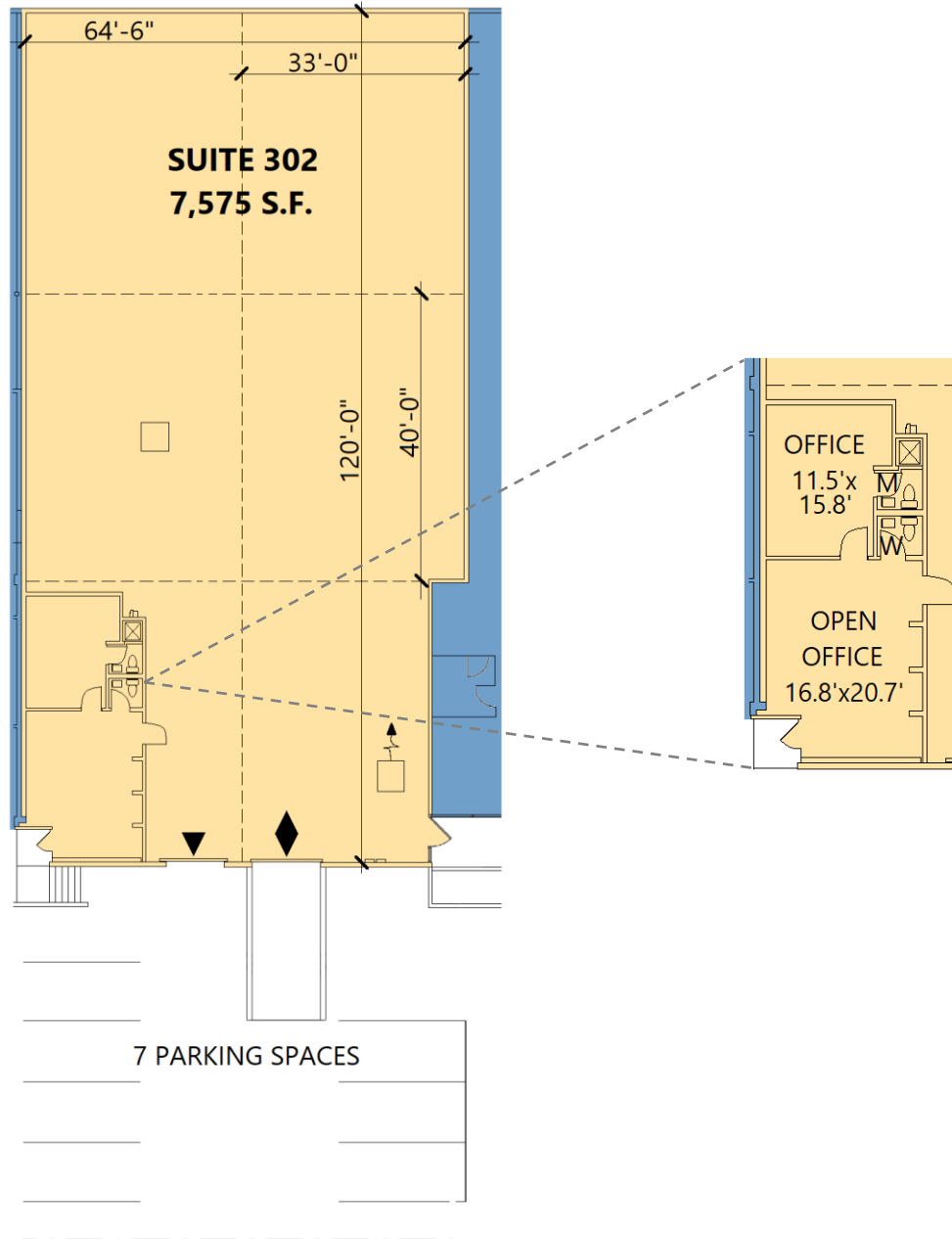
Prologis Essentials: your single-source service for efficient move-in and operations at [prologisessentials.com](https://prologisessentials.com)

# 7,575 SF

Industrial Space For Lease



## Prologis Stemmons Circle



### Lee & Associates

Adam Graham, SIOR, CCIM  
agraham@lee-associates.com  
ph +1 972 934 4011  
cell +1 214 335 3320  
14950 Quorum Drive  
Suite 100  
Dallas, TX 75254 USA

### Lee & Associates

Stephen Williamson  
swilliamson@lee-associates.com  
ph +1 972 934 4045  
cell +1 817 705 5470  
14950 Quorum Drive  
Suite 100  
Dallas, TX 75254 USA

### Prologis

Sal Giunta  
sg Giunta@prologis.com  
ph +1 972 884 9247  
cell +1 970 443 7574  
2021 McKinney Avenue  
Suite 1050  
Dallas, TX 75201 USA

**Prologis Essentials: your single-source service for efficient move-in and operations at [prologisessentials.com](https://prologisessentials.com)**

No warranty or representation, expressed or implied, is made as to the accuracy of the information contained herein, and same is submitted subject to error and omissions.