

11,740 SF

Showroom/Warehouse Space For Lease



CALL FOR RATES



Northwest Corporate Park, Building 11

3621 NW Yeon Avenue, Portland, OR 97210



LOCATION

- Northwest Corporate Park is an 888,000 SF industrial park and is the largest in the Northwest Portland/ Guild's Lake area. The Park includes support services such as restaurants and a major bank. Located on Yeon Avenue with easy access to major freeways and the downtown core area.

FACILITY

- 11,740 SF of showroom/warehouse fronting NW Yeon Avenue. The 7,379 SF office/showroom is loaded with natural light and high ceilings. The office area includes 4 private offices. The warehouse totals 4,326 SF. has 4 drive-in grade doors, LED lighting, and is fully sprinklered.

ADVANTAGES AND AMENITIES

- Full glass line on building front for naturally lit showroom
- Direct access and visibility to high traffic NW Yeon Avenue
- Ample parking directly adjacent to showroom space

11,740 SF

Showroom/Warehouse Space For Lease

CALL FOR RATES

Broker

Todd Collins

todd@macadamforbes.com

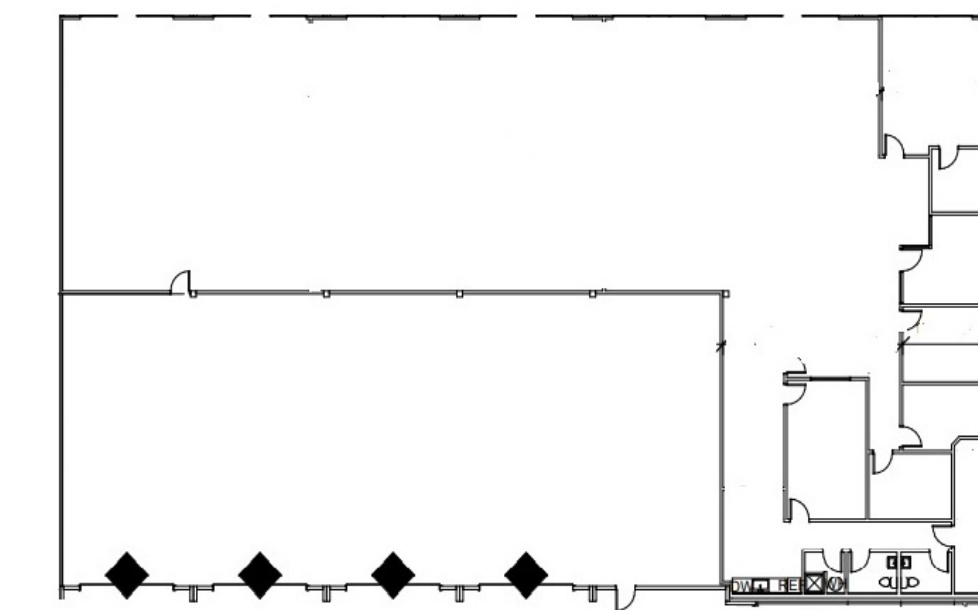
ph +1 503 972 7283


Broker

Joe Curran

jcurran@macadamforbes.com

ph +1 503 972 7283



 OFFICE PLAN - FIRST FLOOR
NTS

NORTHWEST CORPORATE PARK

BUILDING 11
3621 NW YEON AVE PORTLAND, OR, 97210

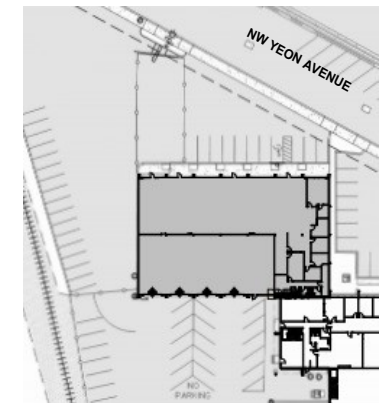


TENANT DATA

AVAILABLE FOOTPRINT:	11,740 SF
OFFICE AREA:	7,379 SF

LEGEND

- ▼ DOCK HIGH OVERHEAD DOOR
- ◆ DRIVE IN OVERHEAD DOOR



 OVERALL BUILDING 11
NTS