

# PARK 100

INDIANAPOLIS, IN

## BUILDING 35

5850 W. 80TH STREET

### LEASE DATA

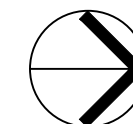
SUITE 5850	
OFFICE	4,333 SF
MEZZANINE	2,860 SF
WAREHOUSE	55,807 SF
<b>TOTAL LEASE AREA</b>	<b>63,000 SF</b>

### BUILDING FEATURES

- 21' CLEAR HEIGHT
- 40'X36' TYPICAL BAY SPACING
- (6) 8'X8' O.H. RAIL DOOR WITH MECHANICAL LEVELERS
- (2) 8'X10' RAIL DOOR WITH MECHANICAL LEVELERS
- (3) 10'X10' O.H. RAIL DOORS
- (1) 7'X8' O.H. DOOR WITH RAMP
- (1) 12'X14' O.H. DOOR WITH RAMP
- FULLY SPRINKLERED
- RAIL SERVED
- 119 AUTO PARKING SPACES (EXPANDABLE)
- SKYLIGHTS THROUGHOUT:

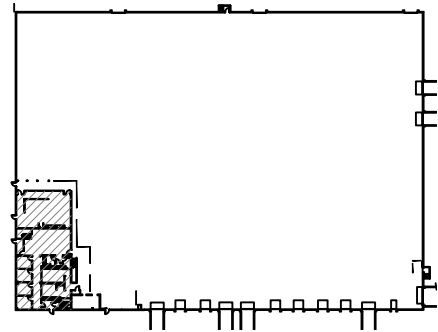


8888 KEYSTONE CROSSING, SUITE 570  
INDIANAPOLIS, IN 46240  
PHONE: (317) 228.6200

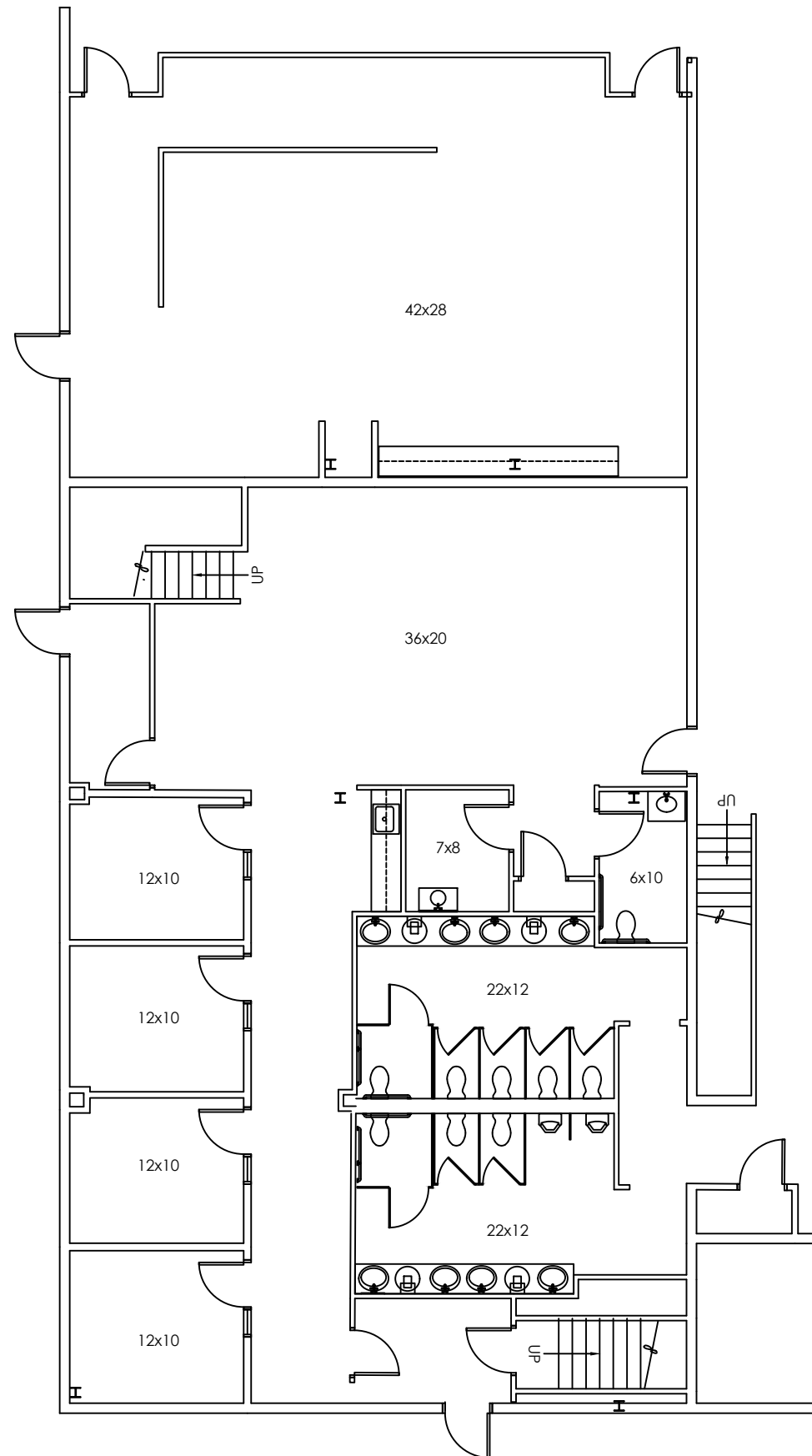


www.schottdesign.com

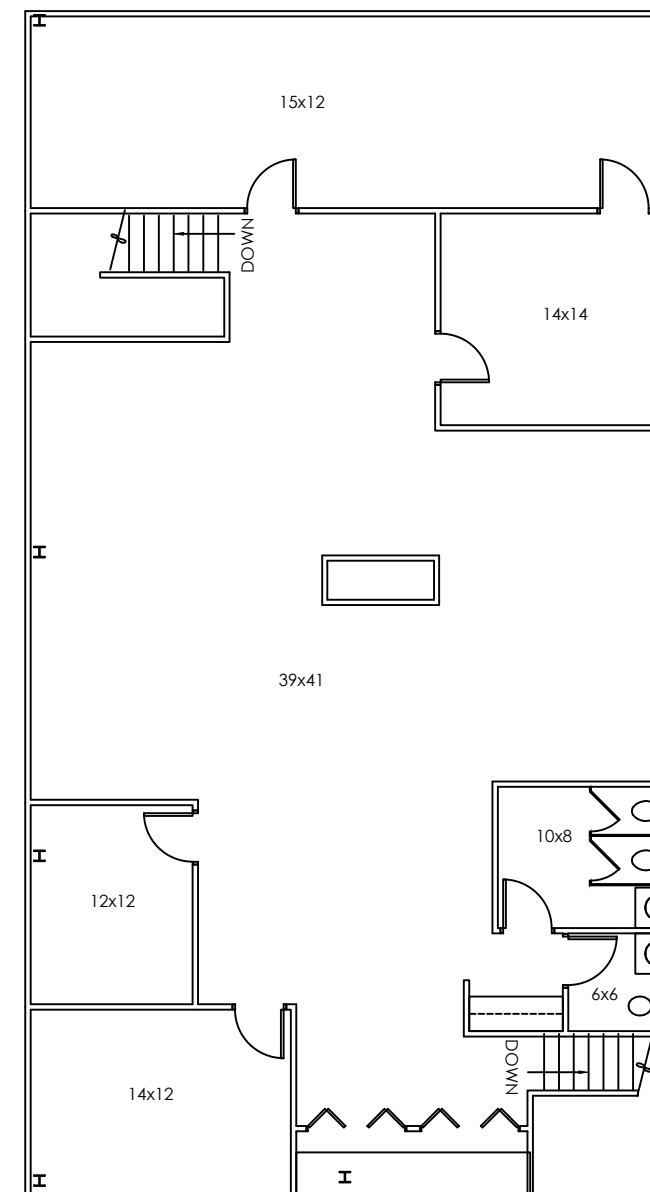
DATE: 07.13.21



KEY PLAN  
NOT TO SCALE



SUITE 5850 - OFFICE PLAN  
NOT TO SCALE



SUITE 5850 - MEZZANINE PLAN  
NOT TO SCALE