



SUITE 100:	17,054 S.F.
OFFICE:	1,864 S.F.
MEZZANINE:	1,608 S.F.
WAREHOUSE:	13,582 S.F.

PERCENTAGE OFFICE:	20.4%
CLEAR HEIGHT:	22'-0"
DOCK-HIGH DOORS:	3
DRIVE-IN DOORS:	0

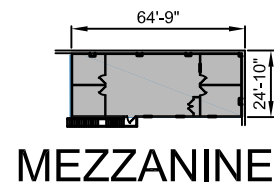
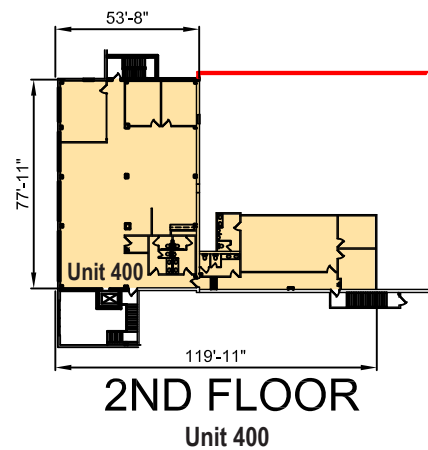
SUITE 300:	29,209 S.F.
OFFICE:	4,341 S.F.
MEZZANINE:	N/A
WAREHOUSE:	24,868 S.F.

PERCENTAGE OFFICE:	14.9%
CLEAR HEIGHT:	11'-0" & 22'-0"
DOCK-HIGH DOORS:	3
DRIVE-IN DOORS:	2

SUITE 400:	19,594 S.F.
OFFICE:	N/A
2ND FLOOR:	5,944 S.F.
WAREHOUSE:	12,920 S.F.
COMMON AREA:	730 S.F.
PERCENTAGE OFFICE:	28.8%
CLEAR HEIGHT:	19'-0"
DOCK-HIGH DOORS:	2
DRIVE-IN DOORS:	0

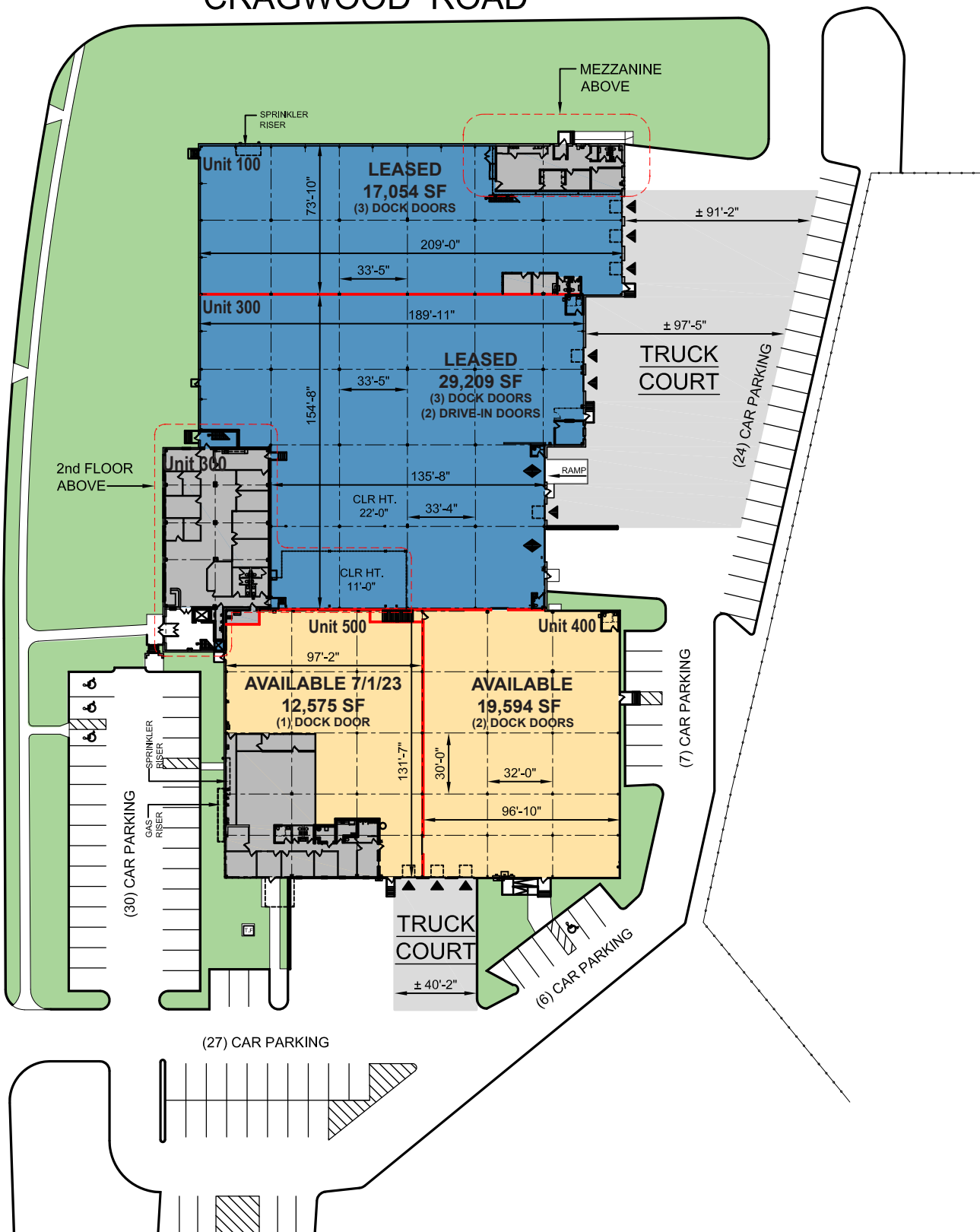
SUITE 500:	12,575 S.F.
OFFICE:	4,071 S.F.
MEZZANINE:	N/A
WAREHOUSE:	8,504 S.F.

PERCENTAGE OFFICE:	32.4%
CLEAR HEIGHT:	19'-0"
DOCK-HIGH DOORS:	1
DRIVE-IN DOORS:	0



RANDOLPH AVENUE

CRAGWOOD ROAD



PROLOGIS

2323 RANDOLPH AVE
AVENEL, NEW JERSEY 07001

TOTAL FOOTPRINT:	78,432 S.F.
OFFICE:	10,276 S.F.
MEZZANINE:	1,608 S.F.
2F OFFICE:	5,944 S.F.
WAREHOUSE:	59,874 S.F.
COMMON AREA:	730 S.F.
PERCENTAGE OFFICE:	22.7%
CLEAR HEIGHT:	11'-0", 19'-0", 22'-0"
PARKING:	94 STALLS
DOCK-HIGH DOORS:	9
DRIVE-IN DOORS:	2
TYPICAL BAY:	30'-0" x 32'-0"

