

5,000 SF

Industrial Space For Lease



Prologis Park Trans-Pacific 5



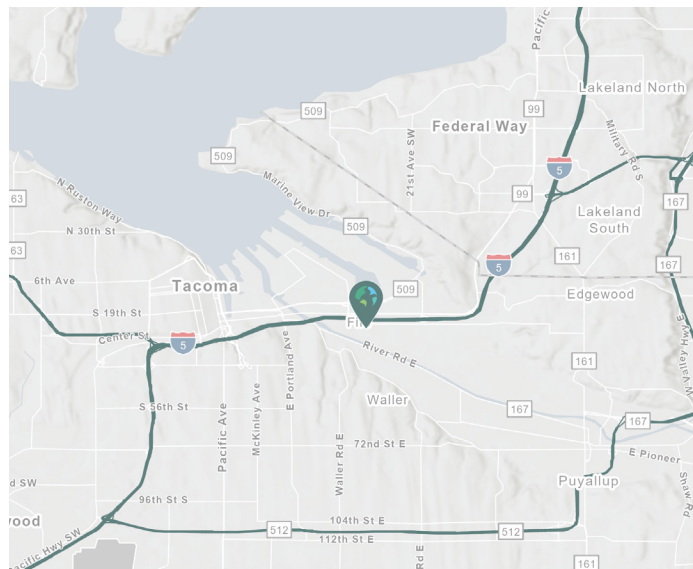
3501-A2 Industry Drive East
Fife, WA 98390 USA

LOCATION

- Located between exit 136 and exit 137 on Interstate 5
- Three miles to the Port of Tacoma main gate
- No City of Fife B&O taxes

FACILITY

- Shell space: 5,000 SF
- Warehouse space: 4,950 SF
- Office space: 50 SF
- Clear height: 24'
- Dock doors: 5 (3 levelers)
- Grade Level doors: 1
- Available Now



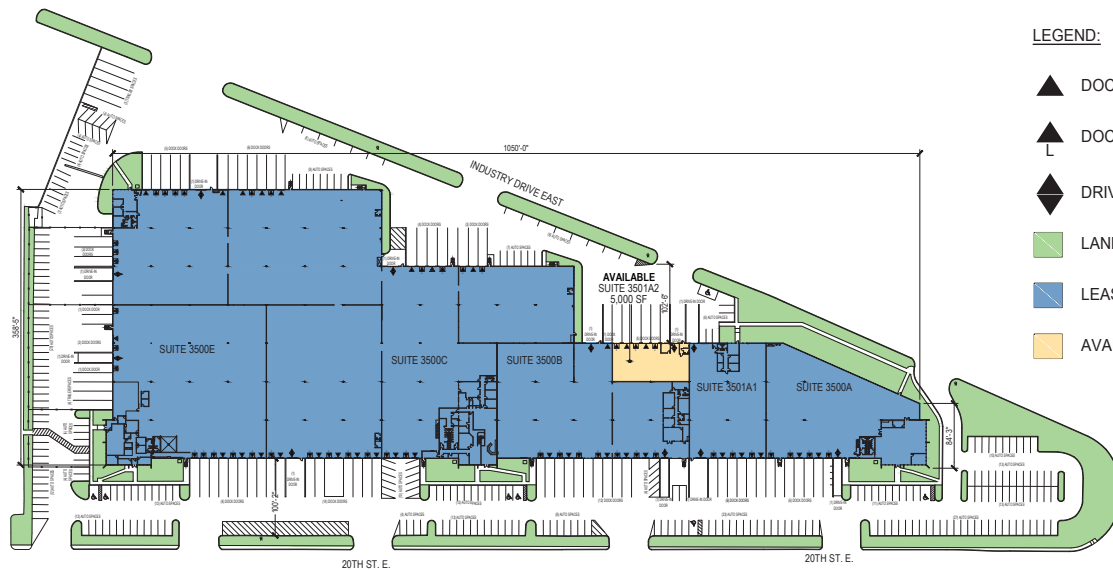
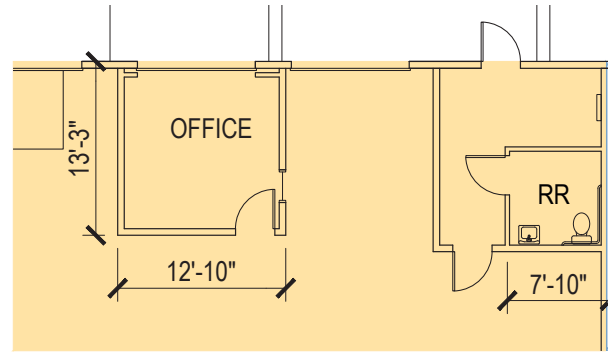
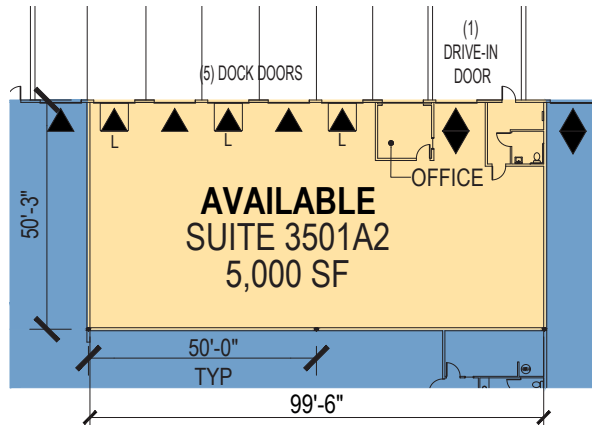
**Your single-source service for efficient move-in
and operations: [prologisessentials.com](https://www.prologisessentials.com)**

5,000 SF

Industrial Space For Lease



Prologis Park Trans-Pacific 5



LEGEND:

- ▲ DOCK DOOR
- ▲ DOCK DOORS W/ LEVELERS
- ◆ DRIVE-IN DOOR
- LAND
- LEASED AREA
- AVAILABLE AREA

CBRE

CBRE, Inc.

Monte Decker, CCIM
monte.decker@cbre.com
ph +1 253 596 0041
1201 Pacific Avenue
Suite 1502
Tacoma, WA 98402 USA

Prologis

Kimberly Nemethy
knemethy@prologis.com
ph +1 206 414 7616
33930 Weyerhaeuser Way S
Suite 100
Federal Way, WA 98001 USA