

53,987 SF

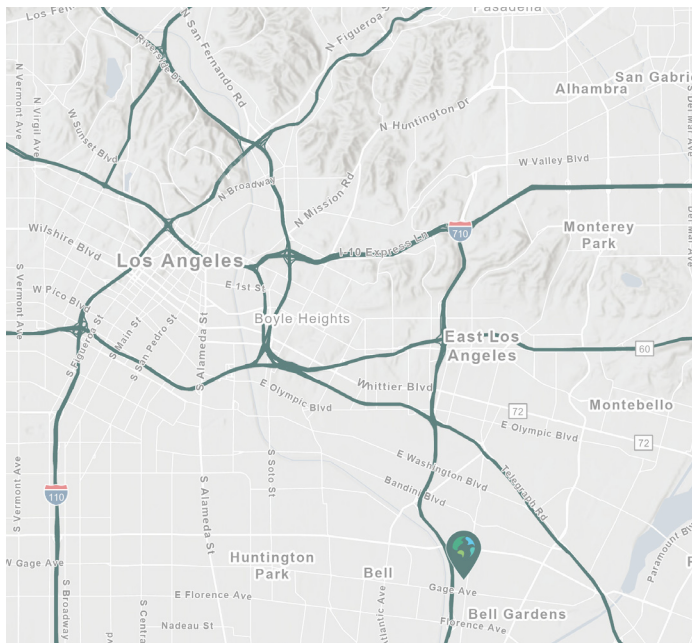
Industrial Space For Lease



Prologis Commerce Business Park



5650-5668 E. 61st Street
Commerce, CA 90040 USA



LOCATION

- Corner Location
- Major Street Frontage
- Excellent Access to Major Freeways (710, 5, & 10) and Downtown Los Angeles
- Approximately 20 Miles to Ports of Los Angeles & Long Beach

FACILITY

- 53,987 SF Building
- 53,987 SF Available (Divisible to 27,072 SF & 26,915 SF)
- 8,880 SF 2-Story Office Space (Two Pods of 4,440 SF)
- 28' Clearance
- 8 Dock High Positions
- ESFR Sprinklers - K17
- 800 Amps, 277/480 Volts

ADVANTAGES AND AMENITIES

- Prologis Park Environment

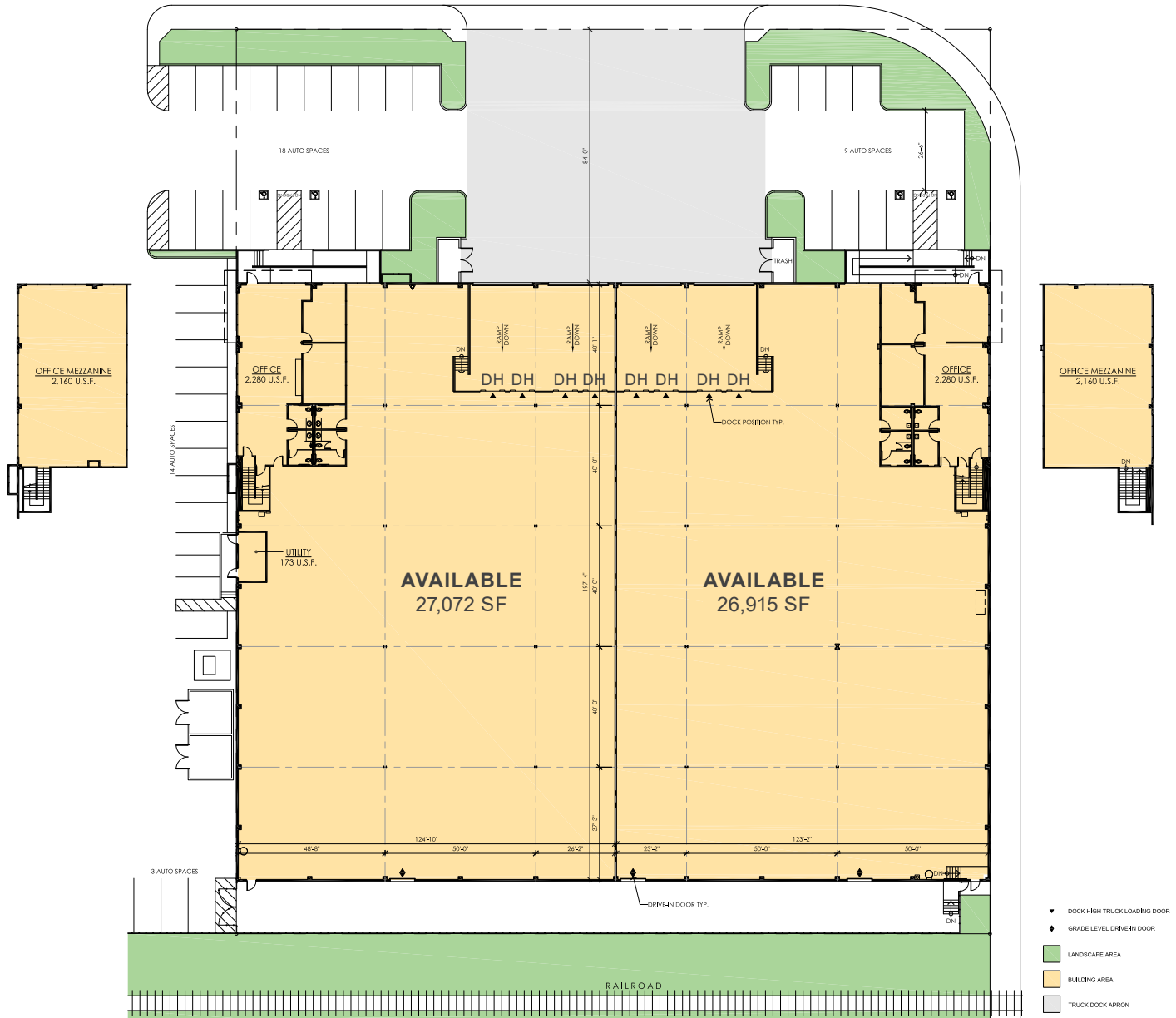
Your single-source service for efficient move-in and operations: [prologisessentials.com](https://www.prologisessentials.com)

53,987 SF

Industrial Space For Lease



Prologis Commerce Business Park



NEWMARK

NOT TO SCALE

Newmark

John McMillan
john.mcmillan@nrmk.com
CalDRE License #01103292
ph +1 310 491 2048
2301 Rosecrans Avenue
Suite 4100
El Segundo, CA 90245 USA

Newmark

Jeff Sanita
jeff.sanita@nrmk.com
CalDRE License #01242202
ph +1 310 491 2003
2301 Rosecrans Avenue
Suite 4100
El Segundo, CA 90245 USA

Newmark

Joey Farney
joey.farney@nrmk.com
CalDRE License #02218932
ph +1 310 491 2007
2301 Rosecrans Avenue
Suite 4100
El Segundo, CA 90245 USA

Newmark

Andrew Conroy
andrew.conroy@nrmk.com
CalDRE License #02143325
ph +1 310 491 2085
2301 Rosecrans Avenue
Suite 4100
El Segundo, CA 90245 USA

Prologis

Analise Guttman
aguttman@prologis.com
CalDRE License #01966053
ph +1 562 345 9239
2141 Rosecrans Avenue
Suite 1151
El Segundo, CA 90245 USA

Corporate License #01355491

The distributor of this communication is performing acts for which a real estate license is required. The information contained herein has been obtained from sources deemed reliable but has not been verified and no guarantee, warranty or representation, either express or implied, is made with respect to such information. Terms of sale or lease and availability are subject to change or withdrawal without notice. No warranty or representation, expressed or implied, is made as to the accuracy of the information contained herein, and same is submitted subject to error and omissions.