

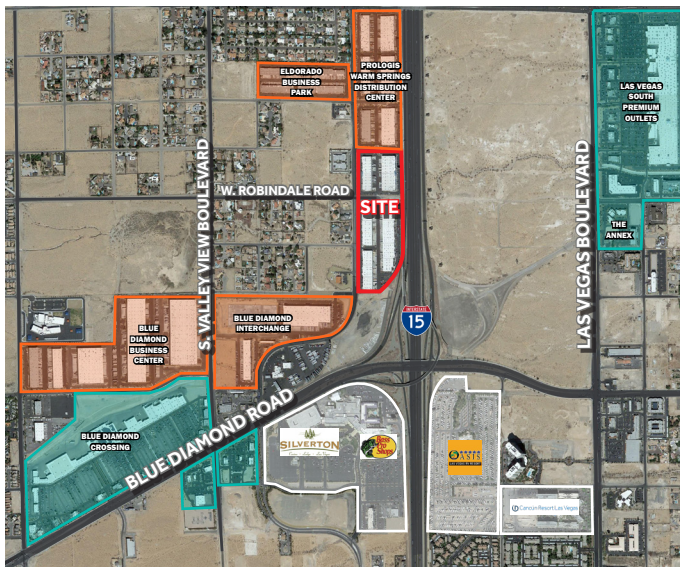
±12,651 SF

Industrial Space For Lease



Prologis Safari Business Park Building A

7650 S. Dean Martin Drive, Suite 106
Las Vegas, NV 89139 USA



LOCATION

- Close proximity to Blue Diamond Road entrance/exit ramps off of the I-15 freeway and the I-15/I-215 Interchange
- Located in the southwest industrial submarket, with convenient access to McCarran International Airport, Allegiant Stadium and the "Las Vegas Strip."
- Zoned: MD, Designed Manufacturing (CC Jurisdiction)

FACILITY

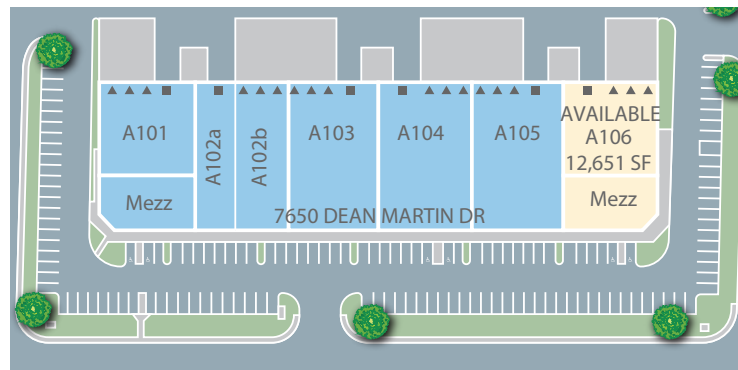
- Total Available Square Footage - ±12,651 SF
- ±4,875 SF First Floor Office Space
- ±2,565 SF Mezzanine Office
- Three (3) Dock High Loading Doors
- One (1) grade Level Door
- ESFR Fire Sprinkler System
- ±24' Minimum Clear Height

ADVANTAGES AND AMENITIES

- Near an abundance of restaurants, service amenities and industrial owner/users and manufacturing/distribution facilities.

±12,651 SF

Industrial Space For Lease



C&W - Nick Abraham
Senior Associate
nick.abraham@cushwake.com
ph +1 702 605 1620
Lic. S.0176348
6725 Via Austi Parkway
Suite 275
Las Vegas, NV 89119 USA

C&W - Greg Tassi, SIOR
Executive Managing Director
greg.tassi@cushwake.com
ph +1 702 605 1713
Lic. S.0056472
6725 Via Austi Parkway
Suite 275
Las Vegas, NV 89119 USA

Prologis - Lisa Brady
VP - Market Officer
lbrady@prologis.com
ph +1 702 891 9141
Lic. B.1002217
3800 Howard Hughes Parkway
Suite 1250
Las Vegas, NV 89169 USA

Prologis - Mathias Hughes
VP - Investment Officer
mhughes@prologis.com
ph +1 775 829 3035
Lic. S.0073128
3800 Howard Hughes Parkway
Suite 1250
Las Vegas, NV 89169 USA

No warranty or representation, expressed or implied, is made as to the accuracy of the information contained herein, and same is submitted subject to error and omissions.

www.prologis.com

www.cushmanwakefield.com

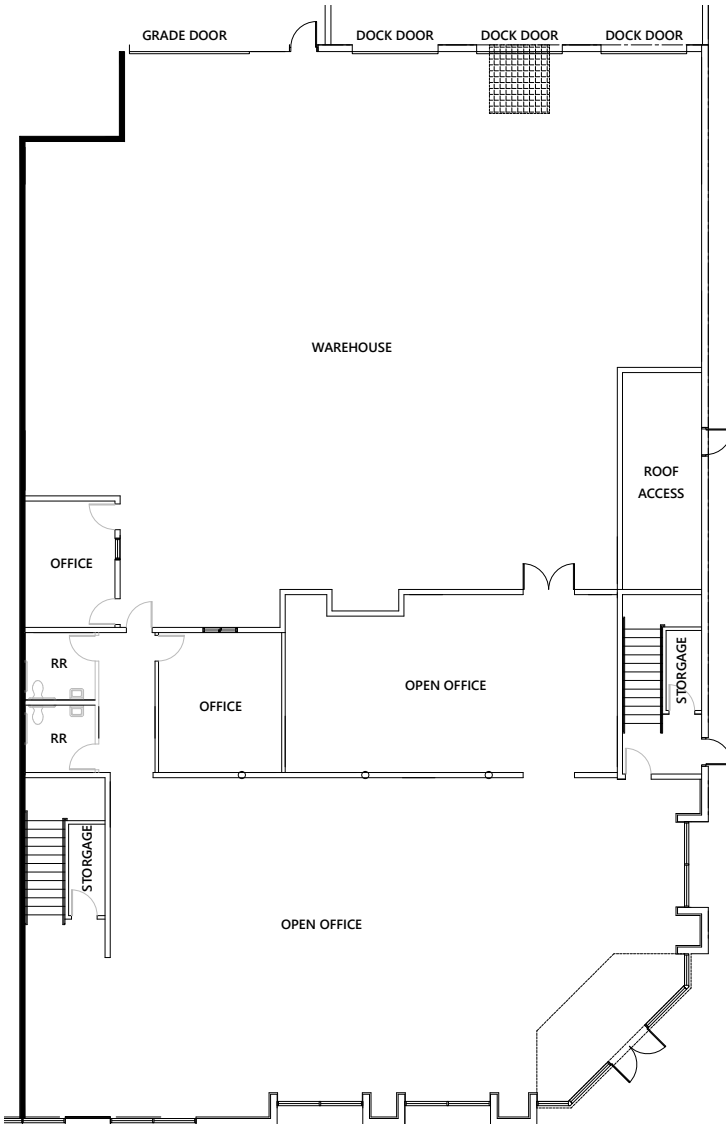
© 2021 Cushman & Wakefield U.S., Inc. All rights reserved. This information has been obtained from sources believed reliable, but has not been verified for accuracy or completeness. You should conduct a careful, independent investigation of the property and verify all information. Any reliance on this information is solely at your own risk. Cushman & Wakefield U.S., Inc. and the C&W logo are service marks of Cushman & Wakefield U.S., Inc. All other marks displayed on this document are the property of their respective owners. Photos herein are the property of their respective owners. Use of these images without the express written consent of the owner is prohibited.

±12,651 SF

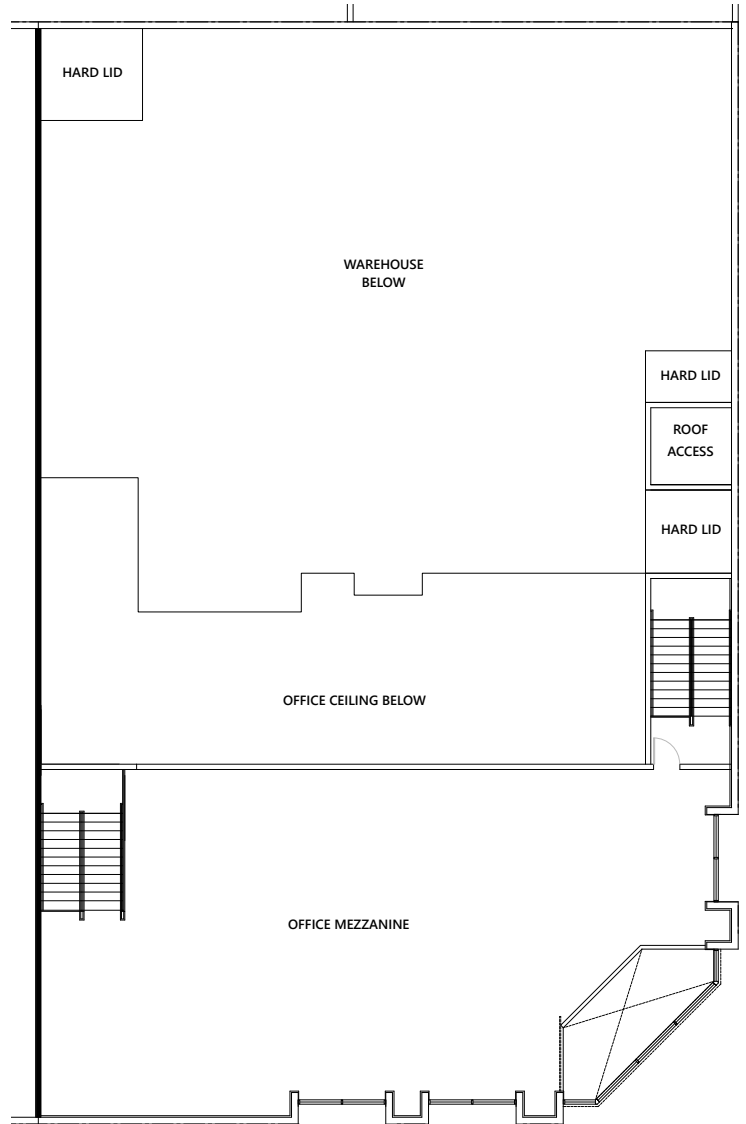
Industrial Space For Lease



FIRST FLOOR LAYOUT



MEZZANINE OFFICE LAYOUT



C&W - Nick Abraham
Senior Associate
nick.abraham@cushwake.com
ph +1 702 605 1620
Lic. S.0176348
6725 Via Austi Parkway
Suite 275
Las Vegas, NV 89119 USA

C&W - Greg Tassi, SIOR
Executive Managing Director
greg.tassi@cushwake.com
ph +1 702 605 1713
Lic. S.0056472
6725 Via Austi Parkway
Suite 275
Las Vegas, NV 89119 USA

Prologis - Lisa Brady
VP - Market Officer
lbrady@prologis.com
ph +1 702 891 9141
Lic. B.1002217
3800 Howard Hughes Parkway
Suite 1250
Las Vegas, NV 89169 USA

Prologis - Mathias Hughes
VP - Investment Officer
mhughes@prologis.com
ph +1 775 829 3035
Lic. S.0073128
3800 Howard Hughes Parkway
Suite 1250
Las Vegas, NV 89169 USA

No warranty or representation, expressed or implied, is made as to the accuracy of the information contained herein, and same is submitted subject to error and omissions.

www.prologis.com

www.cushmanwakefield.com

© 2021 Cushman & Wakefield U.S., Inc. All rights reserved. This information has been obtained from sources believed reliable, but has not been verified for accuracy or completeness. You should conduct a careful, independent investigation of the property and verify all information. Any reliance on this information is solely at your own risk. Cushman & Wakefield U.S., Inc. and the C&W logo are service marks of Cushman & Wakefield U.S., Inc. All other marks displayed on this document are the property of their respective owners. Photos herein are the property of their respective owners. Use of these images without the express written consent of the owner is prohibited.