

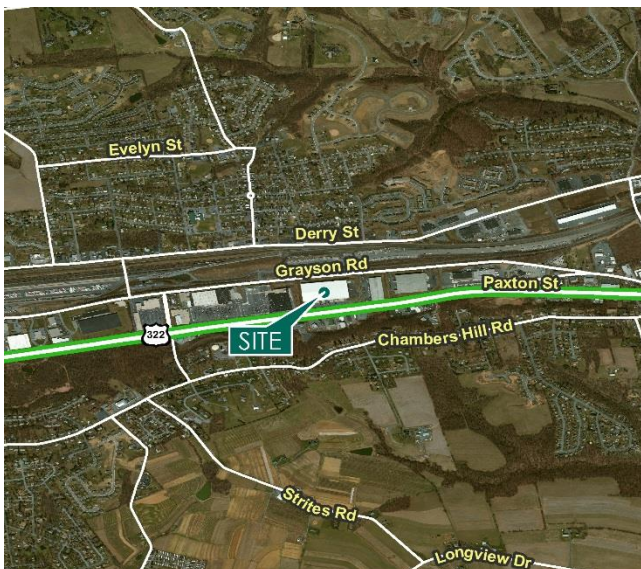
300,000 SF

Industrial Space For Lease



Prologis Harrisburg

7125 Grayson Road
Harrisburg, PA 17111 USA



LOCATION

- Strategically located along Route 322, the property is easily accessible from I-83 and the Pennsylvania Turnpike (I-76) via I-283.
- Nearby major parcel hubs (UPS, FedEx) and the Rutherford Intermodal yard

FACILITY

- 300,000 SF for lease
- 8,696 +/- of office in three locations
- 750' x 400' building
- 28' clear height
- 32 dock doors
- 148' truck court
- 50' x 50' typical column spacing
- 170 car stalls
- LED lighting
- ESFR sprinkler system

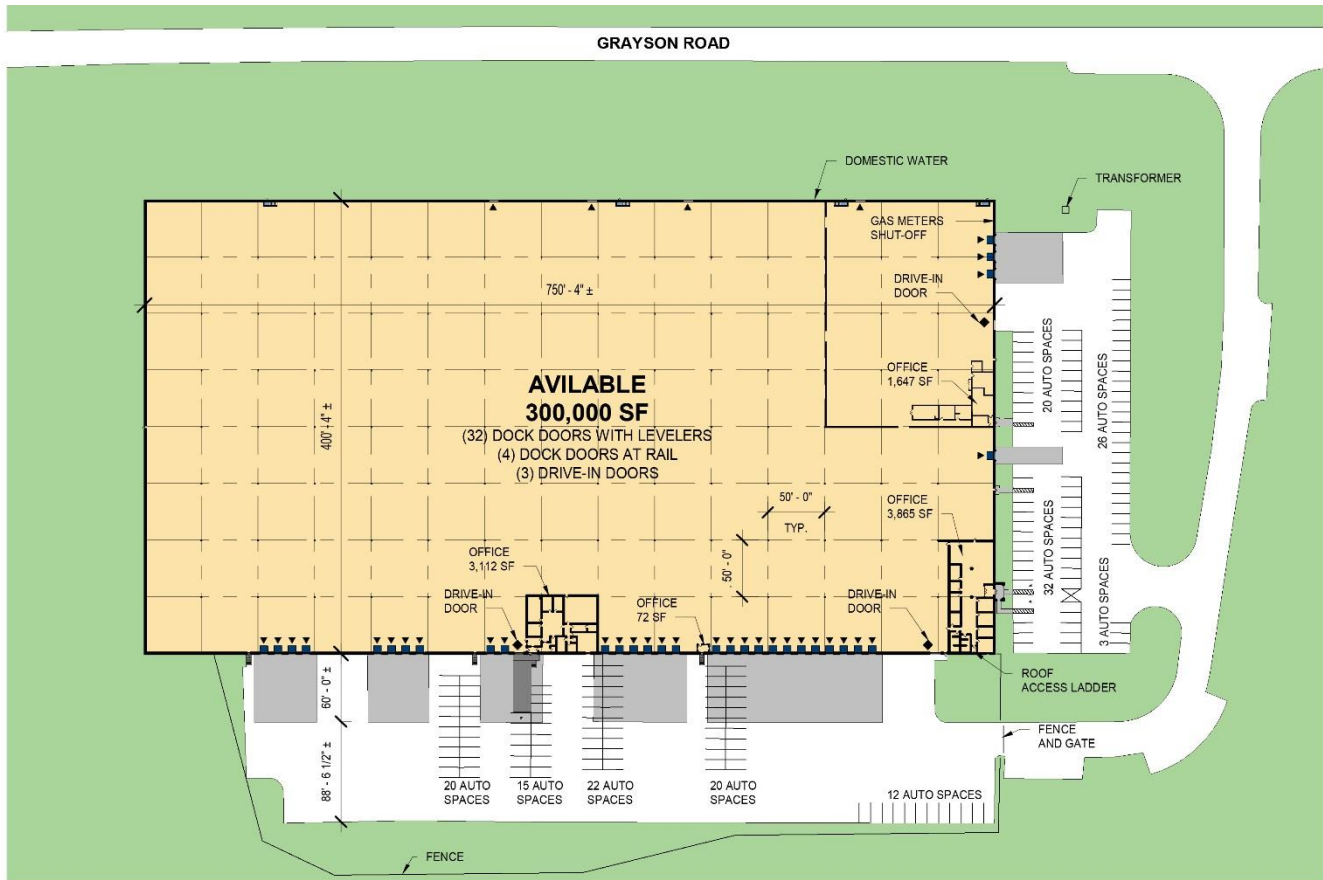
ADVANTAGES AND AMENITIES

- Exceptional transportation infrastructure
- Rt. 322/Paxton Street visibility
- Proximity to urban workforce
- Fenced lot

[Virtual Tour](#)

300,000 SF

Industrial Space For Lease



NOTE: THIS CONCEPTUAL PLAN IS FOR MARKETING PURPOSES ONLY AND HAS BEEN PREPARED BASED ON PRELIMINARY AVAILABLE SITE INFORMATION DEEMED RELIABLE. ALL DIMENSION AREA CALCULATIONS ARE SUBJECT TO VERIFICATION BY A PROFESSIONAL ENGINEER FOR COMPLIANCE WITH ALL FEDERAL, STATE, AND LOCAL REGULATIONS.

LEGEND

- ▲ DOCK POSITION W/ LEVELER
- ▲ DOCK POSITION AT RAIL
- ◆ DRIVE-IN DOOR
- LAND
- LEASED AREA
- AVAILABLE AREA



Lee & Associates of Eastern Pennsylvania

Ed Skonecki
eskonecki@lee-associates.com
ph +1 717 562 0901
cell +1 717 576 7555
4550 Lena Drive
Suite 104
Mechanicsburg, PA 17055 USA

Lee & Associates of Eastern Pennsylvania

Joel Kreider, SIOR
jkreider@lee-associates.com
ph +1 717 208 8647
cell +1 724 601 4493
4550 Lena Drive
Suite 104
Mechanicsburg, PA 17055 USA

Lee & Associates of Eastern Pennsylvania

John Van Buskirk, SIOR
jvanbuskirk@lee-associates.com
ph +1 717 208 8671
cell +1 717 497 1276
4550 Lena Drive
Suite 104
Mechanicsburg, PA 17055 US

Prologis

Meg Buffington
mbuffington@prologis.com
ph +1 717 790 5102
cell +1 717 919 3478
4900 Ritter Road
Suite 150
Mechanicsburg, PA 17055 USA