

# Up to 49,680 SF

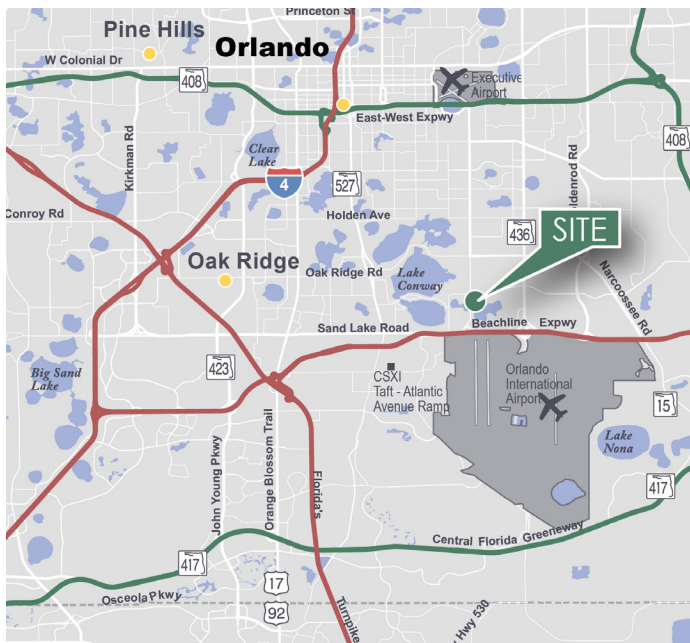
Industrial Space For Lease



## Prologis Airport DC North



6843 S. Conway Road  
Orlando, FL 32812 USA



### LOCATION

- One mile to the Beachline Expressway (SR 528) and Sand Lake Road
- One mile to Orlando International Airport
- Five miles to Florida's Turnpike

### FACILITY

- 101,747 SF building
- Rear loading
- 30' clear height
- 165' building depth
- 40' x 50' column spacing (typical)
- 50' x 50' speed bay
- 180' shared truck court w/60' concrete pad
- 1.18 / 1,000 SF parking
- LED lighting in office and warehouse
- ESFR sprinkler system
- Nitel fiber internet
- Duke Energy electrical service

### SUITE 120

- 16,560 SF available
- 1,656 SF of office
- Seven dock doors
- Available Q1 2025

### SUITE 140

- 33,120 SF available
- 1,783 SF of office
- 15 dock doors

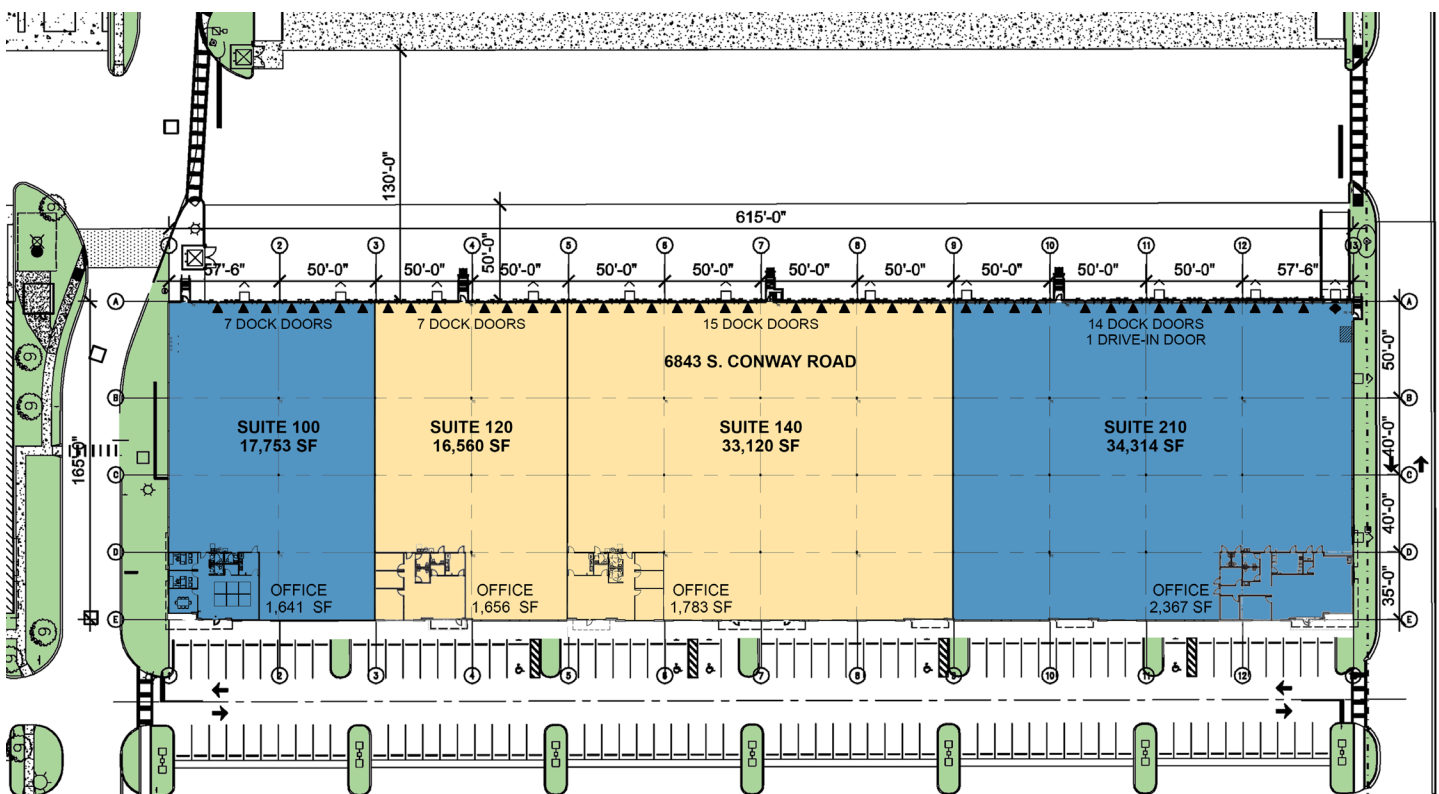
Your single-source service for efficient move-in and operations: [prologisessentials.com](http://prologisessentials.com)

# Up to 49,680 SF

Industrial Space For Lease



## Prologis Airport DC North



- LEGEND**
- AVAILABLE
  - LEASED
  - DOCK DOOR
  - DRIVE-IN DOOR



COMMERCIAL REAL ESTATE SERVICES

### Lee & Associates

William "Bo" Bradford, SIOR, CCIM  
bbradford@lee-associates.com  
+1 321.281.8502 phone  
1017 E. South Street  
Orlando, FL 32801 USA

### Lee & Associates

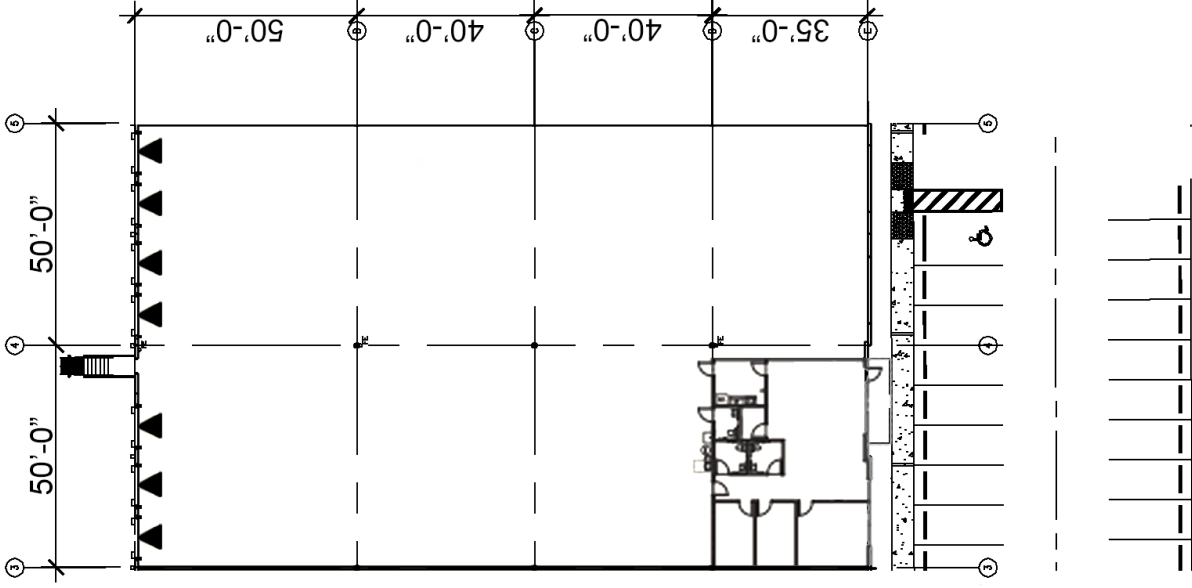
Tim Perry, SIOR, CCIM  
tperry@lee-associates.com  
+1 321.281.8515 phone  
1017 E. South Street  
Orlando, FL 32801 USA



Prologis Airport DC North  
6843 S. Conway Road, Suite 120  
Orlando, FL 32812 USA

OFFICE: 1,656 SF  
WAREHOUSE: 14,904 SF  
TOTAL: 16,560 SF

DOCK DOORS: 7





Prologis Airport DC North  
6843 S. Conway Road, Suite 140  
Orlando, FL 32812 USA

OFFICE: 1,783 SF  
WAREHOUSE: 31,337 SF  
TOTAL: 33,120 SF

DOCK DOORS: 15

