

# 44,360 SF

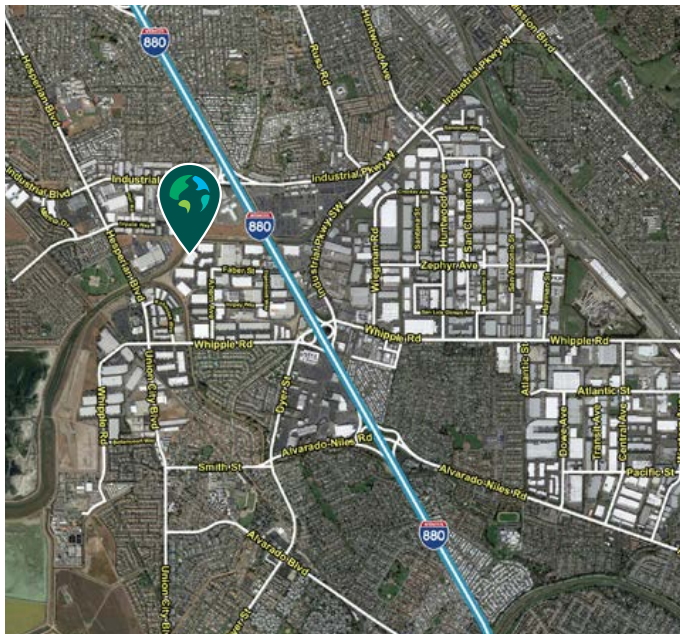
Industrial Space For Lease



## Prologis Union City 3 | 29987 Ahern Ave.



29987 Ahern Avenue  
Union City, CA 94587 USA



### LOCATION

- Easy access to I-880, Highway 92/San Mateo Bridge and Highway 84/Dumbarton Bridge, with close proximity to Oakland International Airport and the Port of Oakland.
- Minutes to Union Landing Retail Center (Walmart, Best Buy and Lowe's).

### FACILITY

- ±44,360 SF Warehouse
- ±2,880 SF of Brand New Spec Office Planned
- ±24' Clear Height
- 9 Dock-High Doors
- 2 Grade Level Doors
- 48' x 24' Column Spacing
- 0.45 GPM / 3,000 SF Sprinkler System
- 500 Amps, 480 Volts Power
- Call Broker For Rate & Touring Instructions
- Available Now

**Your single-source service for efficient move-in and operations: [prologisessentials.com](http://prologisessentials.com)**







44,360 SF

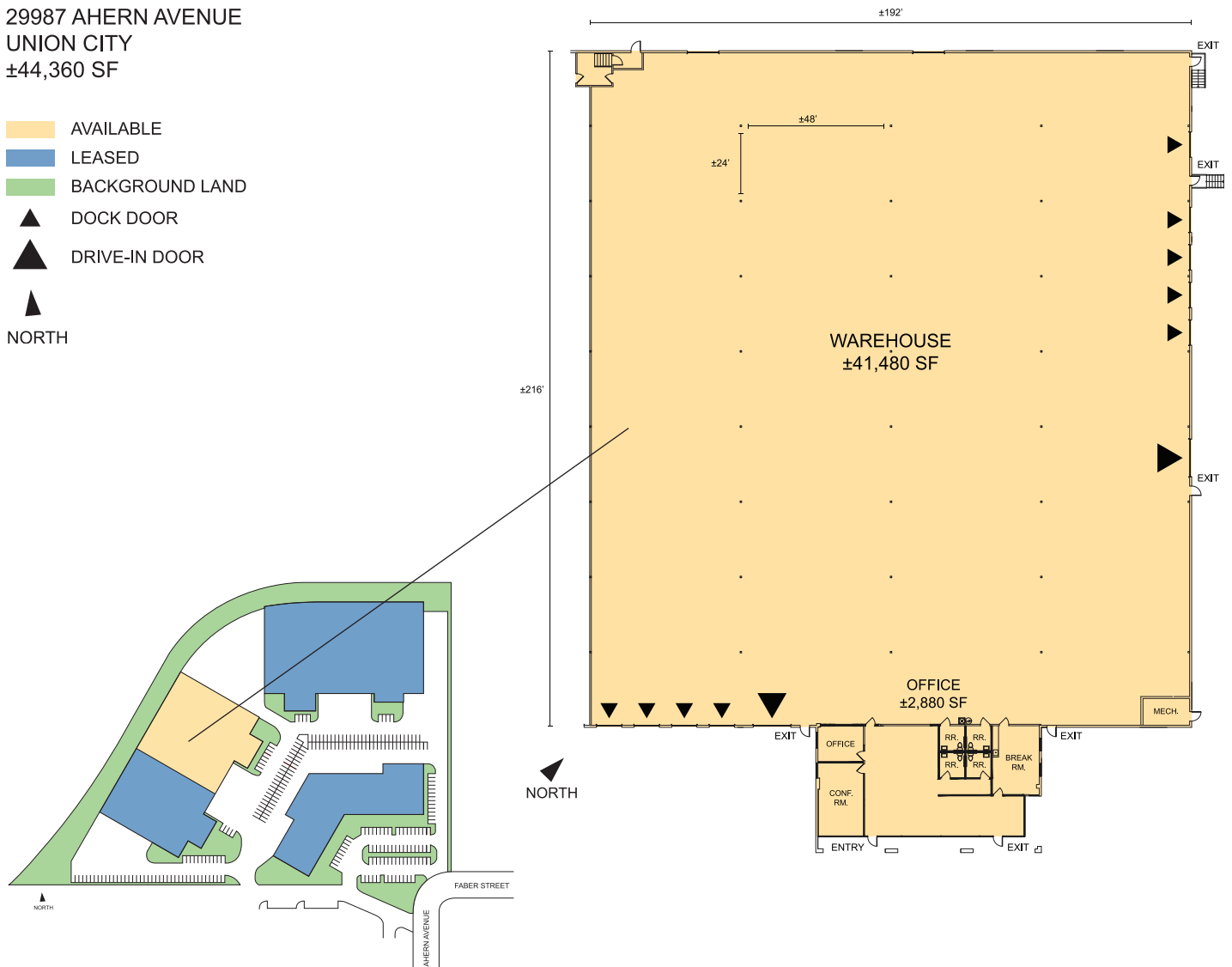
## Industrial Space For Lease



# Prologis Union City 3

29987 AHERN AVENUE  
UNION CITY  
±44,360 SF

-  AVAILABLE  
 LEASED  
 BACKGROUND LAND  
 DOCK DOOR  
 DRIVE-IN DOOR  
 NORTH



**Jeff Starkovich, SIOR**  
jeff.starkovich@cushwake.com  
cell +1 510 409 1111  
555 12th Street, Suite 1400  
Oakland, CA 94607 USA DRE  
License# 00644571



**Tom Damaschino**  
tom.damaschino@kbcadvisors.com  
cell +1 510 599 1189  
312 Clay Street, Suite 180 Oakland,  
CA 94607 USA  
DRE License# 01261227



**Sam Higgins, SIOR**  
sam.higgins@kbcadvisors.com  
cell +1 415 987 8798  
312 Clay Street, Suite 180  
Oakland, CA 94607 USA DRE  
License# 01329023



**Matt Ebner**  
mebner@prologis.com  
ph +1 510 648 7965  
680 N McCarthy Blvd, Suite 100  
Milpitas, CA 95035 USA  
DRE License# 01962626

# GO BEYOND THE BUILDING

**Prologis Essentials** is the single source for warehouse solutions to keep facilities running at a high level of efficiency. Our offerings are easy and convenient to procure and implement, providing support for move-in, moving forward, and growing any business.

## MATERIAL HANDLING

- A. Racking & Shelving
  - I. Layout and Design
  - II. New and Used Material
  - III. Permitting Services
  - IV. Buybacks and Liquidations
- B. Forklifts
  - I. Electric and Propane
  - II. New, Used, and Refurbished
  - III. Rentals
  - IV. Service



## ENERGY

- A. Solar
- B. LED Lighting
- C. EV Charging
- D. Generators



## AUTOMATION/ ADVANCED SOLUTIONS

- A. Conveyor and Sortation
- B. Locus Robotics
- C. VLMs, Shuttles, Carousels, AS/RS
- D. Pick Modules/Mezzanine

## SMART BUILDING

- A. Fiber Backbone
- B. Network and Cabling
- C. Internet Service
- D. Access Points
- E. Security Cameras and Monitoring Services
- F. Badge Access and Control
- G. Barcode Scanning



## PRODUCTS AND SERVICES

- A. Moving and Relocation Services
- B. HVLS Fans
- C. Office Furniture
- D. In-Plant Modular Offices
- E. Yard Ramps
- F. Janitorial Service
- G. Pest Control



**John Kenley**  
Essentials Solutions Manager  
jkenley@prologis.com  
415-733-9402

 **PROLOGIS<sup>®</sup>**  
ESSENTIALS

[www.prologisessentials.com](http://www.prologisessentials.com)