

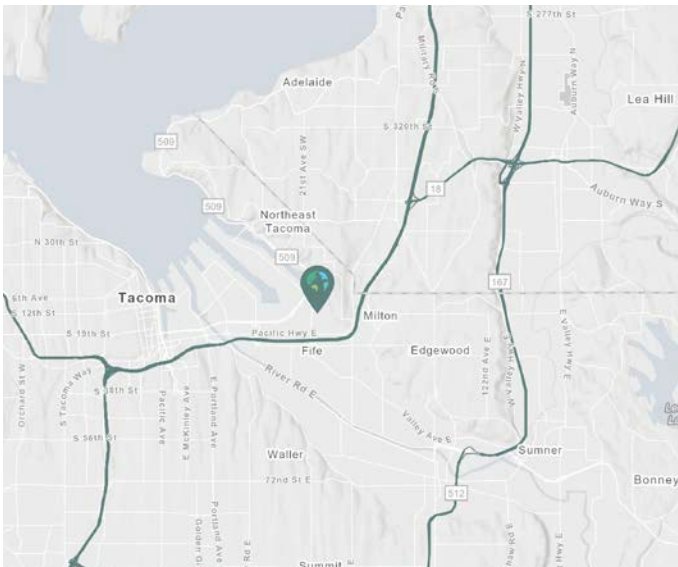
62,964 SF

Industrial Space For Lease



Prologis Park Fife 18

5555 8th St E
Fife, WA



LOCATION

- Excellent access to I-5 and SR-167 and 509
- One minute drive to Port of Tacoma

FACILITY

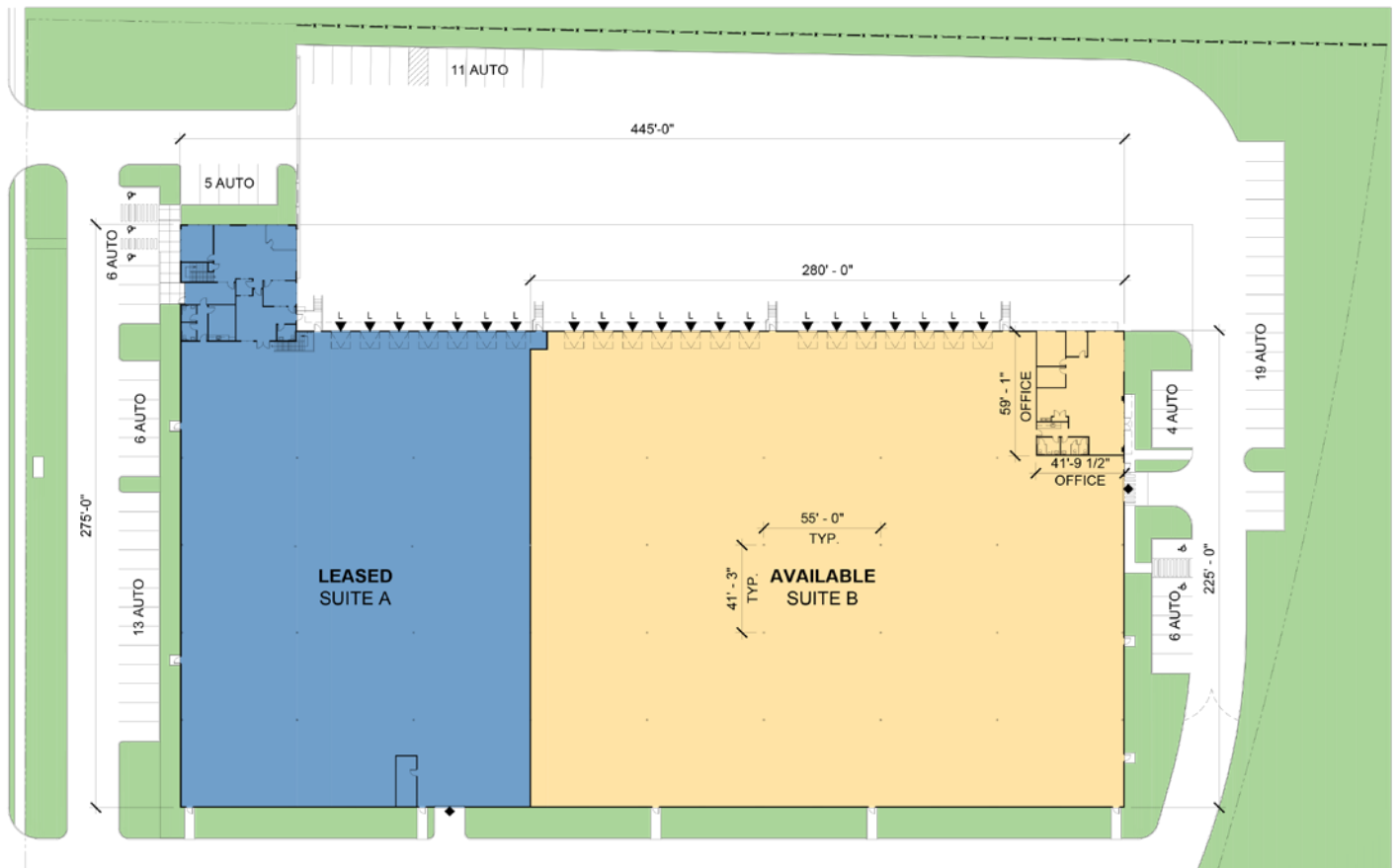
- 62,964 SF shell / 2,720 SF office
- 28'-30' Clear Height
- ESRF
- 14 Dock High Doors
- 1 Drive In Door
- 29 Auto Parking Stalls
- ±135' Truck Court
- Available July 1, 2022

ADVANTAGES AND AMENITIES

- All dock high doors with levelers
- Call brokers for more information

62,964 SF

Industrial Space For Lease



Kidder Mathews

Ty Clarke
ty.clarke@kidder.com
ph +1 253 722 1419
cell +1 253 720 2211
1201 Pacific Ave
Suite 1400
Tacoma, WA 98402 USA

Kidder Mathews

Todd Clarke
todd.clarke@kidder.com
ph +1 253 722 1422
cell +1 253 381 5500
1201 Pacific Ave
Suite 1400
Tacoma, WA 98402 USA

KBC Advisors

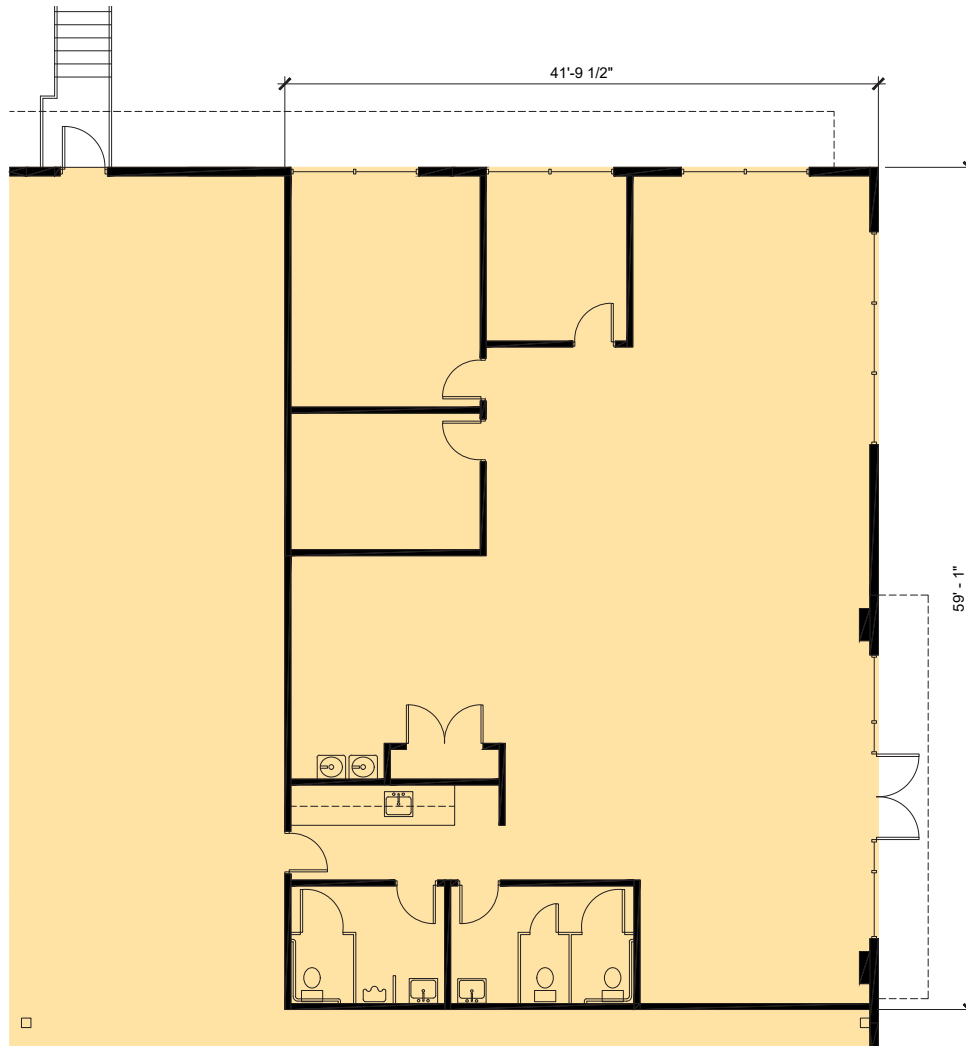
Matt Wood, SIOR
mattwood@kbcadvisors.com
ph +1 206 741 1030
cell +1 206 595 6814
5628 Airport Way S
Suite 238
Seattle, WA 98108 USA

Prologis

Mark Roddy
mroddy@prologis.com
ph +1 206 414 7617
cell +1 253 514 0299
3390 Weyerhaeuser Way S
Suite 100
Federal Way, WA 98001 USA

62,964 SF

Industrial Space For Lease



Kidder Mathews

Ty Clarke
ty.clarke@kidder.com
ph +1 253 722 1419
cell +1 253 720 2211
1201 Pacific Ave
Suite 1400
Tacoma, WA 98402 USA

Kidder Mathews

Todd Clarke
todd.clarke@kidder.com
ph +1 253 722 1422
cell +1 253 381 5500
1201 Pacific Ave
Suite 1400
Tacoma, WA 98402 USA

KBC Advisors

Matt Wood, SIOR
mattwood@kbcadvisors.com
ph +1 206 741 1030
cell +1 206 595 6814
5628 Airport Way S
Suite 238
Seattle, WA 98108 USA

Prologis

Mark Roddy
mroddy@prologis.com
ph +1 206 414 7617
cell +1 253 514 0299
3390 Weyerhaeuser Way S
Suite 100
Federal Way, WA 98001 USA