

# 9,900 SF

Industrial Space For Lease



## Prologis Stemmons Circle 1



1212 Dolton Drive, Suite 307  
Dallas, TX 75207 USA



### LOCATION

- Centrally located in the South Stemmons industrial submarket
- Easy access to major thoroughfares including I-35E, I-30, TX-183, and TX-12
- ~4 miles to Dallas Love Field Airport

### FACILITY

- 9,900 sf available
- 1,718 sf office
- 18' clear height
- 33' x 40' typical bay spacing
- 1 (10' x 10') overhead dock door
- 1 (11' x 12') overhead dock door with indoor ramp

### ADVANTAGES AND AMENITIES

- Access to the [Prologis Essentials](#) platform, which includes:
  - [Operations Essentials](#)
  - [Energy + Sustainability Essentials](#)
  - [Mobility Essentials](#)
  - [Workforce Essentials](#)

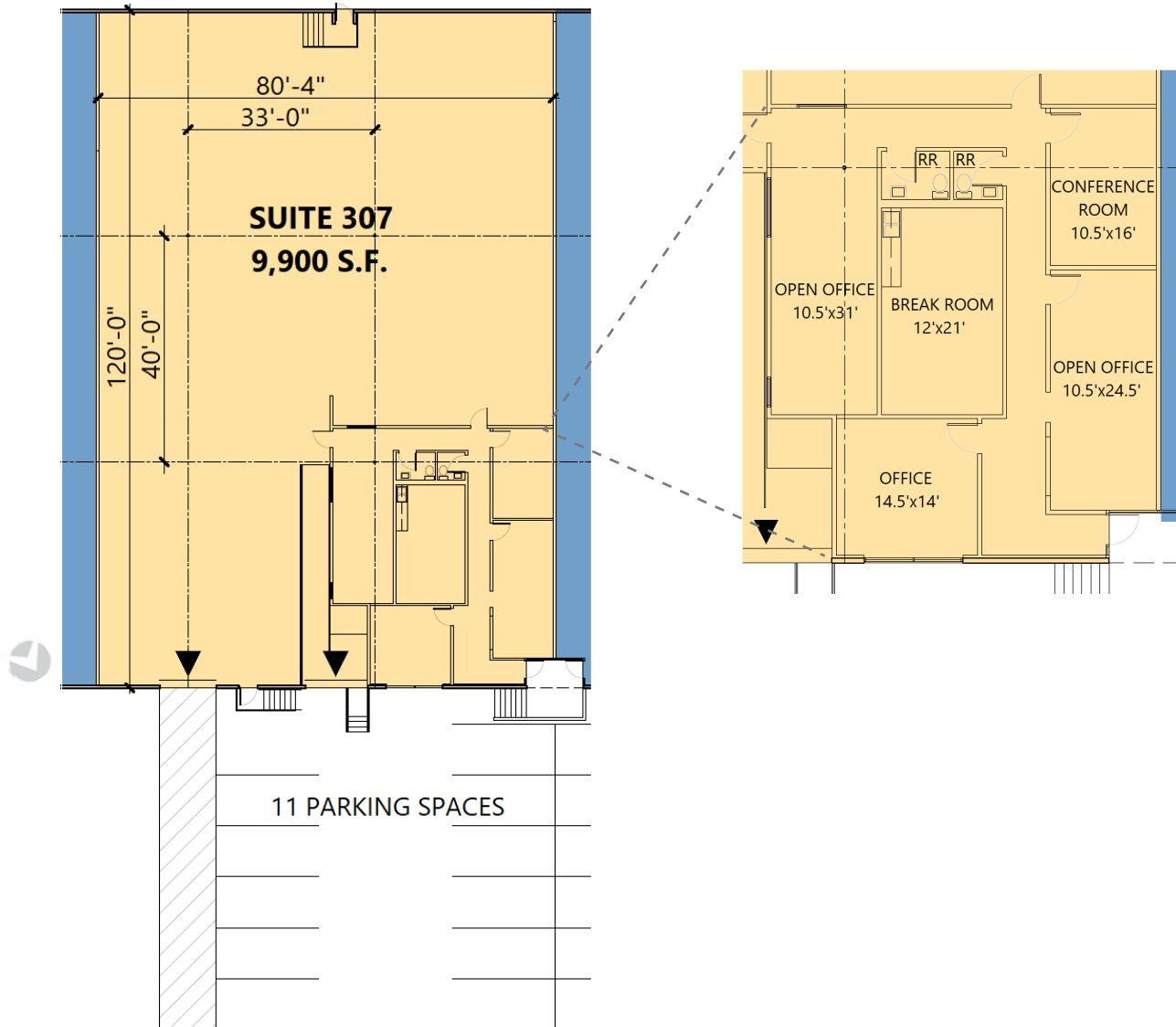
**Prologis Essentials: your single-source service for efficient move-in and operations at [prologisessentials.com](https://prologisessentials.com)**

# 9,900 SF

Industrial Space For Lease



## Prologis Stemmons Circle 1



### Lee & Associates

Adam Graham, SIOR, CCIM  
agraham@lee-associates.com  
ph +1 972 934 4011  
cell +1 214 335 3320  
14950 Quorum Drive  
Suite 100  
Dallas, TX 75254 USA

### Lee & Associates

Stephen Williamson, SIOR  
swilliamson@lee-associates.com  
ph +1 972 934 4045  
cell +1 817 705 5470  
14950 Quorum Drive  
Suite 100  
Dallas, TX 75254 USA

### Prologis

Sal Giunta  
sg Giunta@prologis.com  
ph +1 972 884 9247  
cell +1 970 443 7574  
2021 McKinney Avenue  
Suite 1050  
Dallas, TX 75201 USA