

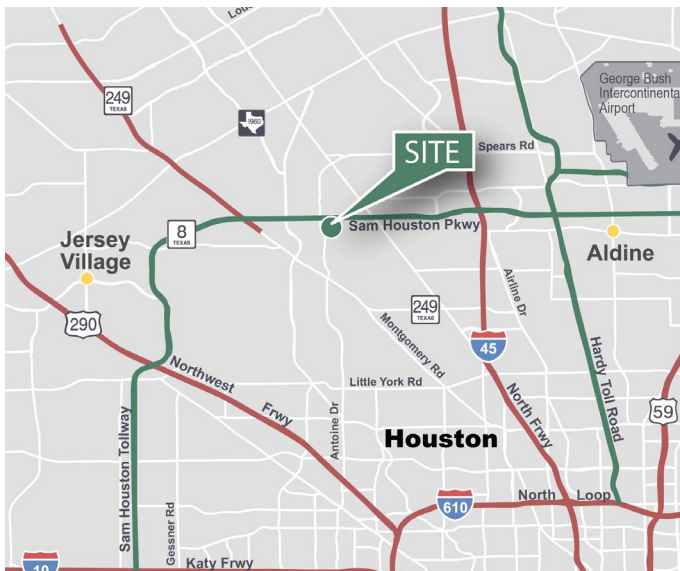
# 95,700 SF

## Industrial Space For Lease



## Prologis Park Beltway Antoine 2

3413 N. Sam Houston Parkway W  
Houston, TX 77086 USA



### LOCATION

- Fronting Beltway 8, Antoine Drive exit
- 2 miles to TX Hwy 249 and 4 miles to I-45
- 9 minutes to Bush Intercontinental Airport
- 20 minutes to Downtown and The Woodlands

### FACILITY

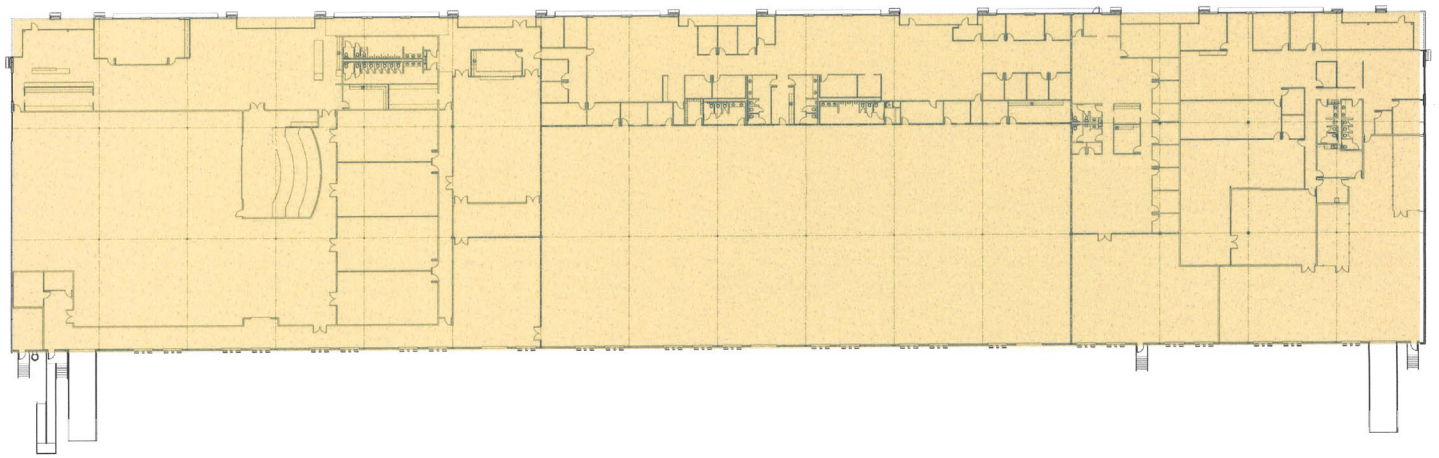
- 95,700 SF available
- 61,564 SF of office
- 24' clear height
- 26 dock high doors / 2 drive-in ramps
- 40' x 53' column spacing

### ADVANTAGES AND AMENITIES

- ESFR sprinklers
- Visible to 150,000 vehicles per day
- Beltway 8 signage
- Deed restricted business park

# 95,700 SF

## Industrial Space For Lease



## CBRE

### CBRE

**Jason Dillee**

Jason.Dillee@cbre.com

ph +1 713 577 1796

cell +1 832 741 0733

2800 Post Oak Blvd., Suite 500

Houston, TX 77056 USA

### CBRE

**Nathan Wynne**

Nathan.Wynne@cbre.com

ph +1 713 577 1724

cell +1 713 206 3881

2800 Post Oak Blvd., Suite 500

Houston, TX 77056 USA

### Prologis

**Kevin Wittler**

kwittler@prologis.com

ph +1 713 613 6927

cell +1 832 746 1581

1296 North Post Oak Road

Houston, TX 77055 USA