

# 90,148 SF

## Industrial Space For Lease



## Prologis Great Southwest

2951 N. Great Southwest Parkway, Suite 160  
Grand Prairie, Texas 75050 USA



### LOCATION

- Situated in the highly desirable Great Southwest industrial submarket with convenient access to major thoroughfares (SH-360, TX-161 and I-30)

### FACILITY

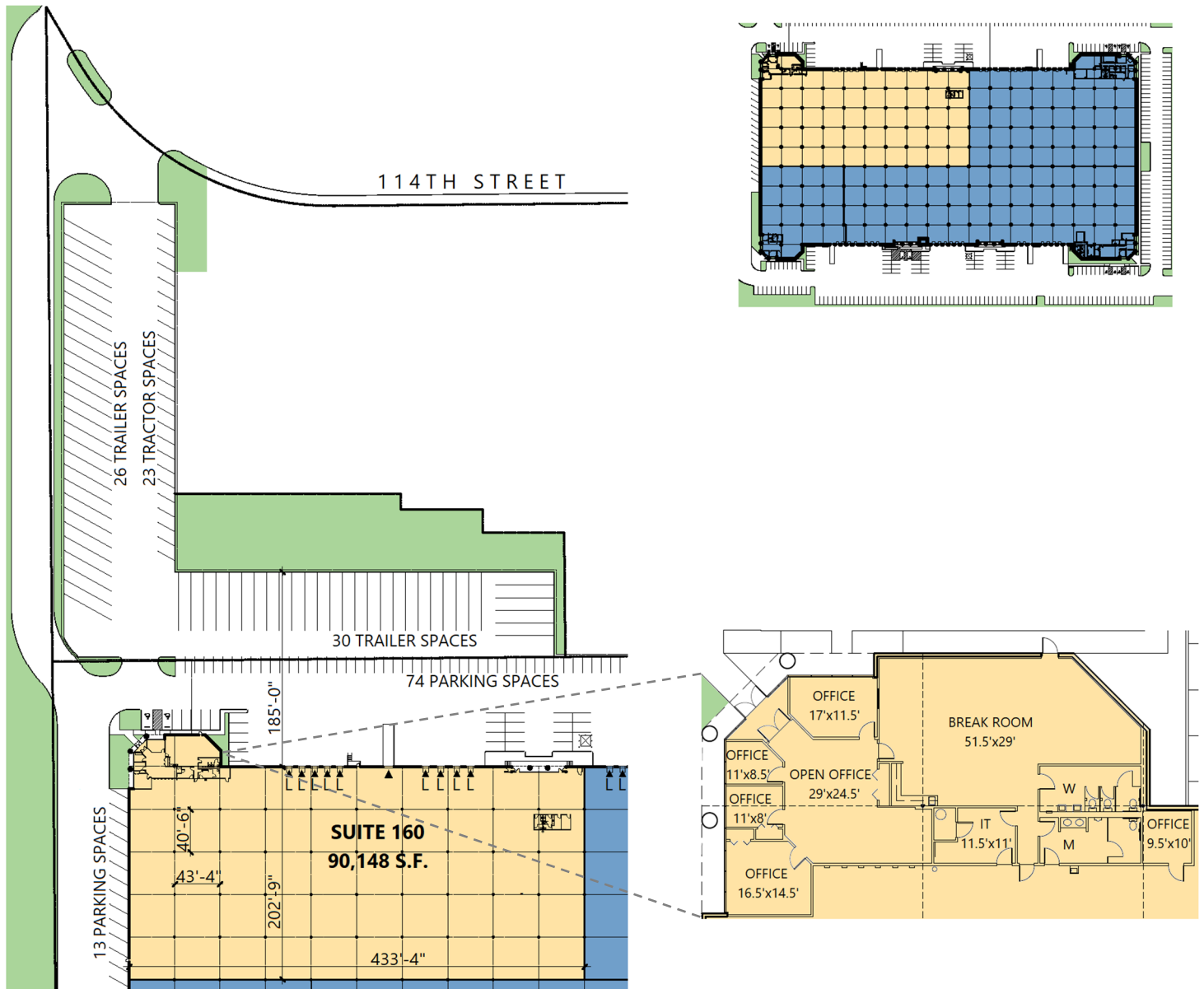
- 90,148 sf available
- 3,442 sf office
- 517 sf warehouse office
- 24' clear height
- 43'4" x 40'6" typical bay spacing
- 9 (9' x 10') dock doors with levelers
- 1 (10' x 10') dock door with ramp
- Fully sprinklered

### ADVANTAGES AND AMENITIES

- Front load configuration

# 90,148 SF

## Industrial Space For Lease



**CBRE**

**Steve Koldyke**

steve.koldyke@cbre.com  
ph +1 214 979 6381  
cell +1 214 850 4963  
2100 McKinney Avenue  
Suite 700  
Dallas, TX 75201 USA

**CBRE**

**Brian Gilchrist**

brian.gilchrist@cbre.com  
ph +1 214 979 6394  
cell +1 817 907 1774  
2100 McKinney Avenue  
Suite 700  
Dallas, TX 75201 USA

**Prologis**

**Ryan McNaughton**

rmcnaughton@prologis.com  
ph +1 972 884 9218  
cell +1 214 673 9489  
2021 McKinney Avenue  
Suite 1050  
Dallas, TX 75201 USA