

# 1,609 SF

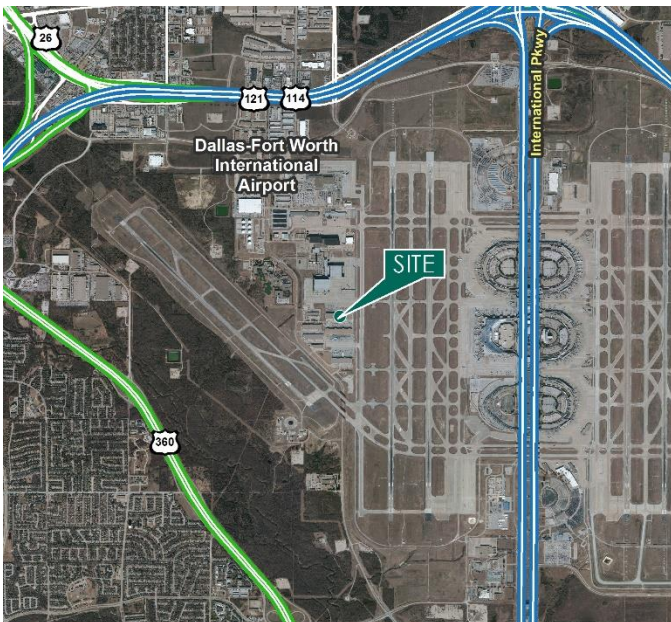
Industrial Space For Lease



## Prologis DFW Air Cargo Center



1639 W. 23rd Street, Suite 350  
DFW Airport, TX 75261 USA



### LOCATION

- Immediate access to DFW International Airport
- Easy access to Hwy 114

### FACILITY

- 1,609 sf mezzanine available

### ADVANTAGES AND AMENITIES

- Adjacent to major all-cargo operators
- Close proximity to City of Grapevine
- Access to the [Prologis Essentials](#) platform, which includes:
  - [Operations Essentials](#)
  - [Energy Essentials](#)
  - [Workforce Essentials](#)
  - [Transportation Essentials](#)
  - [Digital Essentials](#)

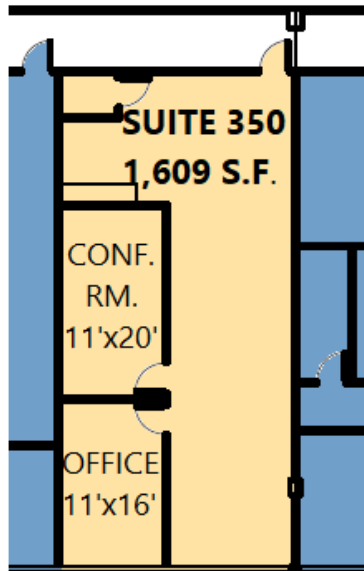
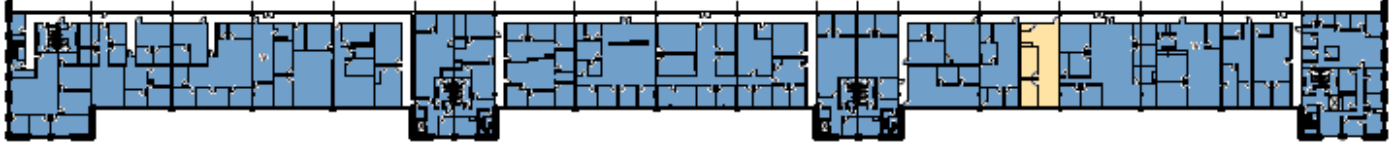
Prologis Essentials: your single-source service for efficient move-in and operations at [prologisessentials.com](https://prologisessentials.com)

# 1,609 SF

Industrial Space For Lease



## Prologis DFW Air Cargo Center



### Prologis

Keesha Partida  
kpartida@prologis.com  
ph +1 972 884 9224  
cell +1 214 533 1161  
2021 McKinney Avenue  
Suite 1050  
Dallas, TX 75201 USA

**Prologis Essentials: your single-source service for efficient move-in and operations at [prologisessentials.com](https://prologisessentials.com)**

No warranty or representation, expressed or implied, is made as to the accuracy of the information contained herein, and same is submitted subject to error and omissions.