

11,224 SF

Industrial Space For Lease



Prologis Southfield



277 Southfield Parkway, Suite 170
Forest Park, GA 30297 USA

LOCATION

- Strategically located near:
 - I-75: 2 miles
 - I-285: 2.2 miles
 - Hartsfield-Jackson Atlanta International Airport: 4.7 miles
 - I-85: 7.7 miles
- Clayton County Tier 1 tax incentives available

FACILITY

- 49,216 SF Building
- 11,224 SF Available
 - 4,631 SF office
- 18' clear height
- Twenty eight (28) auto park spaces
- Three (3) dock doors
- One (1) drive-in door
- LED office and warehouse lights with motion sensors
- Rear-load configuration
- 100' building depth
- 30' x 30' column spacing
- 92' truck court with 50' concrete apron
- End Unit

ADVANTAGES AND AMENITIES

- Fast, cost-effective forklift and racking sourcing through Prologis Essentials



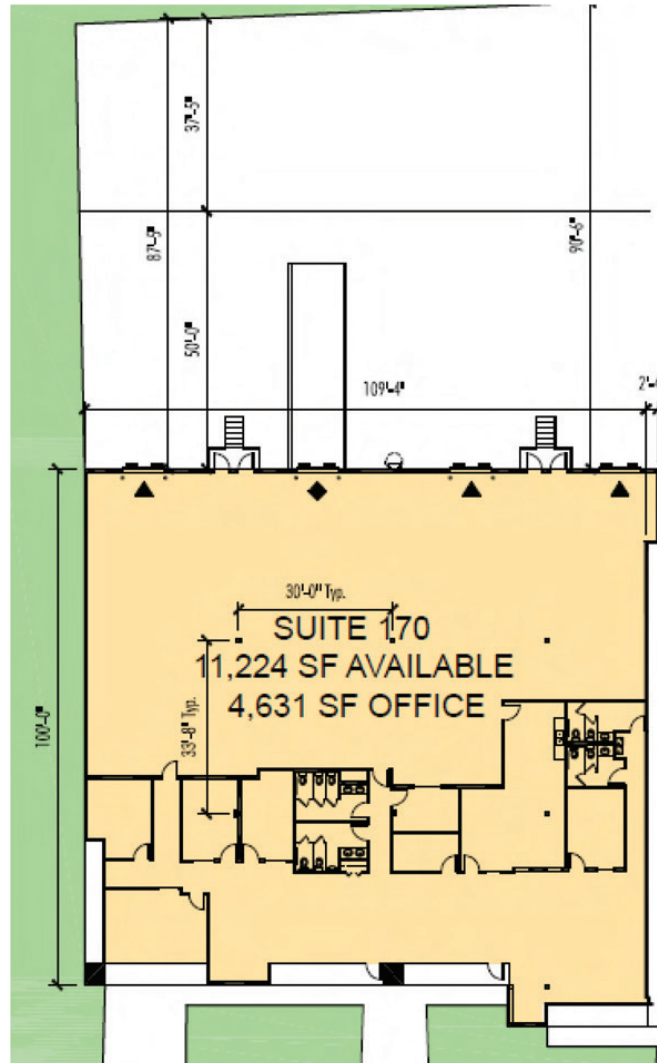
Prologis Essentials: your single-source service for efficient move-in and operations at [prologisessentials.com](https://www.prologisessentials.com)

11,224 SF

Industrial Space For Lease



Prologis Southfield



LEGEND

- ▲ Dock door
- ◆ Drive-in-door
- Land
- Leased area
- Vacant area



Seefried Industrial
Doug Smith
dougs@seefriedproperties.com
ph +1 678 904 1919
cell +1 678 642 8600
3333 Riverwood Parkway SE
Suite 200
Atlanta, GA 30339 USA

Seefried Industrial
Joseph Kriss
josephk@seefriedproperties.com
ph +1 404 233 0204
cell +1 678 362 4641
3333 Riverwood Parkway SE
Suite 200
Atlanta, GA 30339 USA

Seefried Industrial
Tripp Ausband
tausband@seefriedproperties.com
ph +1 404 233 0204
cell +1 770 825 3391
3333 Riverwood Parkway SE
Suite 200
Atlanta, GA 30339 USA

Prologis
Tierra Evans
tevens2@prologis.com
ph +1 972 884 9264
cell +1 302 632 4977
3475 Piedmont Rd NE
Suite 650
Atlanta, GA 30305 USA

www.prologis.com
Follow us on LinkedIn and Twitter

Prologis Essentials: your single-source service for efficient move-in and operations at prologisessentials.com

No warranty or representation, expressed or implied, is made as to the accuracy of the information contained herein, and same is submitted subject to error and omissions.