

20,962 SF

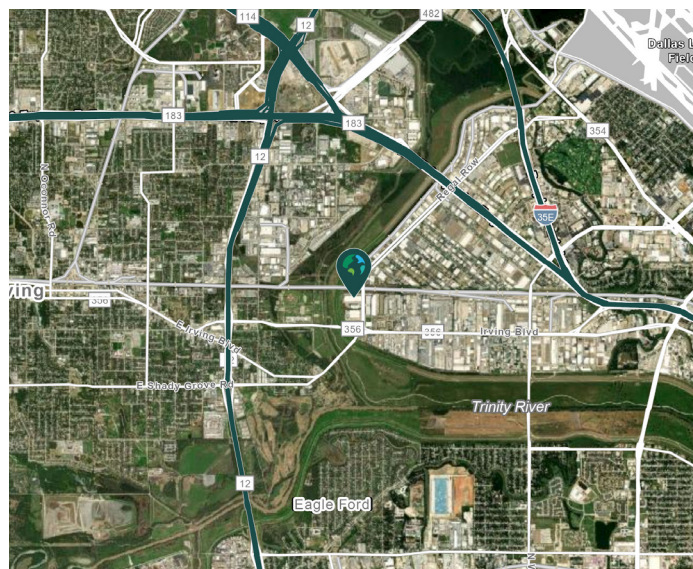
Industrial Space For Lease



Prologis Stemmons 11



151 Regal Row, Suite 233
Dallas, TX 75247 USA



LOCATION

- Easy access to major thoroughfares including I-35, I-30, TX-183, and TX-12
- ~6 miles to Dallas Love Field Airport

FACILITY

- 20,962 sf available
- 868 sf office
- 18' clear height
- 39'-6" x 36' typical bay spacing
- 6 (10' x 10') overhead dock doors
- LED warehouse lighting

ADVANTAGES AND AMENITIES

- Access to the [Prologis Essentials](#) platform, which includes:
 - [Operations Essentials](#)
 - [Energy + Sustainability Essentials](#)
 - [Mobility Essentials](#)
 - [Workforce Essentials](#)

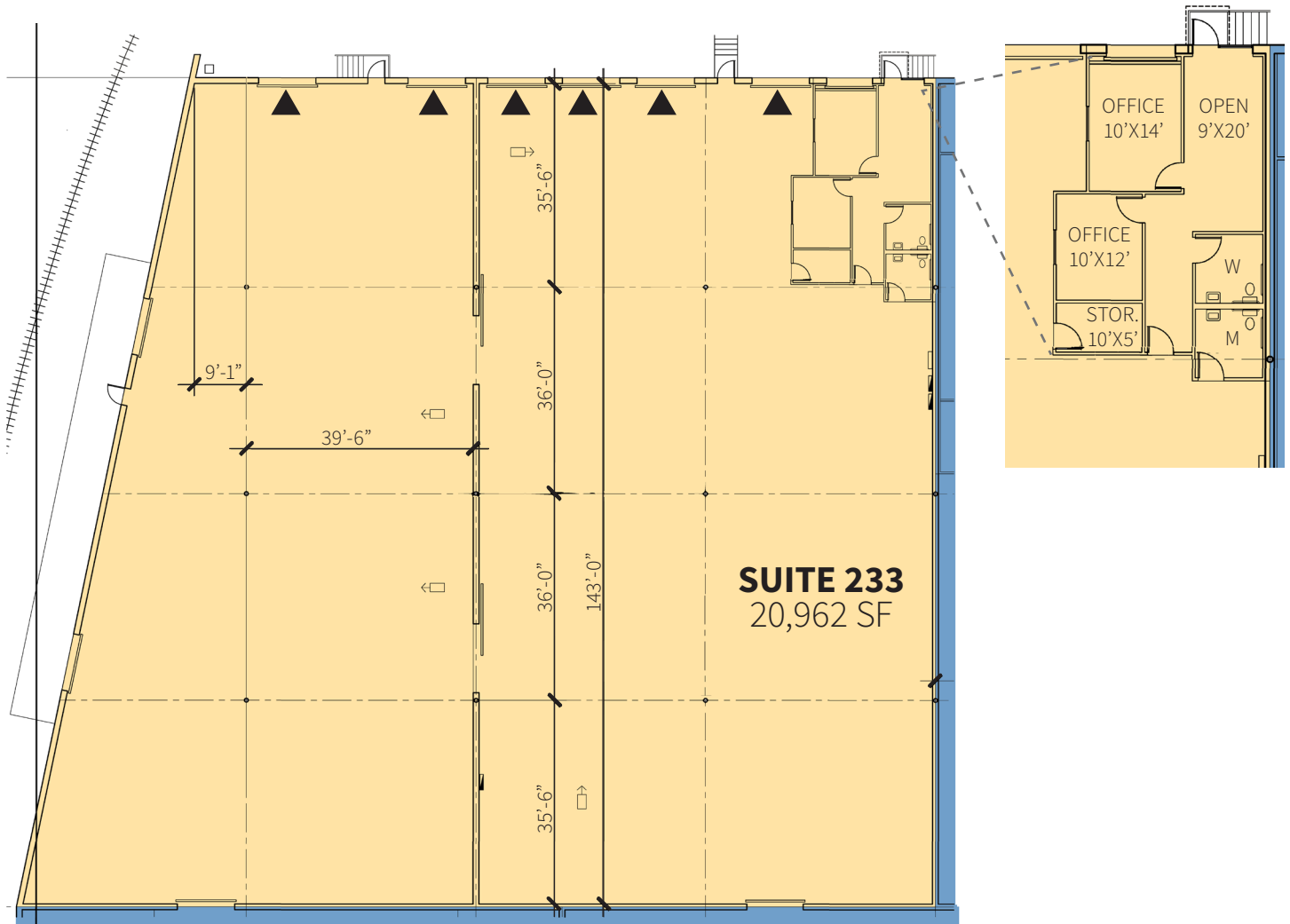
Prologis Essentials: your single-source service for efficient move-in and operations at prologisessentials.com

20,962 SF

Industrial Space For Lease



Prologis Stemmons 11



NAI Robert Lynn
Chase Miller
cmiller@nairl.com
ph +1 214 256 7131
cell +1 214 770 5495
4851 LBJ Freeway
10th Floor
Dallas, TX 75244 USA

Prologis
Sal Giunta
sg Giunta@prologis.com
ph +1 972 884 9247
cell +1 970 443 7574
2021 McKinney Avenue
Suite 1050
Dallas, TX 75201 USA