

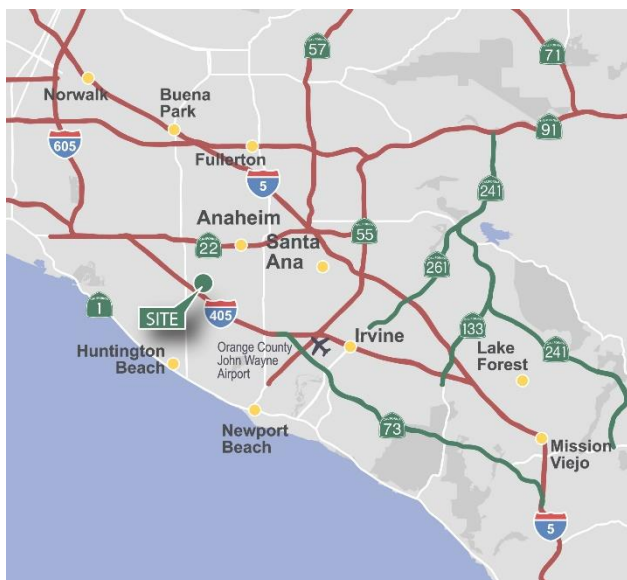
1,212 SF

Industrial Space For Lease



Prologis West Orange County Business Center

7125 Fenwick Lane, Suite E
Westminster, CA 92683



LOCATION

- Immediate access to the 405 Freeway
- Strategic West Orange County location with skilled and diversified work force

FACILITY

- 23,783 square foot building
- 1,212 square feet available
- 355 square feet of single-story office space
- 857 square feet of warehouse space
- 1 ground-level loading door
- 14' warehouse clearance
- 200 Amps, 120/208 volts (to be verified)
- Fire sprinklers
- ±1.72 parking spaces per 1,000 s.f.

ADVANTAGES AND AMENITIES

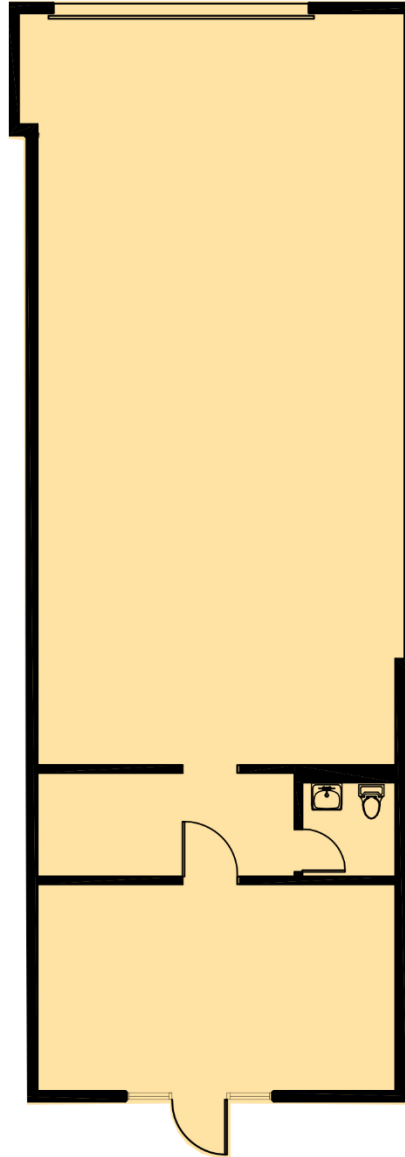
- Close to retail/dining amenities at the Westminster Mall and Bella Terra
- Part of a larger 264,847 s.f. professionally managed business park

1,212 SF

Industrial Space For Lease



FLOOR PLAN



Steve Wagner

License #01314652
steve.wagner@am.jll.com
+1 949 885 2923
4 Park Plaza, Suite 900
Irvine, CA 92614
www.jll.com

Louis Tomaselli

License #00904844
louis.tomaselli@am.jll.com
+1 949 885 2985
4 Park Plaza, Suite 900
Irvine, CA 92614
www.jll.com

Zach Niles

License #01311756
zach.niles@am.jll.com
+1 949 885 2922
4 Park Plaza, Suite 900
Irvine, CA 92614
www.jll.com

Parker Hutchison

License #01875578
phutchison@prologis.com
+1 562 345 9209
17777 Center Court Dr N, Suite 100
Cerritos, CA 90703
www.prologis.com