

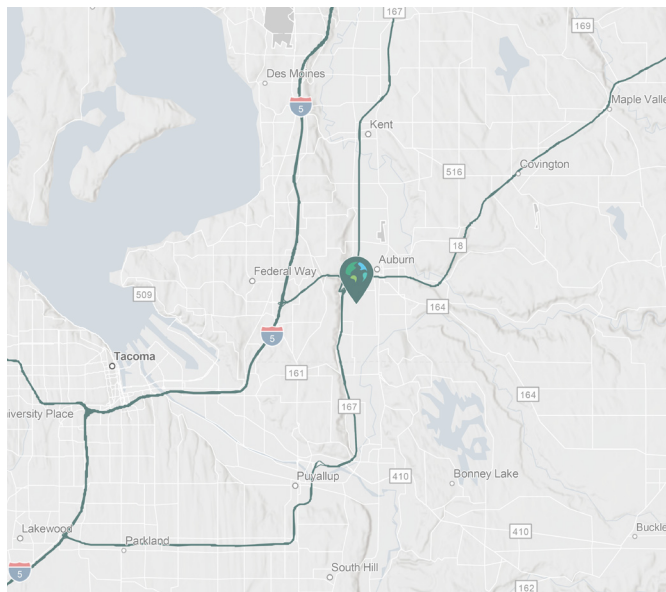
# 109,452 SF

## Industrial Space For Lease



## Prologis Park Algona 4

700 Milwaukee Avenue N  
Algona, WA 98001



### LOCATION

- Located in Prologis Park Algona
- Approx 12 miles to Port of Tacoma
- Visibility to 142nd Street
- Direct access to SR-167 via 24th Street.

### FACILITY

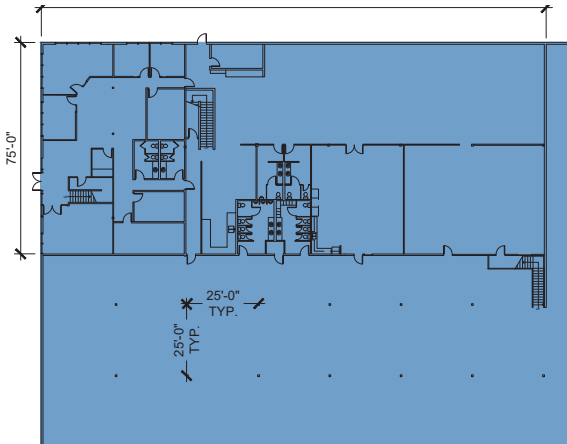
- 109,452 SF total available
- Approximately 13,254 SF office and approximately 13,254 SF mezzanine
- 30' clear height
- 19 dock-high doors
- Available 09/01/2022
- Strong corporate image

# 109,452 SF

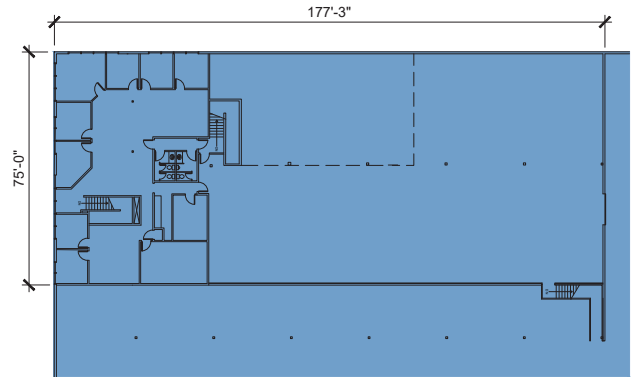


## Industrial Space For Lease

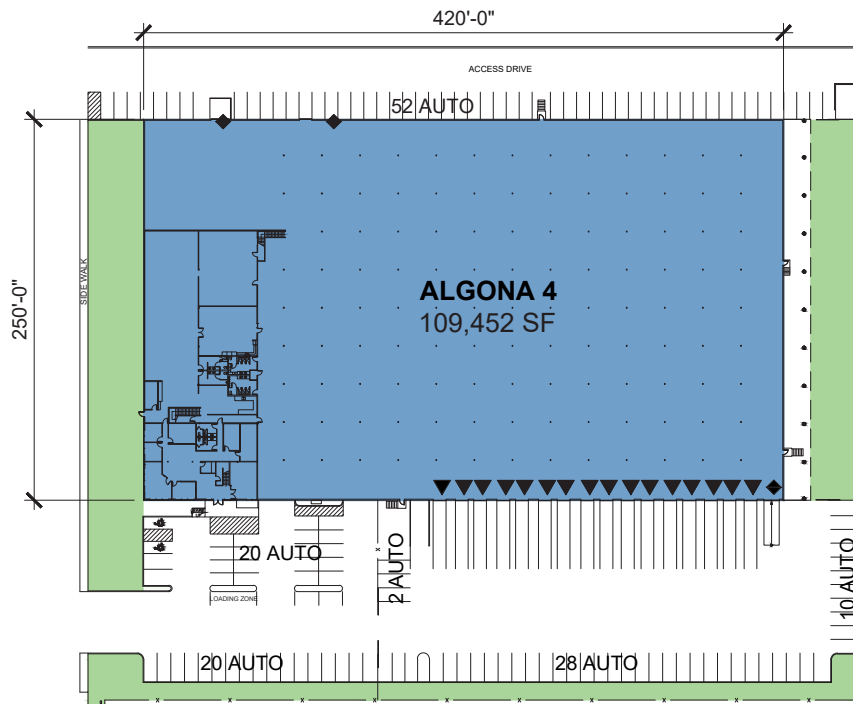
### Office Plan



### Mezzanine Office Plan



### Site Plan



#### Colliers International

**Matt McGregor**  
Matt.McGregor@Colliers.com  
ph +1 206 624 7401  
cell +1 206 851 4616  
601 Union Street  
Suite 5300  
Seattle, WA 98101 USA

**Bill Condon**  
Bill.Condon@Colliers.com  
ph +1 206 624 7400  
cell +1 206 235 9732  
601 Union Street  
Suite 5300  
Seattle, WA 98101 USA

#### Prologis

**Mark Roddy**  
mroddy@prologis.com  
ph +1 206 414 7617  
cell +1 253 514 0299  
33930 Weyerhaeuser Way S  
Suite 100  
Federal Way, WA 98001 USA