

18,720 SF

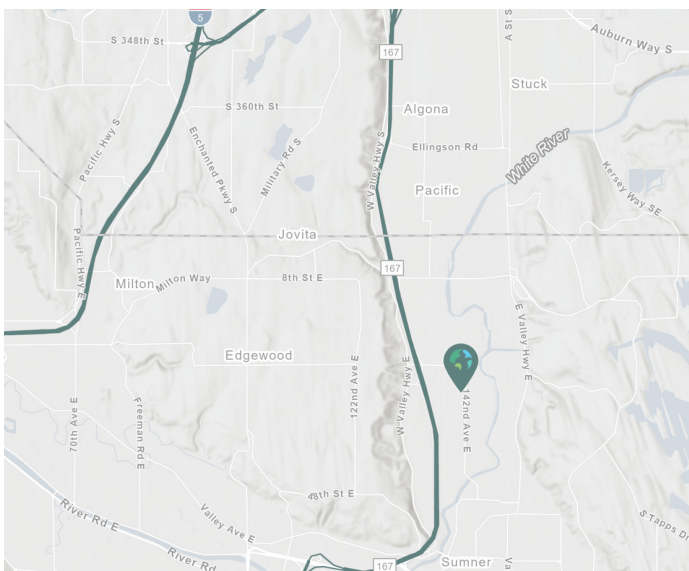
## Industrial Space For Lease



# Prologis Park Sumner 8



3104 142nd Avenue East  
Suites 105-107  
Sumner, WA 98134



## LOCATION

- Located in Prologis Park Sumner
- Visibility to 142nd Street
- Direct access to SR-167 via 24th Street
- End cap space

## FACILITY

- 18,720 total SF available
- 3,090 SF office
- 9 dock high doors
- 3 drive in doors
- 24' clear height
- Spacious truck maneuverability
- Reinforced concrete aprons
- ESFR sprinkler

**Prologis Essentials: your single-source service for efficient move-in and operations at [prologisessentials.com](https://prologisessentials.com)**

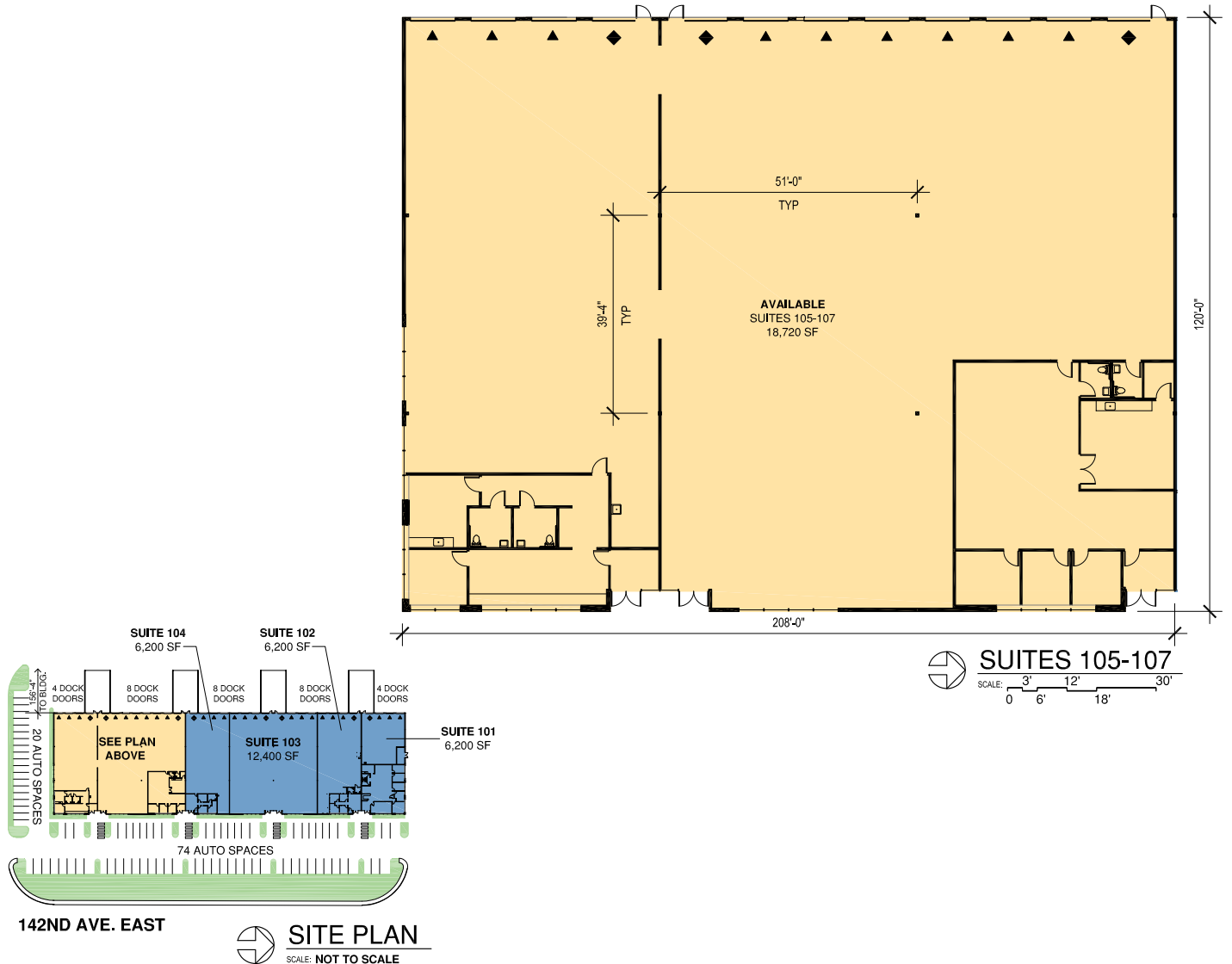
www.prologis.com

# 18,720 SF

Industrial Space For Lease



## Prologis Park Sumner 8



# CBRE

### CBRE, Inc.

John Gilliland  
john.gilliland@cbre.com  
ph +1 206 422 2745  
cell +1 206 226 7930  
1420 5th Avenue  
Suite 3800  
Seattle, WA 98101

### CBRE, Inc.

John Sullivan  
john.sullivan@cbre.com  
ph +1 206 422 2744  
cell +1 206 719 2902  
1420 5th Avenue  
Suite 3800  
Seattle, WA 98101

### Prologis

Mark Roddy  
mroddy@prologis.com  
ph +1 206 414 7617  
cell +1 253 514 0299  
33930 Weyerhaeuser Way S  
Suite 100  
Federal Way, WA 98001

**Prologis Essentials: your single-source service for efficient move-in and operations at [prologisessentials.com](http://prologisessentials.com)**

No warranty or representation, expressed or implied, is made as to the accuracy of the information contained herein, and same is submitted subject to error and omissions.