



±428,037 SF
Industrial Space Available

Prologis Commerce Park at Goodyear | Building 2

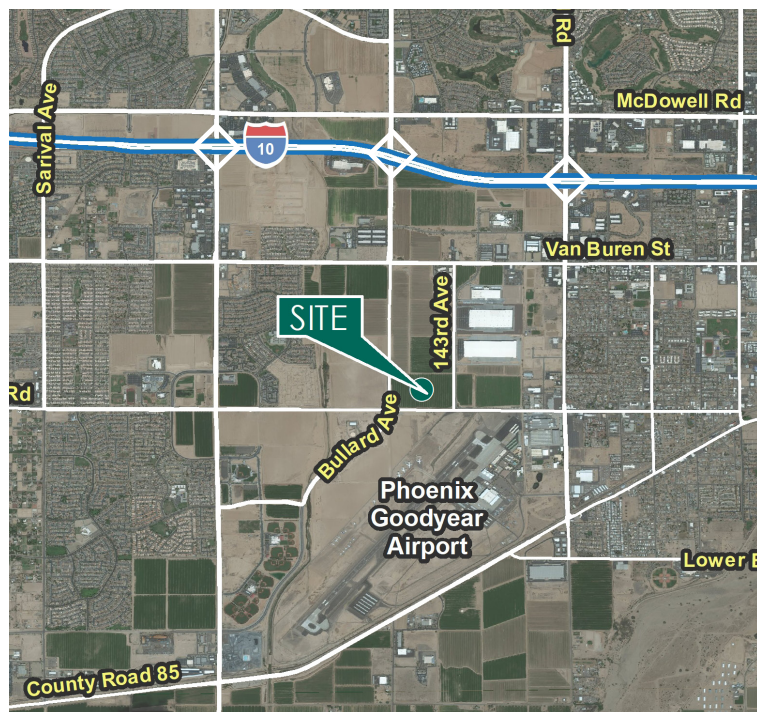
890 S 143rd Ave
Goodyear, AZ 85338

www.prologis.com



Prologis Commerce Park at Goodyear Building 2

890 S 143rd Ave | Goodyear, AZ | 85338



±428,037

square feet available

1.5 miles

from Interstate 10

4 buildings; 113 acres

master planned industrial park

Property Description

- 4 building master planned industrial park
- I-1 zoning, City of Goodyear

Property Features

- ±428,037 SF available
- 40' minimum clear height
- 1602 parking stalls
- 277 trailer parking stalls
- 76 dock-high doors
- 4 grade-level doors
- Abundant power (APS)
- ESFR sprinkler system
- R-38 insulated roof deck
- 185' concrete truck court
- 550' building depth
- 56'x60' typical column spacing
- LED motion sensor lighting

Highway Access

- Minutes from Interstate 10 (1.5 miles), Loop 303 and State Highway 85; the park is ideally located to serve Arizona as well as the key markets in the Western United States including Northern California, Ports of Long Beach, New Mexico, Utah and Nevada

Location

- Goodyear is the 6th fastest growing city in the United States (U.S. Census Bureau)
- Prologis Commerce Park at Goodyear is located in the heart of the Goodyear Business Corridor
- Close proximity to Phoenix Goodyear Airport

Corporate neighbors

- Macy's, UPS, Chewy.com, Dick's Sporting Goods, Blue Buffalo, Ball, REI, Michael Lewis Company, Fortune 28 Technology Company, Fortune 8 E-Commerce Company

Foreign Trade Zone capable

- 72% reduction in real property tax
- 72% reduction in personal property (equipment tax)
- Duty deferral
- Duty elimination
- Reduced customs reporting entries

Opportunity Zone

- Capital gains tax incentives for investing in opportunity zone
- Temporary deferral for capital gains reinvested
- Step-up in basis up to 15%
- Permanent exclusion from taxable income of capital gains

Prologis Commerce Park at Goodyear Building 2

890 S 143rd Ave | Goodyear, AZ | 85338





JLL
 3131 East Camelback Road
 Suite 400
 Phoenix, AZ 85016 USA
 Main: +1 602 282 6300

Anthony Lydon, CSCMP
 Managing Director
 aj.lydon@jll.com
 +1 602 282 6268

Marc Hertzberg, SIOR
 Managing Director
 marc.hertzberg@jll.com
 +1 602 282 6269

Riley Gilbert
 Senior Vice President
 riley.gilbert@jll.com
 +1 602 282 6271

John Lydon
 Vice President
 john.lydon@jll.com
 +1 602 282 6326

Prologis - Phoenix
 2525 East Camelback Road
 Suite 400
 Phoenix, AZ 85016 USA
 Main: +1 602 474 8350

Megan Creecy-Herman
 VP, Investment Officer
 mcreecyherman@prologis.com
 +1 602 474 8364

Jeff Foster
 VP, Market Officer
 jfoster@prologis.com
 +1 602 474 8383

www.prologis.com | NYSE: PLD
 Twitter: @Prologis

Prologis is the leading owner, operator and developer of industrial logistics real estate with approximately 666 million square feet (62 million square meters) owned and under management in 20 countries on four continents.