

PROLOGIS FLOWER MOUND

600 SILVERON BOULEVARD
FLOWER MOUND, TX 75028



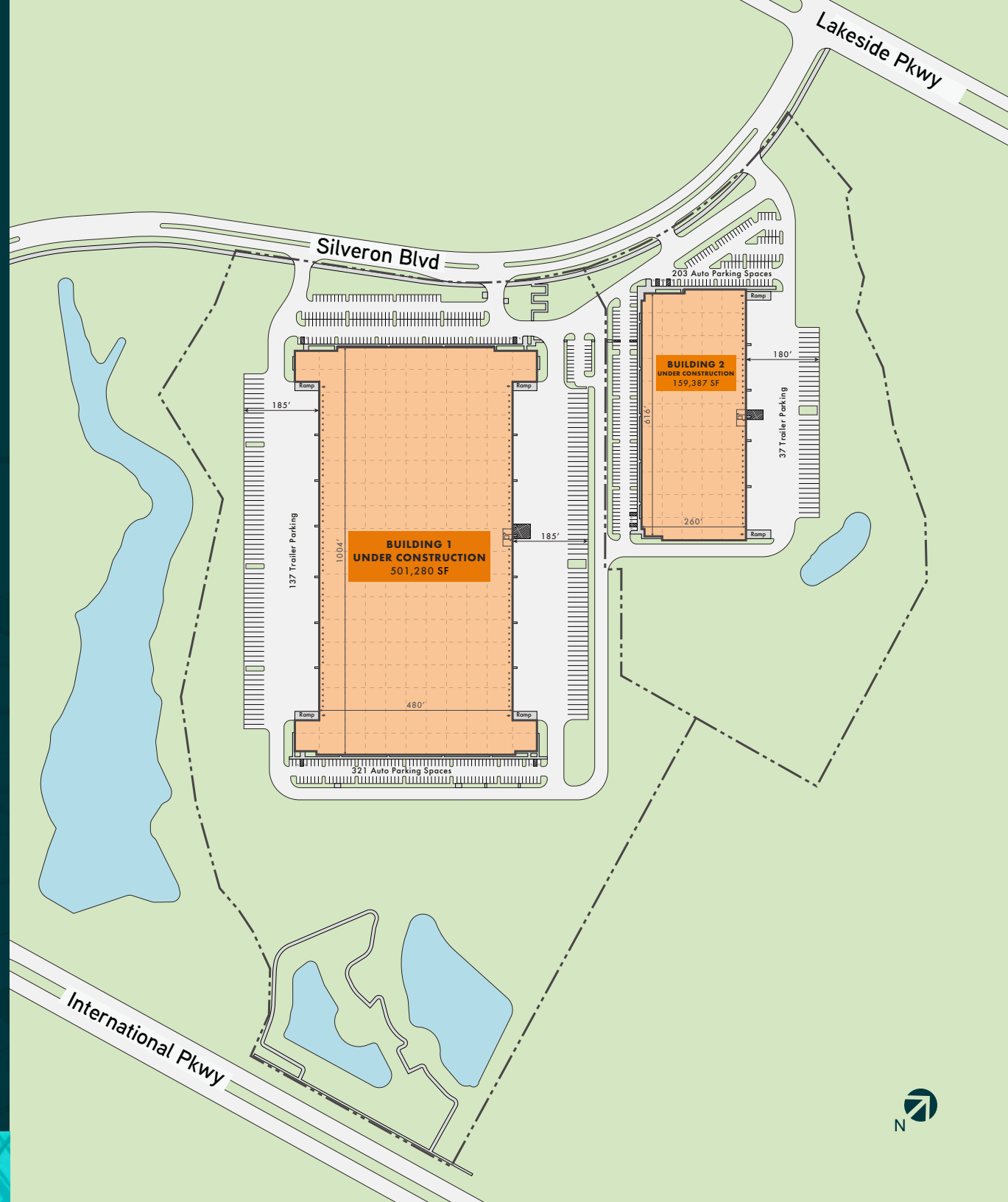
Class A Industrial Park

159,387 SF FOR LEASE



Class A Industrial Space with Triple Freepoint Status

Two purpose-built buildings
designed to meet the evolving
logistics and distribution demands
of today's businesses.



Building 2



159,387 SF



Spec office



32' Clear Height



Flexible Configuration



28 Dock Doors



2 Oversized Ramps



R-23 Insulation
(HVAC Ready)



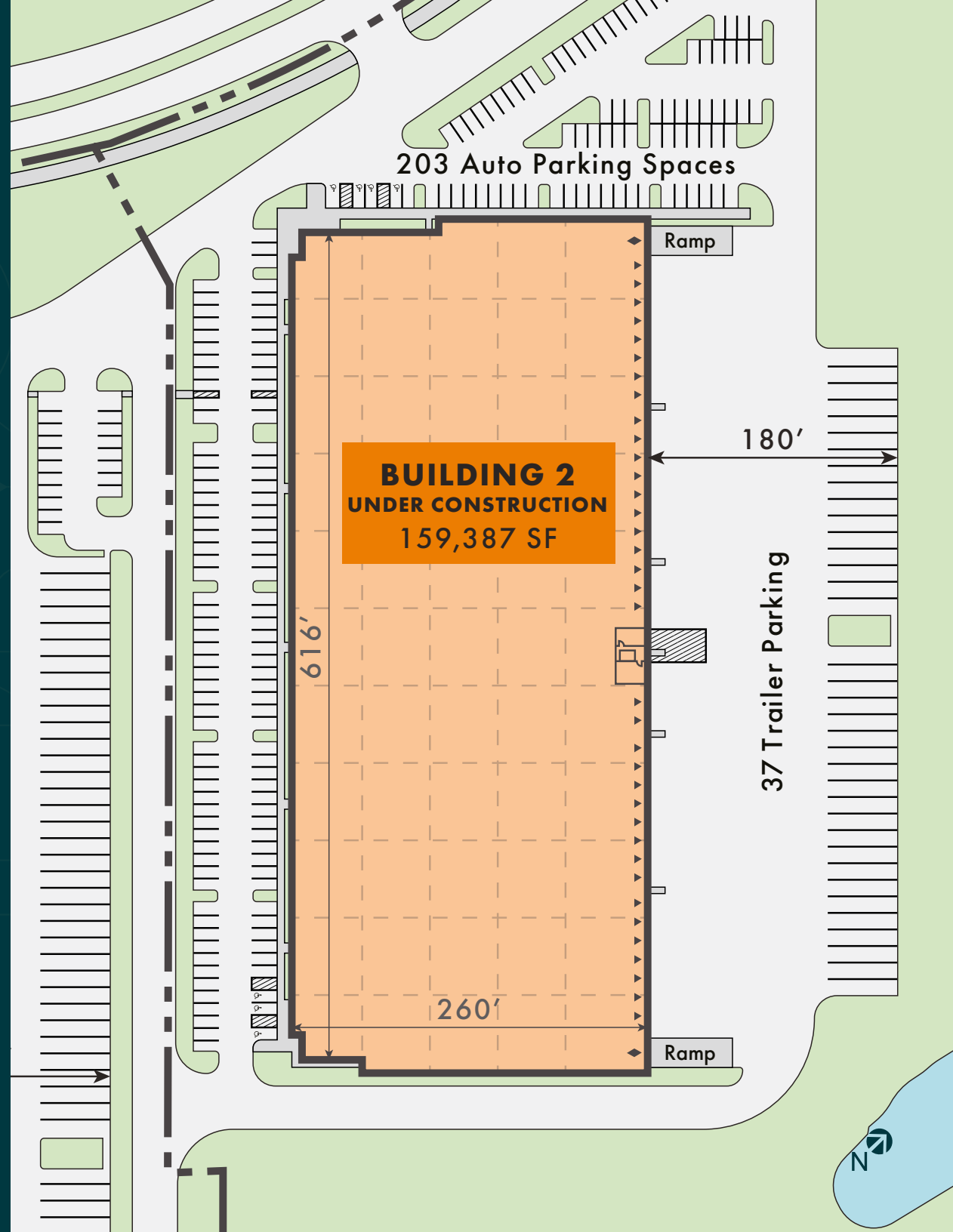
203 Auto
Parking Spaces



37 Trailer
Parking Spaces

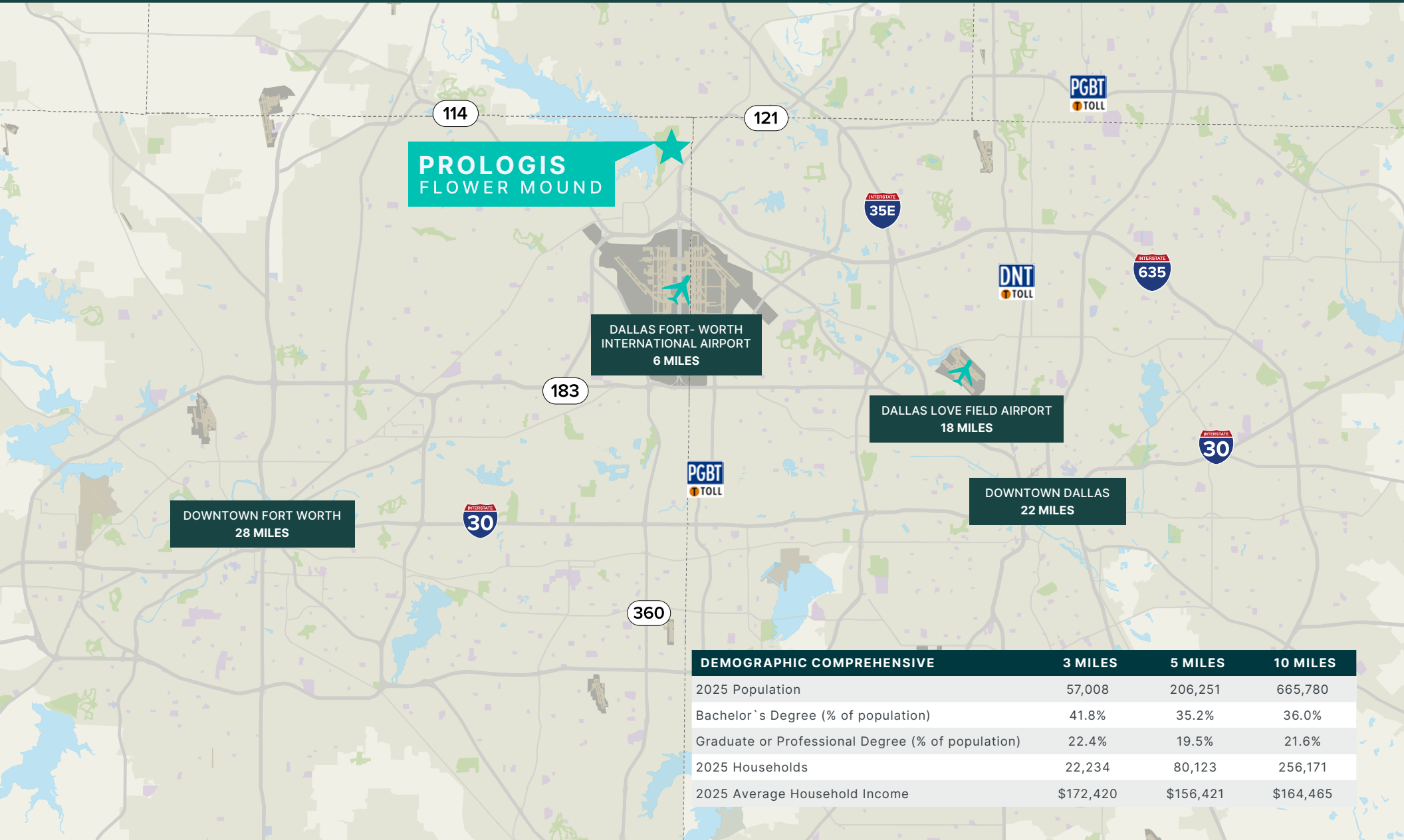


4000 Amps

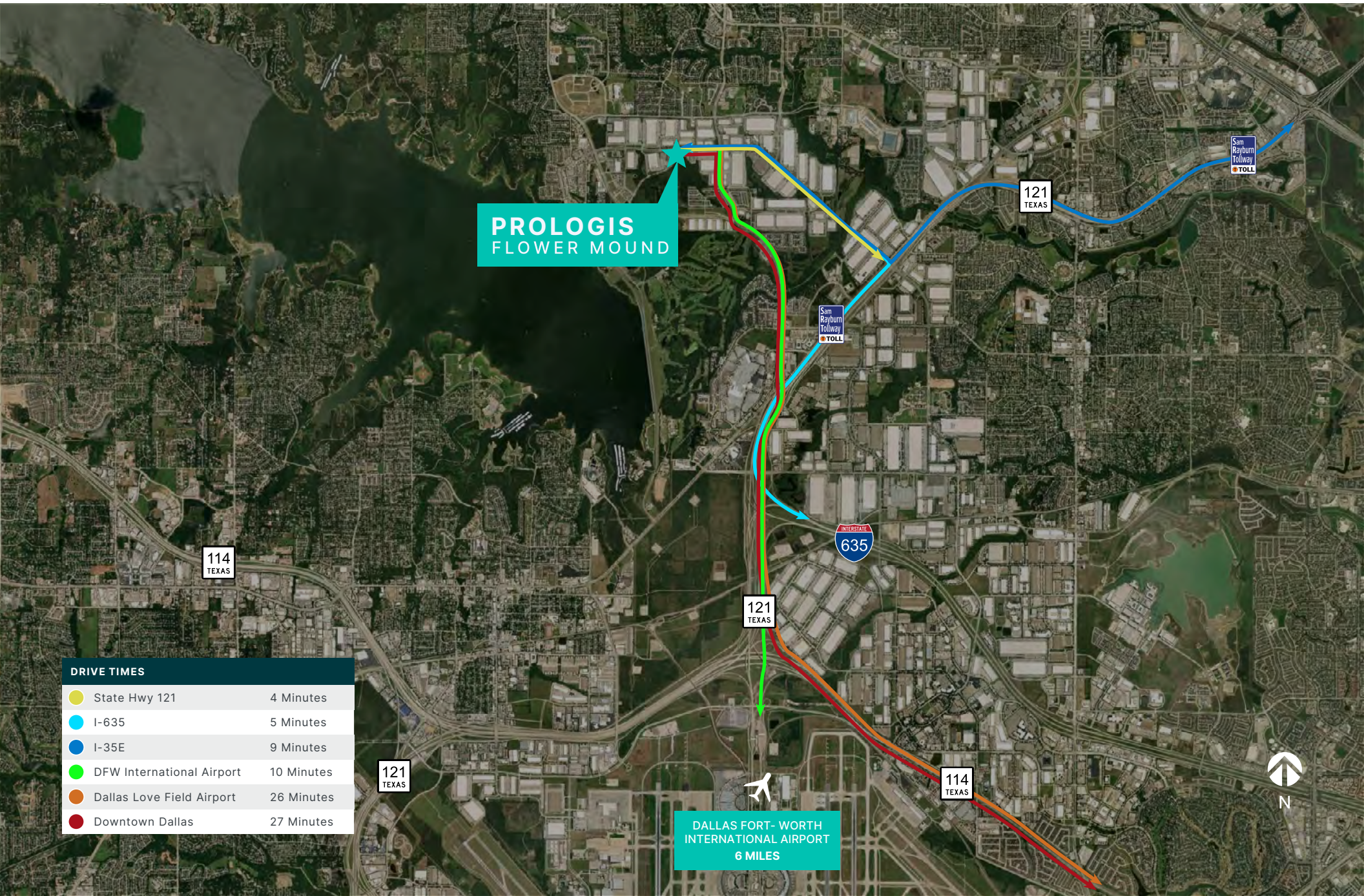


Prime Location

Prologis Flower Mound is ideally positioned within the thriving DFW industrial corridor, offering immediate access to major highways and key transportation hubs. With a readily available and expanding labor pool, tenants will be able to support efficient, seamless logistics and transportation operations.



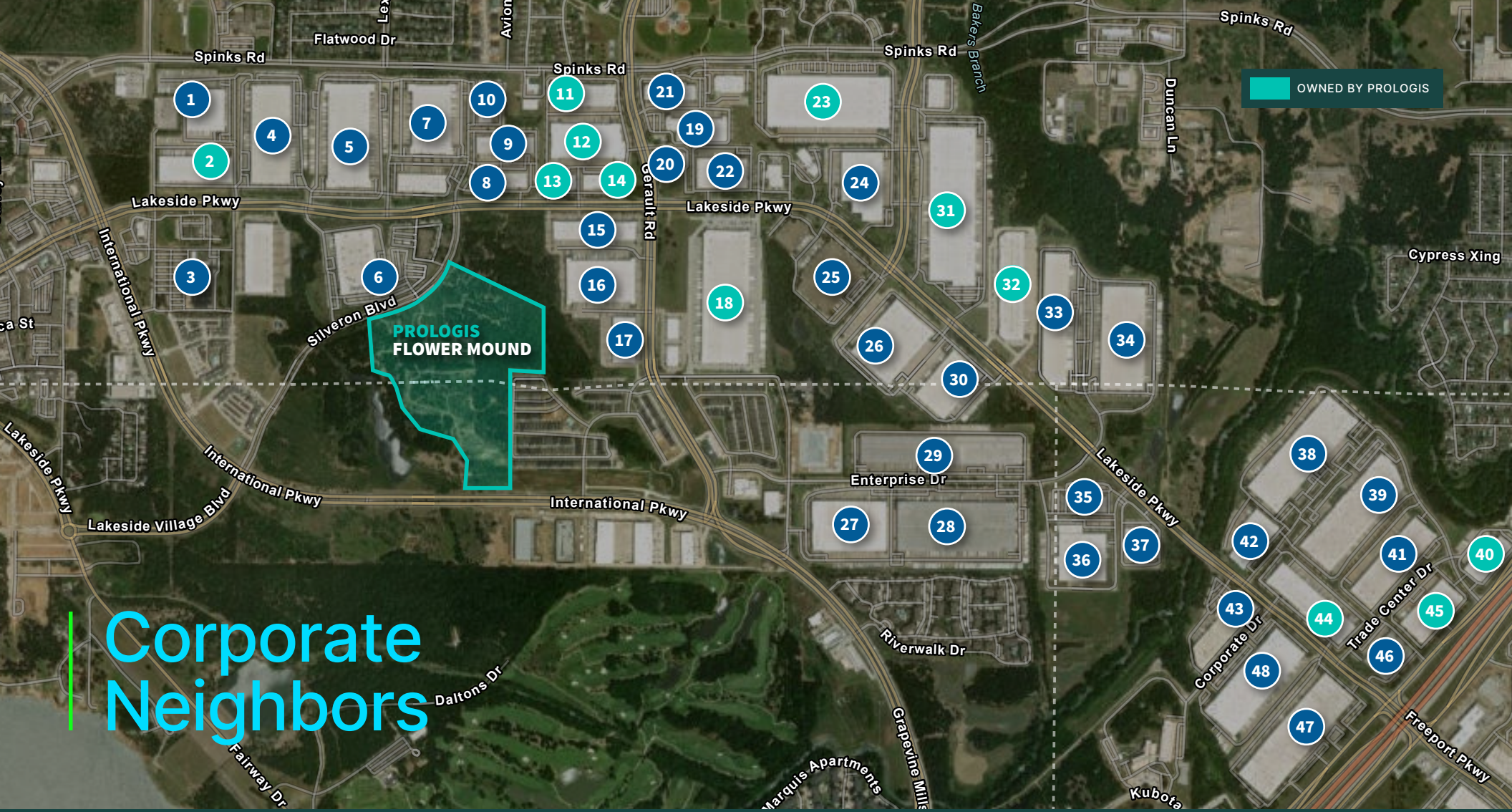
Ease Of Access



**PROLOGIS
FLOWER MOUND**

DRIVE TIMES	
State Hwy 121	4 Minutes
I-635	5 Minutes
I-35E	9 Minutes
DFW International Airport	10 Minutes
Dallas Love Field Airport	26 Minutes
Downtown Dallas	27 Minutes

**DALLAS FORT-WORTH
INTERNATIONAL AIRPORT
6 MILES**



OWNED BY PROLOGIS

**PROLOGIS
FLOWER MOUND**

Corporate Neighbors

- 1 Lisanti Food Services of Texas
- 2 MountainMovers
- 3 The Home Depot
- 4 MI Windows and Doors
- 5 WORLDPAC Inc.
- 6 Stryker (Communications)
- 7 FFF Enterprises
- 8 Haag Engineering Co
- 9 Taurus Technologies
- 10 Ceutical Laboratories Inc
- 11 Pulse Tech, LUX ICE, LLC, Polaris and Specialized Products

- 12 Veho Tech, Inc., Firstech LLC, Arbor International LLC, Renaissance Repair and Supply Inc.
- 13 ThermoTek
- 14 Amber Green Realty
- 15 Signature Systems
- 16 Hardware Resources
- 17 Bohm Technologies
- 18 Communications Test Design Inc & The Pittsburg Paints Co
- 19 National Powersport Auctions
- 20 Advantage Storage

- 21 Conti Systems, Rhenus Air and Ocean, JF Petroleum Group
- 22 Spears Manufacturing
- 23 Princess House Inc
- 24 Zenith Global Logistics
- 25 Modis
- 26 Benco Dental
- 27 Dallas DC
- 28 Best Buy Warehouse
- 29 LX Hausys America
- 30 Owens & Minor Distribution, HD Supply Facilities

- 31 HD Supply Facilities Maintenance and Owens & Minor Distribution
- 32 Likewize Corp.
- 33 SCP Distributors
- 34 Armada
- 35 Mercedes Benz Training Center
- 36 Mercedes-Benz USA LLC
- 37 TST IMPRESO
- 38 Mazda Training Facility
- 39 McKesson Medical-Surgical
- 40 AIT Worldwide Logistics and Deluxe Corporation

- 41 Kuehne + Nagel Inc.
- 42 KG1 Forged, FleetPride, Aersale
- 43 Cynergy
- 44 Rockwell Medical Technologies, Global Asset, Logoplaste Fort Worth and Earthbound Holding
- 45 Cheng Shin Rubber USA
- 46 Landsberg Orora
- 48 SMS InfoComm Corporation
- 48 Ecolab



PROLOGIS FLOWER MOUND

600 SILVERON BOULEVARD
FLOWER MOUND, TX 75028

For additional information, please contact:

STEVE TRESE

Executive Vice President
+1 214 979 6534
steve.trese@cbre.com

WILSON BROWN

Senior Vice President
+1 214 979 6582
wilson.brown@cbre.com

MITCH PRUITT

VP, Leasing Officer
+1 972 884 9221
mpruitt@prologis.com

KEESHA PARTIDA

Leasing Manager
+ 1 972 884 9224
kpartida@prologis.com

CBRE



© 2026 CBRE, Inc. All rights reserved. This information has been obtained from sources believed reliable, but has not been verified for accuracy or completeness. You should conduct a careful, independent investigation of the property and verify all information. Any reliance on this information is solely at your own risk. CBRE and the CBRE logo are service marks of CBRE, Inc. All other marks displayed on this document are the property of their respective owners. Photos herein are the property of their respective owners. Use of these images without the express written consent of the owner is prohibited.