



**2100 NW 129th Avenue
Miami, FL 33182**

22,788 SF Industrial space for lease

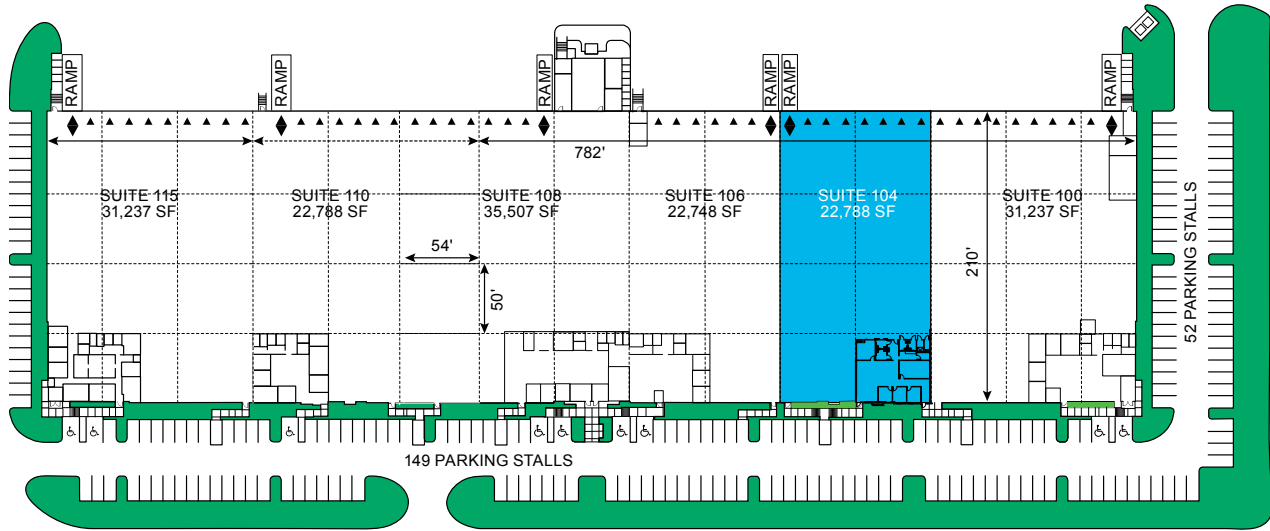
Available 8/1/2027

Building 23, Suite 104

Available SF	22,788 SF
Office SF	2,310 SF
Clear Height	30'
Column Spacing	54' x 50'
Truck Court Depth	185'
Speed Bay	50'
Dock-High Doors	7
Drive-In Doors	1
Parking Ratio	1.12 /1,000 SF
Sprinkler	ESFR
Lighting	LED motion sensor

Overall site plan

BEACON LAKES 23



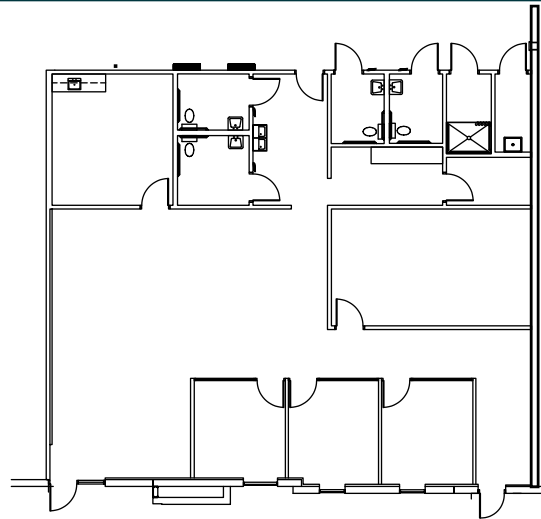
LEGEND

- ▼ Dock position
- ◆ Drive-in door
- Available
- Leased
- Land



Office plans

Suite 104
2,310 SF



Barbara Mantecon
bmantecon@prologis.com
+1 954 316 1777

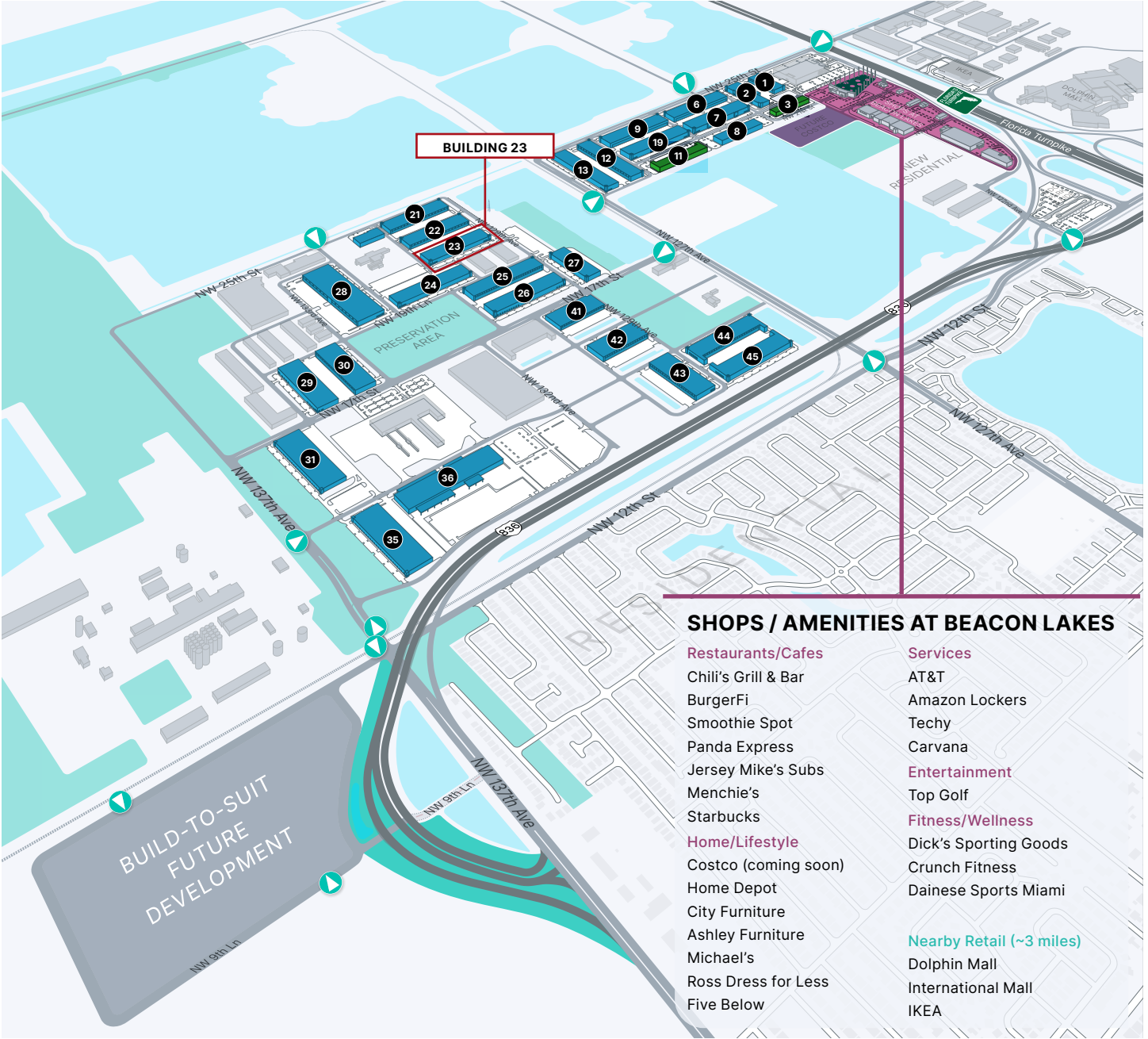


Brian Smith
smith.brian@jll.com
+1 305 960 8403

Audley Bosch
audley.bosch@jll.com
+1 305 960 8404

Ana Rivera
ana.rivera@jll.com
+1 305 960 8427

Location map
BEACON LAKES 23



SHOPS / AMENITIES AT BEACON LAKES

- Restaurants/Cafes**
 - Chili's Grill & Bar
 - BurgerFi
 - Smoothie Spot
 - Panda Express
 - Jersey Mike's Subs
 - Menchie's
 - Starbucks
- Home/Lifestyle**
 - Costco (coming soon)
 - Home Depot
 - City Furniture
 - Ashley Furniture
 - Michael's
 - Ross Dress for Less
 - Five Below
- Services**
 - AT&T
 - Amazon Lockers
 - Techy
 - Carvana
- Entertainment**
 - Top Golf
- Fitness/Wellness**
 - Dick's Sporting Goods
 - Crunch Fitness
 - Dainese Sports Miami
- Nearby Retail (~3 miles)**
 - Dolphin Mall
 - International Mall
 - IKEA



- LEGEND**
- Beacon Lakes 45
 - Existing Buildings
 - Planned Development
 - Future Build-to-Suit
 - Non-Prologis Tenants
 - ▲ Beacon Lakes Ingress/Egress
 - Shops at Beacon Lakes

