

PROLOGIS LEBANON 7

510 S Enterprise Blvd | Lebanon, IN



±382,500 SF
Available for Lease



510 S ENTERPRISE BLVD

±689,009 SF Building

±382,612 SF Available

±8,745 SF Office

36' Clear Height

50' x 40' Columns (60' speed bay)

2 Drive-in Doors (12' x 14')

40 Dock Doors (9' x 10')

Cross-dock Configuration

LED Lighting

1,600 Amps | 3-Phase

8" Unreinforced Concrete Slab

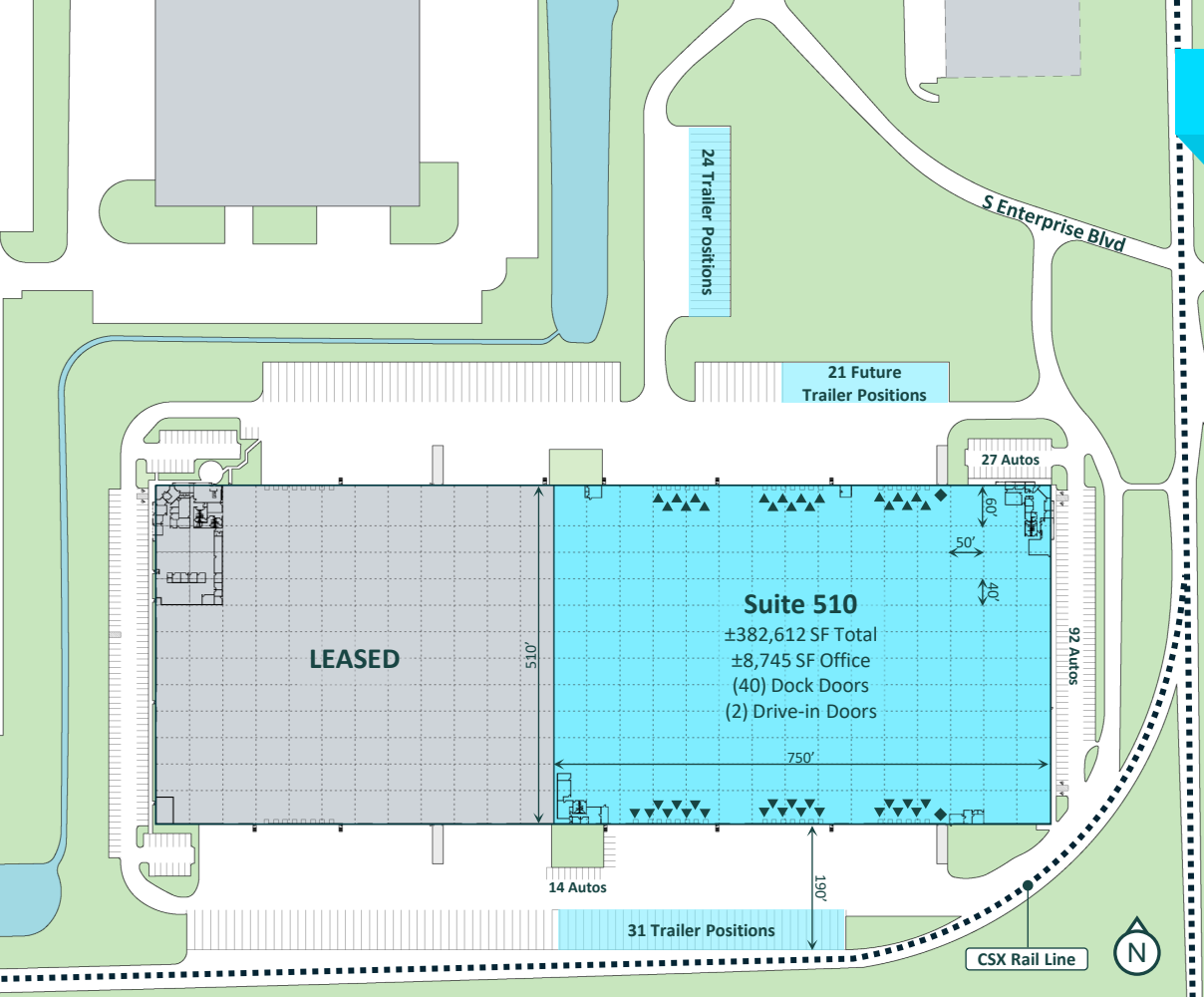
ESFR Fire Protection System

60 Trailer Parking Positions
Expandable to 81 Positions

133 Autos Parking Positions

130'–190' Truck Court

On-Site CSX Rail Potential





LEAP Lebanon
Innovation District
9,000+ Acres

 **Meta**
Hyperscale Data Center Campus
(3.7 Miles)


LEAP Campus
(5.3 Miles)

32

65
INTERSTATE

Lebanon, IN

S Enterprise Blvd

CSX Rail Line

0.9 Miles to I-65

39

LEAP District Momentum & Industrial Growth in Lebanon, IN

- Major investment from Eli Lilly (\$21B+) and Meta (\$10B+) transforming Lebanon into a premier tech and manufacturing hub
- Billions in capital and thousands of jobs driving sustained industrial demand
- Rapidly expanding supplier and logistics network supporting long-term growth in a high-demand corridor
- Immediate access to I-65 and Indianapolis providing efficient regional and national connectivity

STRATEGIC CONNECTIVITY



Indianapolis, IN
27 miles



I-65
0.9 miles

Cincinnati, OH
141 miles

SR-32
1.7 miles

Louisville, KY
143 miles

I-74
11 miles

Chicago, IL
167 miles

I-465
14.5 miles

Columbus, OH
200 miles

I-70
27 miles

St. Louis, MO
250 miles



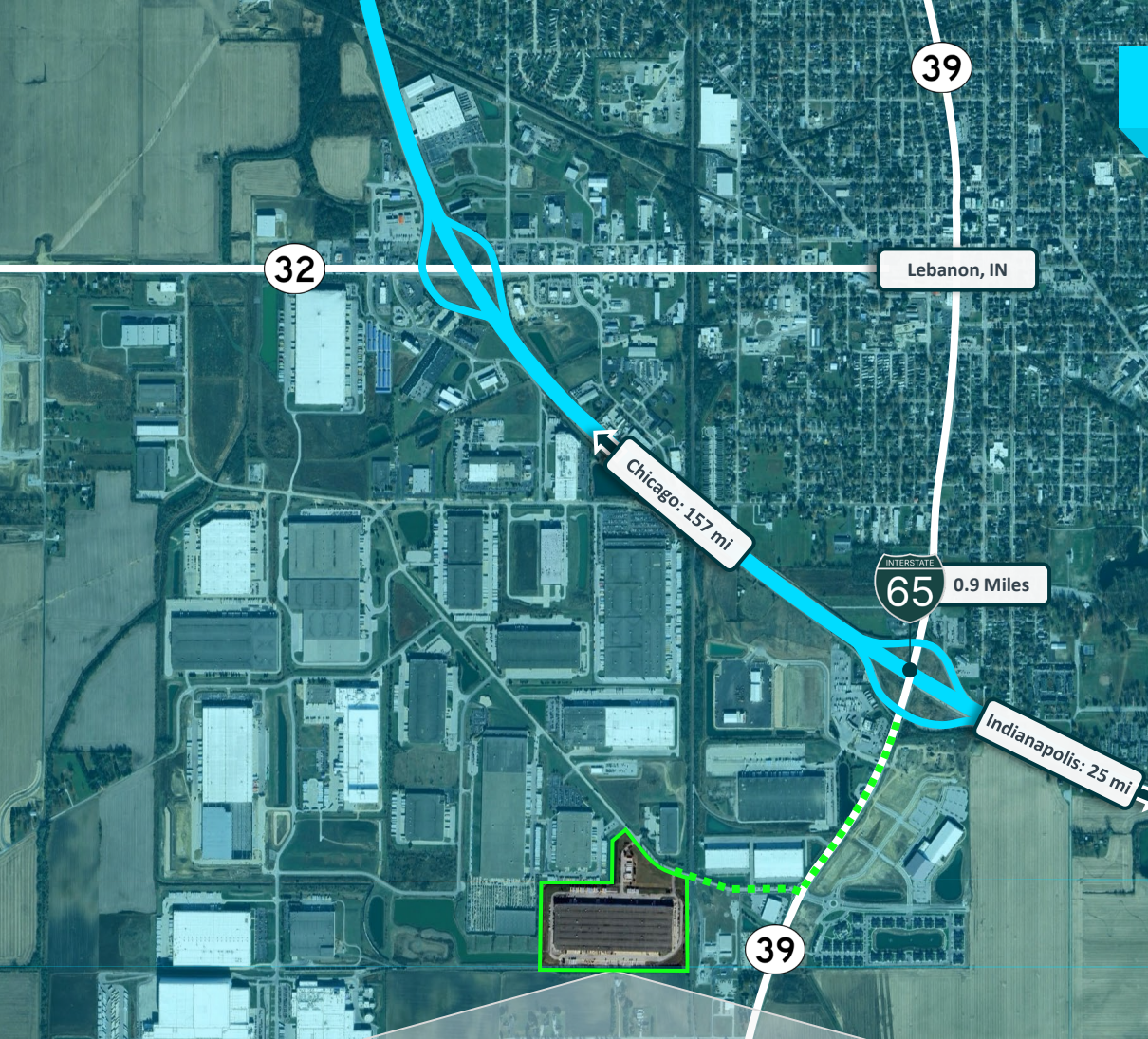
Indianapolis Intl. Airport / FedEx Hub
32 miles

Louisville Intl. Airport / UPS Worldport
147 miles

Cincinnati CVG Airport / Amazon Prime Hub
144 miles

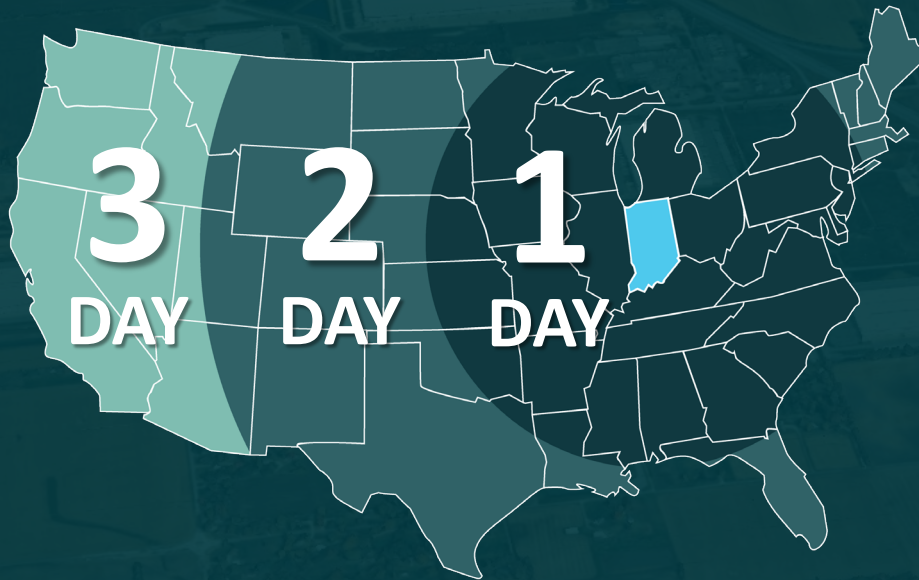
Chicago O'Hare Intl. Airport
172 miles

CSX Intermodal Terminal
24 miles



PROLOGIS LEBANON 7

Lebanon sits directly along I-65, providing efficient access to Indianapolis, Chicago, Louisville, and the broader Midwest. The market continues to attract significant investment from global leaders in advanced manufacturing and logistics, reinforcing its position as a growing supply chain hub. Ongoing infrastructure and utility investments, combined with a business-friendly environment, are supporting workforce growth and long-term industrial expansion, making Lebanon an increasingly competitive location for logistics and manufacturing users.



1st

Best state to start a business

1st

In U.S. for manufacturing output

1st

In Midwest for overall business tax climate
(Top 10 in the U.S.)

2nd

In U.S. for cost of doing business

2nd

Largest FedEx Hub & 8th largest cargo airport in the U.S.

75%

U.S. + Canada population within a 1-day drive

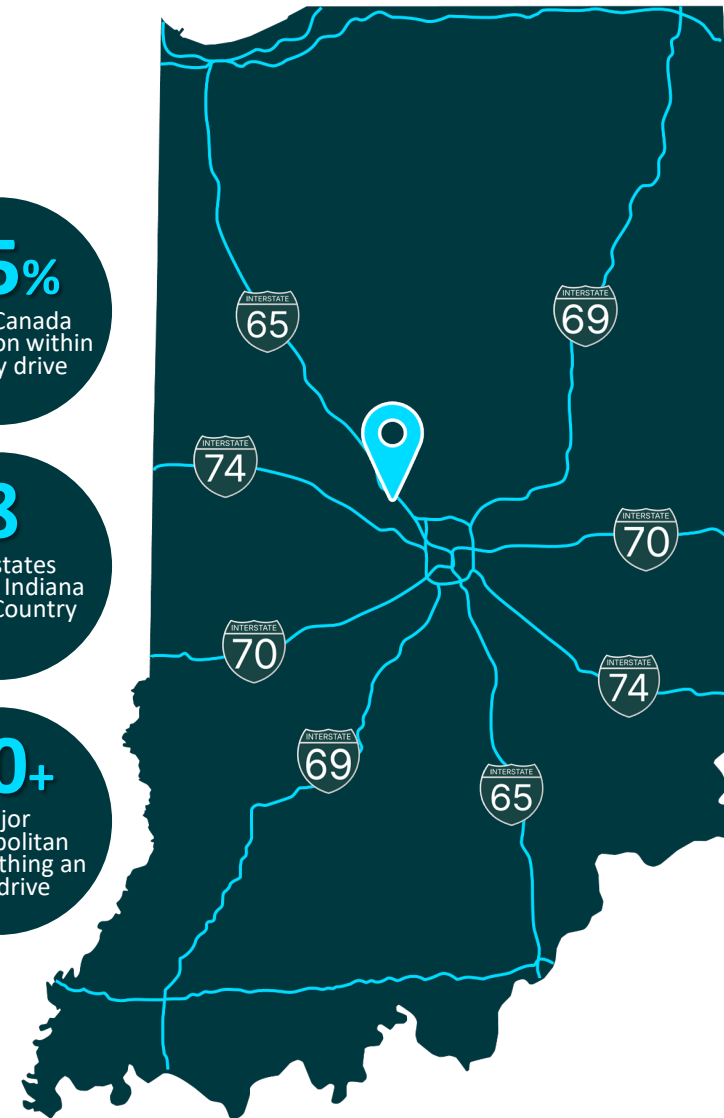
8

Interstates connect Indiana to the Country

40+

Major metropolitan areas within an 8-hr drive

THE INDIANA ADVANTAGE



Prologis Essentials

Keeping You Ahead of What's Next.

Build resilience, drive innovation and unlock growth with Prologis Essentials – your all-in-one platform for optimized operations, energy, mobility and workforce solutions. Transform today's logistics challenges into opportunities.



OPERATIONS

Prologis Essentials is the all-in-one way to help build resilience, innovation and growth into your business. Combining the right location with the right operations, energy + sustainability, mobility, and workforce solutions will help you transform today's logistics challenges into opportunities.

- Move in + setup
- Racking systems
- Forklifts & material handling equipment
- Network infrastructure & security
- Automation solutions



ENERGY + SUSTAINABILITY

Energy + sustainability tools and resources build your decarbonized business.

- Clean energy solutions
- Energy storage
- Backup power generators
- Lighting & electrical
- Energy-efficient solutions



MOBILITY

Mobility solutions to turbocharge your drive to zero emissions.

- Fleet electrification for depots & hubs
- On-demand power
- Hydrogen fueling
- Workplace charging



WORKFORCE

Unlock the potential of your workforce and enhance recruitment, retention and productivity.

- Community Workforce Initiative (CWI)
- Talent staffing & retention programs
- Training & certification

[Unlock the full potential of your warehouse with one strategic, single-source partner.](#)



PROLOGIS LEBANON 7

510 S Enterprise Blvd | Lebanon, IN

±382,612 SF

Available for Lease

Colliers

Korey Ryan, SIOR
korey.ryan@colliers.com
Mobile: +1 (765) 520-6662

Jason Speckman, SIOR
jason.speckman@colliers.com
Mobile: +1 (317) 523-6918

Cam Kucic, SIOR
cam.kucic@colliers.com
Mobile: +1 (317) 557-4013



Quentyn Carpenter
qcarpenter@prologis.com
Direct: +1 (317) 533-6027

Cody Riles
criles@prologis.com
Direct: +1 (317) 228-5202



Prologis, Inc., is the global leader in logistics real estate with a focus on high-barrier, high-growth markets. Prologis leases modern logistics facilities to a diverse base of approximately 6,500 customers principally across two major categories: business-to-business and retail/online fulfillment. Prologis owns or has investments in, on a wholly owned basis or through co-investment ventures, properties and development projects expected to total approximately 1.3 billion square feet (120 million square meters) in 20 countries, as of September 30, 2025.